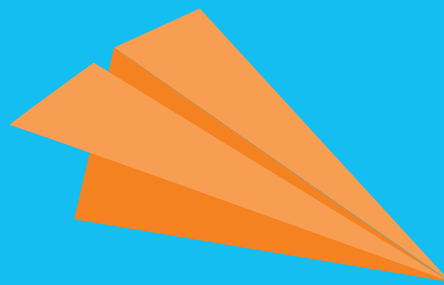


# Hutt Street Library Access Guide



CITY  
LIBRARIES

# Contents

1. Using the Hutt St Library Access Guide	3
2. Location	3
3. Opening Hours	3
4. Getting to the Hutt Street Library – Transport Options	4
4.1 Public transport	4
4.2 Parking	4
5. Getting into the Hutt Street Library	5
5.1 Community Meeting Rooms	5
5.2 Lift	5
6. Hutt Street Library Floorplan	6
7. Hutt Street Library Facilities	6
7.1 Toilets	6
7.2 Recharge Point	7
7.3 Emergency Evacuation	7
7.4 Public Use Computers and Adaptive Technology	7
7.5 Seating	7
7.6 Collection	7

# 1. Using the Hutt St Library Access Guide

The Hutt Street Library was opened in October 2003. It is a vibrant, easy to access and welcoming place where people can connect, create and be inspired. The work done by the Access and Inclusion Advisory Panel (AIAP) and library staff on the Access Guide informs this Access Guide and ensures that the library is a welcoming and inclusive place for everyone to enjoy. The AIAP is made up of 12 people with experience of disability.

While every effort has been made to provide information within the Guide on key accessibility considerations, if you would like to ask specific questions you can:

Speak to one of our staff members at the library

Give us a call on **8203 7990** or

Email us at **[library@cityofadelaide.com.au](mailto:library@cityofadelaide.com.au)**

## 2. Location

The Hutt Street Library is located at 235 Hutt Street, Adelaide. Refer to page 6 for information on getting into the building. It is accessible using public transport and the free City Connector bus service in the city. Car parks and bicycle racks are available.

## 3. Opening Hours

Monday – Friday: 10.00am – 5.00pm

Saturday: 10.00am – 2.00pm

Sunday: Closed

Public Holidays: Closed

## 4. Getting to the Hutt Street Library – Transport Options

### 4.1 Public transport

#### Bus

The following Adelaide Metro bus stops are located close to the Hutt Street Library:

**K1** and **J1** East side of Hutt Street

**Q1** West side of Hutt Street

The Adelaide Metro City map provides a quick reference to find service timetables and stops in the city: [adelaidemetro.com.au/Maps2/City](https://adelaidemetro.com.au/Maps2/City)

The Adelaide Metro accessibility guides and videos can be viewed here: [adelaidemetro.com.au/Using-Adelaide-Metro/Accessibility-Disability](https://adelaidemetro.com.au/Using-Adelaide-Metro/Accessibility-Disability)

#### Free City Connector Bus

The City Connector bus services the City and North Adelaide. The large loop (**98a** and **98c**) connects North Adelaide and the City, while the small loop (**99a** and **99c**) connects the inner city areas that are not serviced by the tram. Find out more at:

[adelaidemetro.com.au/Timetables-Maps/Special-Services/Free-City-Services](https://adelaidemetro.com.au/Timetables-Maps/Special-Services/Free-City-Services)

#### Taxi

To travel from the City to Hutt Street Library, taxi ranks are located on Pulteney Street (eastern end of Rundle Mall) and on North Terrace (near the junction of King William Street at the western end of Rundle Mall). There are no designated taxi ranks near the library. Staff members will help library patrons to call a taxi on request.

### 4.2 Parking

#### Car parks

Short term off-street parking is available on Hutt Street, South Terrace, Gilles Street and Halifax Street.

There is a disability parking space for permit holders outside the library entrance.

Details regarding City of Adelaide's on and off-street parking can be found on the City of Adelaide website: [cityofadelaide.com.au/transport-parking/parking/parking-in-the-city](https://cityofadelaide.com.au/transport-parking/parking/parking-in-the-city)

#### Electric Mobility Devices – Scooters, gophers, electric wheelchairs

Electric mobility devices may be brought into the library. Parking is available in the library near the recharge point, when it is not in use. There is no other designated parking elsewhere in the library.

## **Bike Parks**

Bike racks are located at the front of the library. Visit the City of Adelaide website for more information about cycling in the city, including security and journey planning, [cityofadelaide.com.au/transport-parking/cycling/cycling-in-the-city](https://cityofadelaide.com.au/transport-parking/cycling/cycling-in-the-city)

# **5. Getting into the Hutt Street Library**

The Hutt Street Library can be accessed via the main entrance located on Hutt Street. There are no steps leading into the library entrance. The library is located on the ground floor.

## **5.1 Community Meeting Rooms**

The Community Meeting Rooms are located on Level 1. After hours, these rooms can be accessed via a single entrance door located to the right hand side of the main entrance door. The stairway or the lift can be used to reach level 1.

## **5.2 Lift**

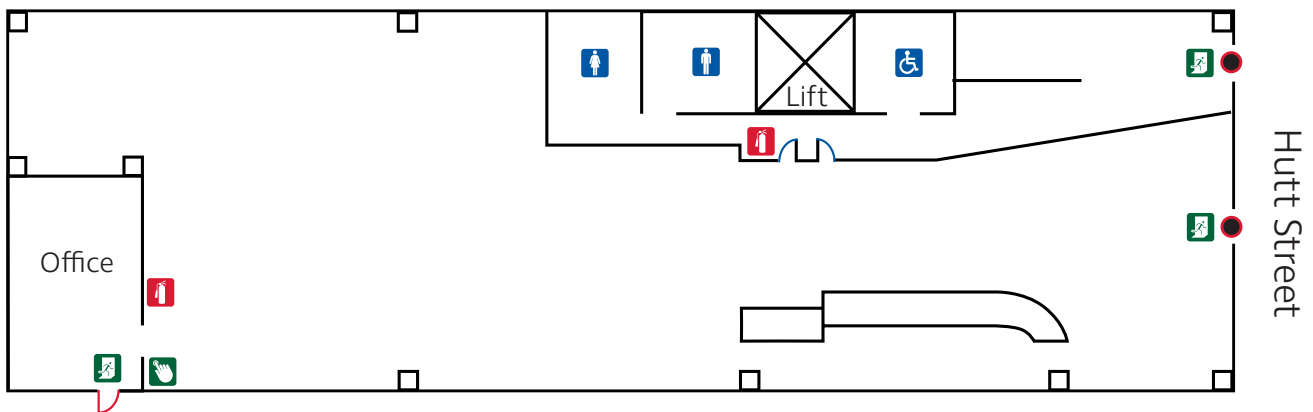
The lift has the following dimensions: 90cmW x 153cmL x 217cmH. For most electric mobility devices, this is enough room to comfortably enter and exit the lift. If you require additional information about the lift, please contact us.

## 6. Hutt Street Library Floorplan

The Hutt Street Library is located on one level. It has a variety of spaces such as quiet reading areas and flexible program spaces. The Community Meeting Rooms (Conference and Meeting) are located upstairs on level 1.

Our staff members are very approachable and will be happy to help you if you need assistance finding your way around the library. All staff members wear a bright green lanyard for ease of identification. All certified assistance dogs are welcome inside the Hutt Street Library (as advised by Guide Dog SA).

### Ground Floor



#### Key

● Entry Point

### First Floor

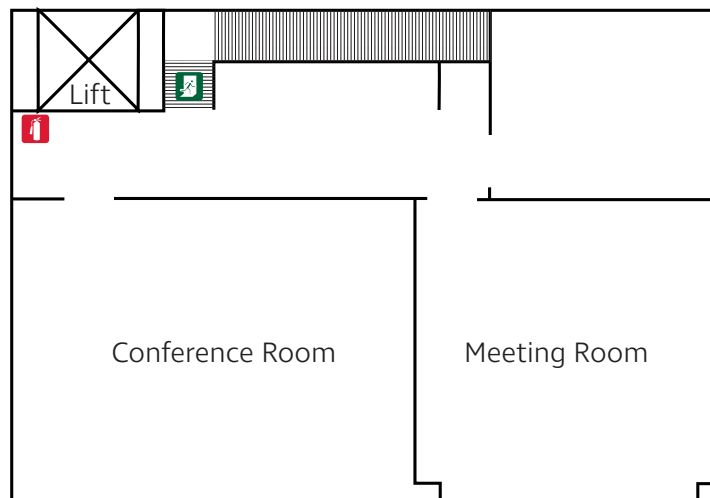


Fig. 1 – Hutt Street Library Floor Plan

## 7. Hutt Street Library Facilities

### 7.1 Toilets

Male and female toilets are located on the ground floor to the left of the lift. One accessible toilet is located to the right of the lift. Baby Change facilities are also available in this toilet.

## 7.2 Recharge Point

A free recharge point is available for electric mobility devices. The point is located near the front of the library, opposite our Public Use Computers. There are recharge stickers to identify the point on the wall, as well as on the front entrance window.

Fig. 2 – Example of a recharge sticker



## 7.3 Emergency Evacuation

Please be aware of the nearest evacuation exit and follow staff instructions and advice:

- In the event of a Fire Alarm prepare to evacuate.
- If the Evacuation Alarm is sounded, then staff will begin evacuating people and assisting those with mobility needs/requirement.

## 7.4 Public Use Computers and Adaptive Technology

One of the public use computers has an adjustable chair, as well as a modified large key and high contrast keyboard and mouse. These computers can be booked online or in person up to seven days in advance. There is also a Reader Pen available for borrowing within in the library, which can scan and convert written text to audio.

## 7.5 Seating

There are a variety of seating options in the Hutt Street Library to suit various comfort requirements and needs. This includes chairs with armrests.

## 7.6 Collection

There are a wide range of books and resources in the collection to support accessibility. This includes audio books and large print books. Please see a staff member if you would like assistance with borrowing digital audio books and e-books.

**235 Hutt Street, Adelaide**

**T 08 8203 7990**

**E [library@cityofadelaide.com.au](mailto:library@cityofadelaide.com.au)**

**[cityofadelaide.com.au/community/library-services/library-locations/hutt-street-library](http://cityofadelaide.com.au/community/library-services/library-locations/hutt-street-library)**



**CITY  
LIBRARIES**