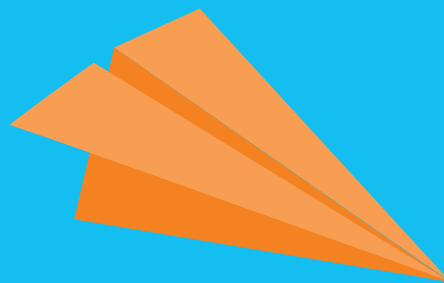


North Adelaide Library Access Guide



CITY
LIBRARIES

Contents

1. Using the North Adelaide Library Access Guide	3
2. Location	3
3. Opening Hours	3
4. Getting to the North Adelaide Library – Transport Options	4
4.1 Public transport	4
4.2 Parking	4
5. Getting into the North Adelaide Library	5
6. North Adelaide Library Floor Plan	6
7. North Adelaide Library Facilities	7
7.1 Toilets	7
7.2 Recharge Points	7
7.3 Emergency Evacuation	7
7.4 Public Use Computers and Adaptive Technology	7
7.5 Seating	7
7.6 Collection	7

1. Using the North Adelaide Library Access Guide

North Adelaide Library was opened in 1986. It is a vibrant, easy to access and welcoming place where the community can connect, create and be inspired. The work done by the Access and Inclusion Advisory Panel (AIAP) and library staff on the Access Guide informs this Access Guide, ensuring that the library is a welcoming and inclusive place for everyone to enjoy. The AIAP is made up of 12 people with experience of disability.

While every effort has been made to provide information within the Guide on key accessibility considerations, if you would like to ask specific questions you can:

- Speak to one of our staff members at the library
- Give us a call on **8203 7990** or
- Email us at **library@cityofadelaide.com.au**

2. Location

The North Adelaide Library is located at 176 Tynte Street, North Adelaide. Refer to page 5 for information on getting into the building. It is accessible using public transport and the free City Connector bus service in the city. Car parks and bicycle racks are available.

3. Opening Hours

Monday / Tuesday / Wednesday / Friday: 10.00am – 6.00pm

Thursday: 10.00am – 8.00pm

Saturday: 11.00am – 2.00pm

Sunday: Closed

Public Holidays: Closed

4. Getting to the North Adelaide Library – Transport Options

4.1 Public transport

Bus

The following Adelaide Metro bus stops are located close to the North Adelaide Library:

- **Stop 5** Jeffcott Street (on Wellington Square)
- **Stop 4** O'Connell Street (at the North Adelaide Village)

The Adelaide Metro accessibility guides and videos can be viewed here:

adelaidemetro.com.au/Using-Adelaide-Metro/Accessibility-Disability

Free City Connector Bus

The City Connector bus services the City and North Adelaide. The large loop (98a and 98c) connects North Adelaide and the City. Find out more at:

adelaidemetro.com.au/Timetables-Maps/Special-Services/Free-City-Services

Taxi

To travel from the City to North Adelaide, taxi ranks are located on Pulteney Street (eastern end of Rundle Mall) and on North Terrace (near the junction of King William Street at the western end of Rundle Mall). There are no designated taxi ranks near the library. Staff members will help library patrons to call a taxi on request.

4.2 Parking

Car parks

The North Adelaide Village Carpark offers two hours of free parking for shoppers close to lift and entry doors to the shopping centre. Access to the carpark is located at the two main entry points on Archer Street and Tynte Street. There is clear signage at the entrance and within the carpark complex detailing the new Terms & Conditions. Details are available at **northadelaidevillage.com.au**

Accessibility parking is available in North Adelaide Village Carpark and on Tynte Street there is an allocated disability parking space for permit holders outside of the library. This is located four carparks to the right of the library entrance.

Paid parking is available off Archer Street, towards Lefevre Terrace.

Details regarding City of Adelaide's on and off-street parking can be found on the City of Adelaide website: **cityofadelaide.com.au/transport-parking/parking/parking-in-the-city**

Electric Mobility Devices – Scooters, gophers, electric wheelchairs

Electric mobility devices may be brought into the library. Parking is available in the North Adelaide Community Centre near the recharge point (see page 7) when it is not in use. There is no other designated parking in the library.

Bike Parks

Bike racks are located at the front of the library. Visit the City of Adelaide website for more information about cycling in the city, including security and journey planning, cityofadelaide.com.au/transport-parking/cycling/cycling-in-the-city

Event Parking

The City of Adelaide, SA Police and the Adelaide Oval Stadium Management Authority set up temporary parking arrangements and road closures for large events at the Adelaide Oval. These events result in changes to the regular parking arrangements in North Adelaide.

For additional North Adelaide event parking information, please visit the Adelaide Oval Event Information website: cityofadelaide.com.au/transport-parking/parking/adelaide-oval-event-parking

5. Getting into the North Adelaide Library

1. The **main entrance** is located at the front of the library and can be accessed from Tynte Street using steps with handrails on one side.
2. The **side entrance** is located on the western side of the building via a laneway. Ramp access is available part-way along the laneway. A call button is available to alert staff to open the door.

6. North Adelaide Library Floor Plan

The North Adelaide Library is located on one level. It has a variety of spaces such as a Reading Room, the History Hub and a children's area. Meeting rooms, which are located on the second level, can only be accessed by two flights of stairs.

At the rear of the library is the North Adelaide Community Centre hall, where programs, events and art exhibitions are hosted. The hall can be accessed through the library during opening hours via the double doors, or from the laneway on the western side which has a ramp.

Our staff members are very approachable and will be happy to help you if you need assistance finding your way around the library and community centre. All staff wear a bright green lanyard for ease of identification. All certified assistance dogs are welcome inside the North Adelaide Library (as advised by Guide Dog SA).

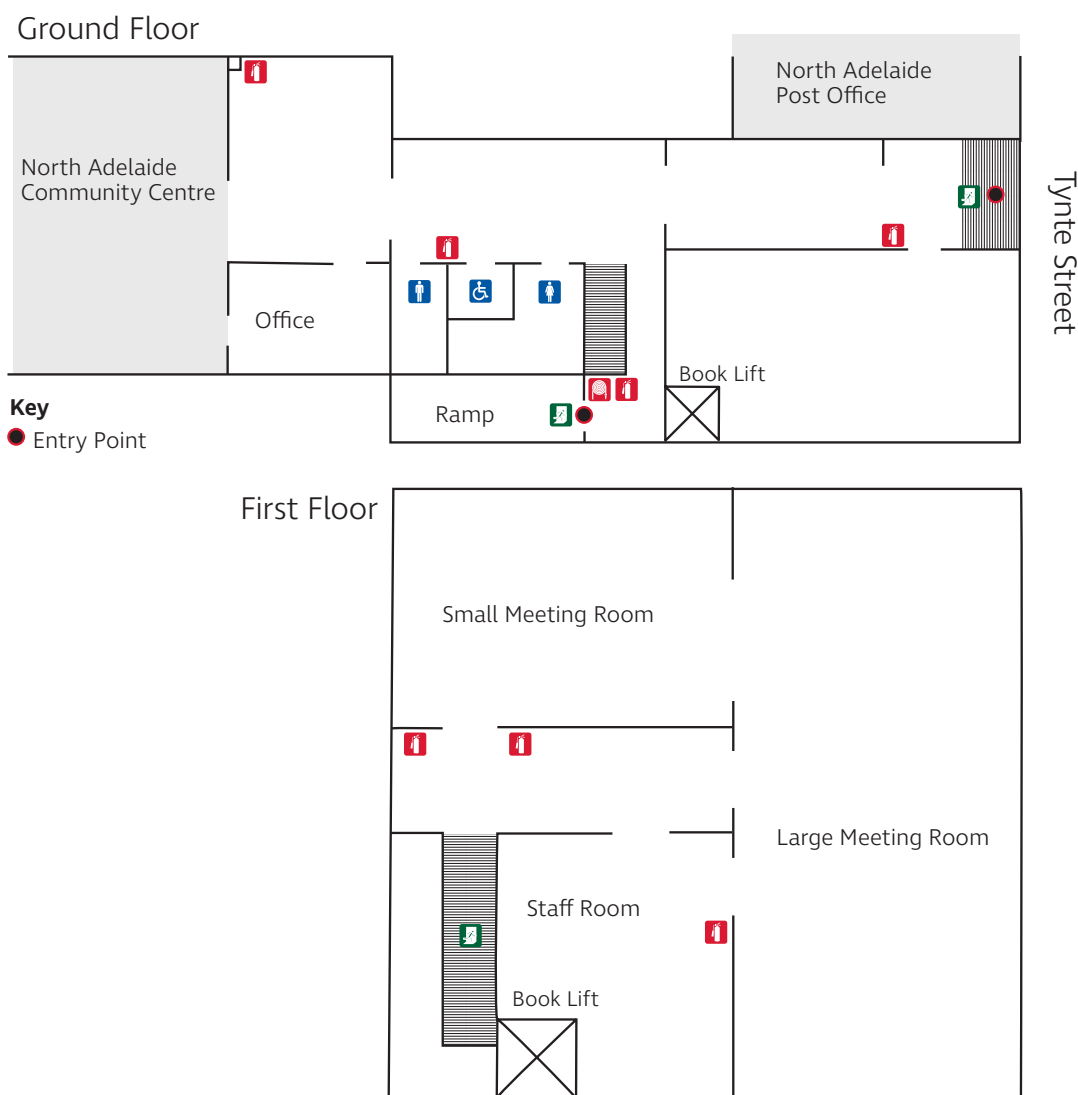


Fig. 1 – North Adelaide Library Floor plan

7. North Adelaide Library Facilities

7.1 Toilets

The toilets are located on the western side of the library, in the central area. One accessible toilet is available which also contains a fold-down baby change facility.

7.2 Recharge Points

A free recharge point is available for electric mobility devices. The point is located on the southwest corner of the community centre. There is a recharge sticker to identify the point on the wall.



7.3 Emergency Evacuation

Please be aware of the nearest evacuation exit and follow staff instructions and advice:

- In the event of a Fire Alarm prepare to evacuate.
- If the Evacuation Alarm is sounded, then staff will begin evacuating people and assisting those with mobility equipment/needs.

7.4 Public Use Computers and Adaptive Technology

One of the public-use computers has a modified large key and high-contrast keyboard and mouse. These computers can be booked online or in person up to seven days in advance. There is also a Reader Pen available for borrowing within in the library, which can scan and convert written text to audio.

7.5 Seating

There are a variety of seating options in the North Adelaide Library to suit various comfort requirements and needs. This includes chairs with armrests.

7.6 Collection

There are a wide range of books and resources in the collection to support accessibility. This includes audio books and large print books. Please see a staff member if you would like help with borrowing digital audio books and e-books.

176 Tynte Street, North Adelaide

T 08 8203 7990

E library@cityofadelaide.com.au

[cityofadelaide.com.au/community/library-services/
library-locations/north-adelaide-library/](http://cityofadelaide.com.au/community/library-services/library-locations/north-adelaide-library/)



CITY
LIBRARIES