

North Adelaide Community Centre

Accessible features include ramp, parking, toilets, drop off point, quiet areas (Hall only), and accessible seating space.

Hall*

Maximum Capacity: 150 people cocktail or theatre style, 100 cabaret style.

Area: 120m²

The hall has a stage, contains art gallery space and by negotiation, may include a kitchen suitable for receiving catered food. Shared access, adjacent to the kitchen and meeting room. Access toilet and ramp into the building.

Back Meeting Room (downstairs)*

Maximum Capacity: 20 people boardroom or theatre style.

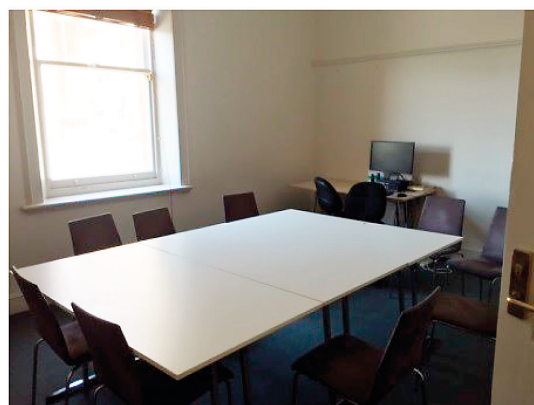
A meeting room with a projector screen and TV. Shared access to the adjacent kitchen and toilets. Not private.



Small Meeting Room (upstairs)

Maximum Capacity: 8–10 people seated.

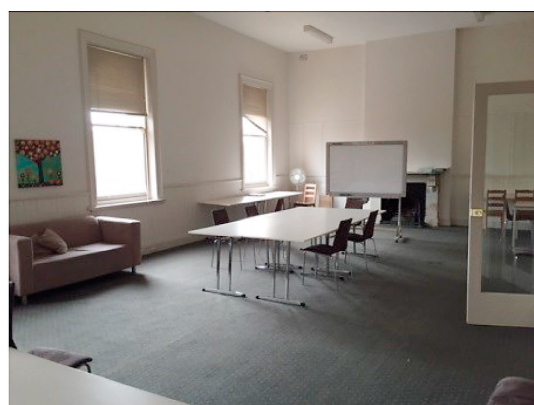
Private space. Stair access only. Not available for hire outside of office hours.



Large Meeting Room (upstairs)

Maximum Capacity: 25 people seated.

May be used for meetings or general use. Private space. Contains art gallery space. Stair access only. Not available for hire outside of office hours.



***Kitchen:** By negotiation, available to hall or hall meeting room hirers. Suitable for receiving food and washing dishes. Dishwasher, sink, domestic oven and pie warmer. Crockery and cutlery for 80 people

COMMUNITY CENTRE SPACES

South West Community Centre

Open Space

Maximum Capacity: 50–60 people.

The facilities include a Gallery and Loft which have been fully renovated. A full accessible kitchen, tables and chairs, integrated audio-visual equipment including overhead projector, accessible toilets, two exhibition spaces, it is fully air conditioned with a lift to reach the loft.



Box Factory Community Centre

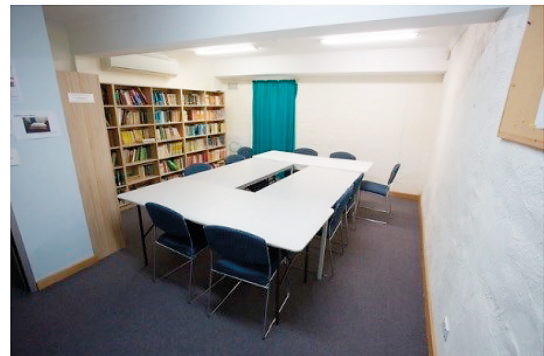
All our rooms contain tables, chairs, have air conditioning and most are carpeted.

Rooms are accessible for people with a disability with a lift and accessible toilets on both of our two storeys. Ramps, wheelchair access, drop off point out the front of the building (10 minute loading zone), accessible toilets and a lift access to Regent and Hurtle room upstairs.

Carrington Room

Maximum Capacity: 14 people seated theatre style.

Carrington acts as an intimate discussion space.



Halifax Room

Maximum Capacity: 14 people classroom style, 16–18 people theatre style.

The Halifax is set up classroom style.



Regent Room

Maximum Capacity: 90 people seated theatre style, 120 cocktail style.

This is a large meeting/activity room – contains art gallery space and stairs leading to an outside courtyard.



McLaren Room

Maximum Capacity: 20–25 people seated theatre style.

A medium sized general use/meeting room off the foyer. Contains our three public access computers that anyone with a City of Adelaide library card can use during our opening hours. Not private Monday to Friday.



Hurtle Room

Maximum Capacity: 40 people cocktail style, 15 people seated at tables.

A large fully equipped kitchen and open plan dining space with picture windows.

