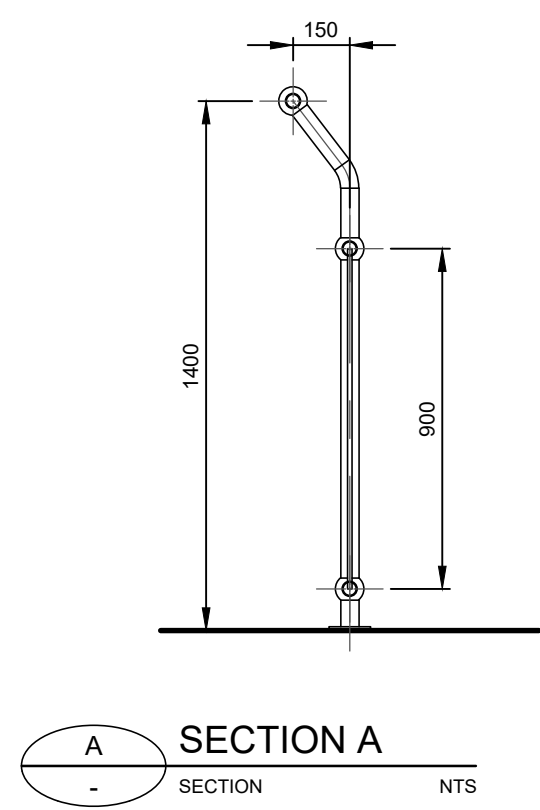
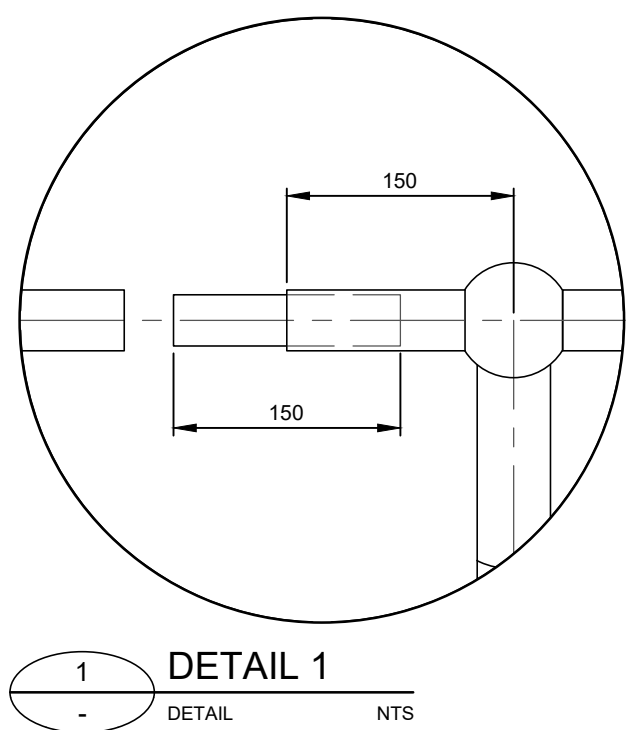


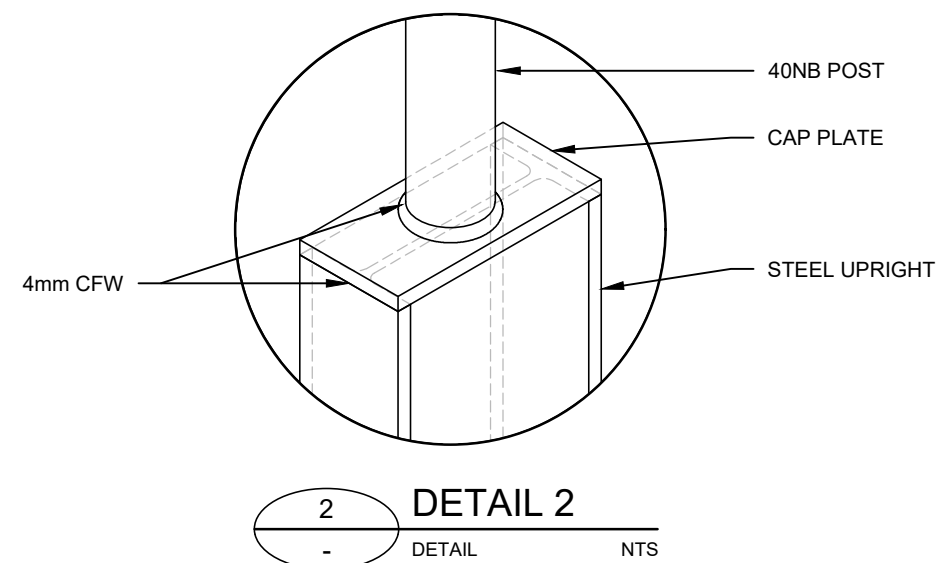
FULL BARRIER ELEVATION
NTS



SECTION A
SECTION NTS



DETAIL 1
DETAIL NTS



DETAIL 2
DETAIL NTS

NOTES:

1. POSTS TO BE 40NB (Ø48.3 OD, 3.2 THICK) STEEL TUBE.
2. RAILS TO BE:
 - 2.1. TOP RAIL- 32NB (Ø42.4 OD, 3.2 THICK) STEEL TUBE.
 - 2.2. MIDDLE RAIL- 32NB (Ø42.4 OD, 3.2 THICK) STEEL TUBE.
 - 2.3. BOTTOM RAIL- 25NB (Ø33.7 OD, 3.2 THICK) STEEL TUBE.
3. ALL HORIZONTAL RAILS TO BE ROLLED TO MATCH SHAPE OF PATH IF RADIUS IS LESS THAN 20m.
4. MINIMUM LENGTH OF RAILS TO BE 2 SPANS LONG TO MINIMISE NEED FOR JOINTS AT EVERY POST.
5. ALL WELDS TO BE 4mm CFW (CONTINUOUS FILLET WELDS) TO AS1554.1.
6. PREFERRED COLD GALVANISING TREATMENT FOR IN-SITU WELDS, CUT ENDS OR OTHER BARE STEEL TO BE IN ACCORDANCE WITH ASD4680 CLAUSE 8 REPAIR PROCEDURE.
7. ANY TUBULAR RAILS TO BE USED ONLY IN SITUATIONS CLEAR OF LONGITUDINAL VEHICLE IMPACT SO AS NOT TO BE A POTENTIAL SPEARING HAZARD TO MOTORISTS.
8. THESE FENCES ARE INTENDED AS A PEDESTRIAN/CYCLING BARRIER AND ARE NOT TO BE USED IN SITUATIONS WHERE MOTOR VEHICLE REQUIRE RESTRAINT.
9. ALL DIMENSIONS ARE IN MILLIMETRES (U.N.O.)
10. FENCE DETAILS ARE INDICATIVE ONLY TO BE AS PER WEBFORGE OR SIMILAR APPROVED
11. COLOUR AS DIRECTED BY CoA REPRESENTATIVE

CoA 692 FULL BARRIER FENCE

REV	DESCRIPTION	DATE	CONSTRUCTION STANDARD		 CITY OF ADELAIDE
A	ORIGINAL ISSUE	04/23			
			LANDSCAPE		
FULL BARRIER FENCE (WALKING & CYCLING)			SHEET NUMBER		REVISION
			LS092		A