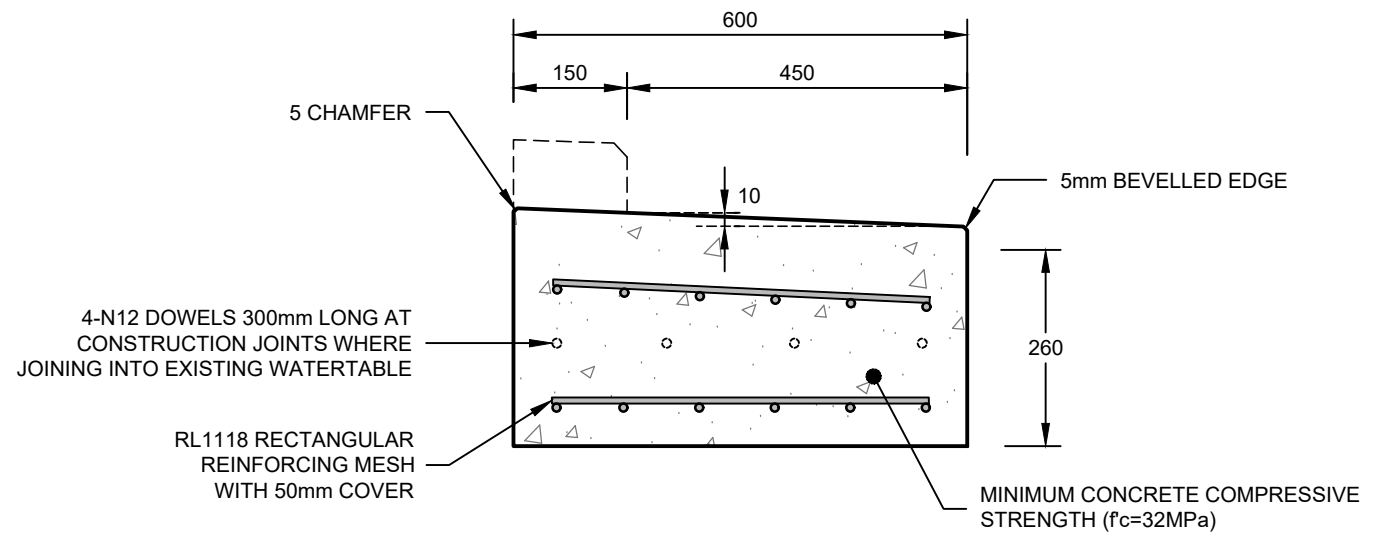


CoA 172 **DRIVEWAY CROSSOVER - OUTFALL TRAY - STANDARD**
SCALE 1:10 @ A3

APPLICATION:
MINOR STREETS WITH LOW TRAFFIC VOLUMES



CoA 173 **DRIVEWAY CROSSOVER - OUTFALL TRAY - HEAVY DUTY**
SCALE 1:10 @ A3

APPLICATION:
HEAVY DUTY OR BUS ROUTES

GENERAL NOTES:

1. THIS KERB PROFILE IS TO BE USED FOR MINOR STREETS WITH LOW TRAFFIC VOLUMES.
2. THIS KERB PROFILE IS NOT TO BE USED AT BUS STOP LOCATIONS.
3. CONCRETE STRENGTH TO BE 32MPa UNLESS NOTED OTHERWISE.
4. ALL CONCRETE TO BE WATER CURED CONTINUOUSLY FOR 3 DAYS OR ALTERNATIVELY COATED WITH AN APPROVED CURING COMPOUND.
5. CONCRETE KERBING SHALL BE CONSTRUCTED IN ACCORDANCE WITH AS2876, UNLESS NOTED OTHERWISE.
6. SHRINKAGE CONTROL TOOLED JOINTS SHALL BE CONSTRUCTED IN ACCORDANCE WITH AS2876 AT SPACINGS OF 2.5m - 3.0m.
7. FINISH: STEEL TROWEL.
8. FOR INSTALLATION REQUIREMENTS REFER TO CoA 900 / CoA 901.
9. EXPANSION JOINTS (EJ) TO BE CONSTRUCTED AT 15m INTERVALS WITH 10x10mm HIGH PERFORMANCE SILYL MODIFIED POLYMER SEALANT OVER RIGID FOAM FILLER STRIP - FULL DEPTH OF KERB & WATERTABLE SECTION. ALLOW FOR 4-N12 HDG STEEL DOWEL, 400 LONG, WITH MATCHING DOWEL SLEEVES.
10. COLOUR OF KERB TO MATCH ADJACENT KERB (STANDARD GREY, BRIGHTON LITE OR CHARCOAL GREY).

REV	DESCRIPTION	DATE	<div>CONSTRUCTION STANDARD</div> <div>CONCRETE KERBS</div> <div>DRIVEWAY CROSSOVER - OUTFALL TRAY</div>		<div><div></div><div>CITY OF ADELAIDE</div></div> <div><div>SHEET NUMBER</div><div>CK071</div></div> <div><div>REVISION</div><div>B</div></div>
A	ORIGINAL ISSUE	03/23			
B	5mm BEVELLED EDGE	03/23			