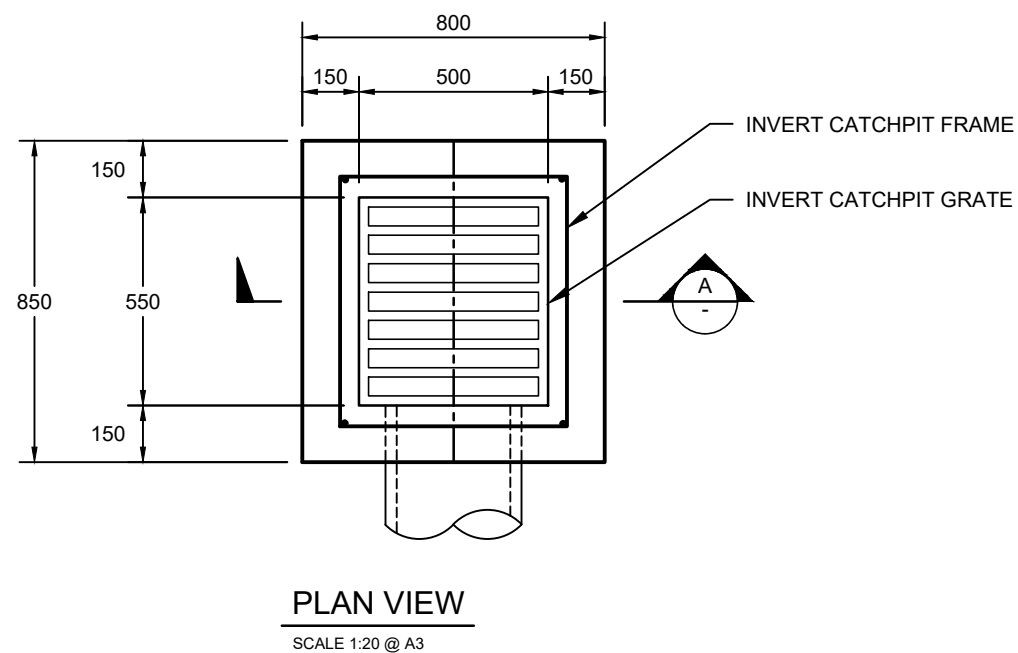


DEPTH	REINFORCEMENT
00 - 1000	SL72
1001 - 1300	SL82
1301 - 1600	SL92
1601 - 1900	SL102
>1900	DESIGN




NOTES:

1. MINIMUM CONCRETE COMPRESSIVE STRENGTH ( $f_c=32\text{MPa}$ ).
2. REINFORCEMENT MESH TO BE PLACED CENTRALLY WITH MIN 50mm COVER (TYP).
3. ALL TRAFFICABLE SURFACE COVERS SHALL BE CLASS 'D' AS PER AS3996:2019.

CoA 301

CATCH PIT - INVERT DRAIN

REV	DESCRIPTION	DATE	CONSTRUCTION STANDARD DRAINAGE		 CITY OF ADELAIDE
A	ORIGINAL ISSUE	02/23			
			CATCH PIT - INVERT DRAIN		SHEET NUMBER DR002
					REVISION A