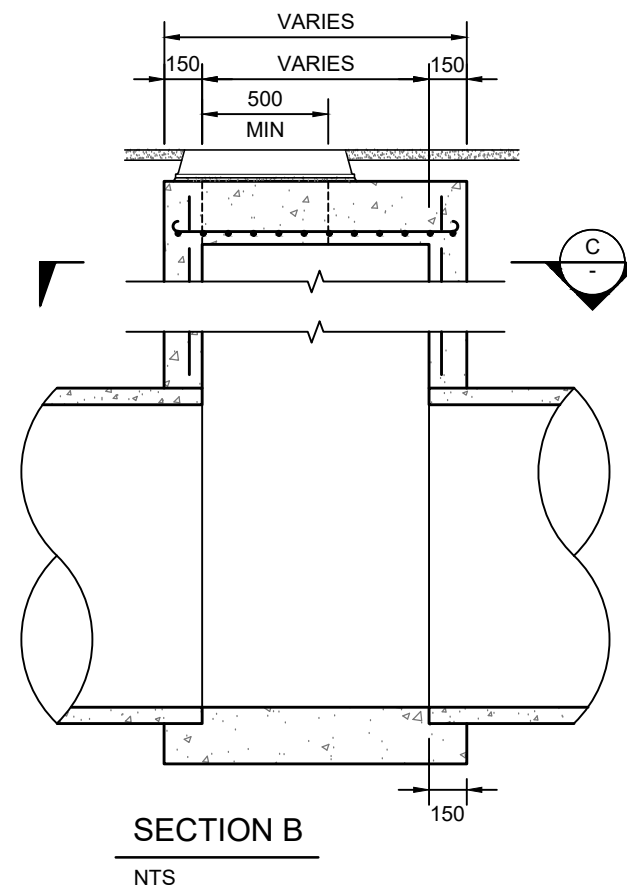
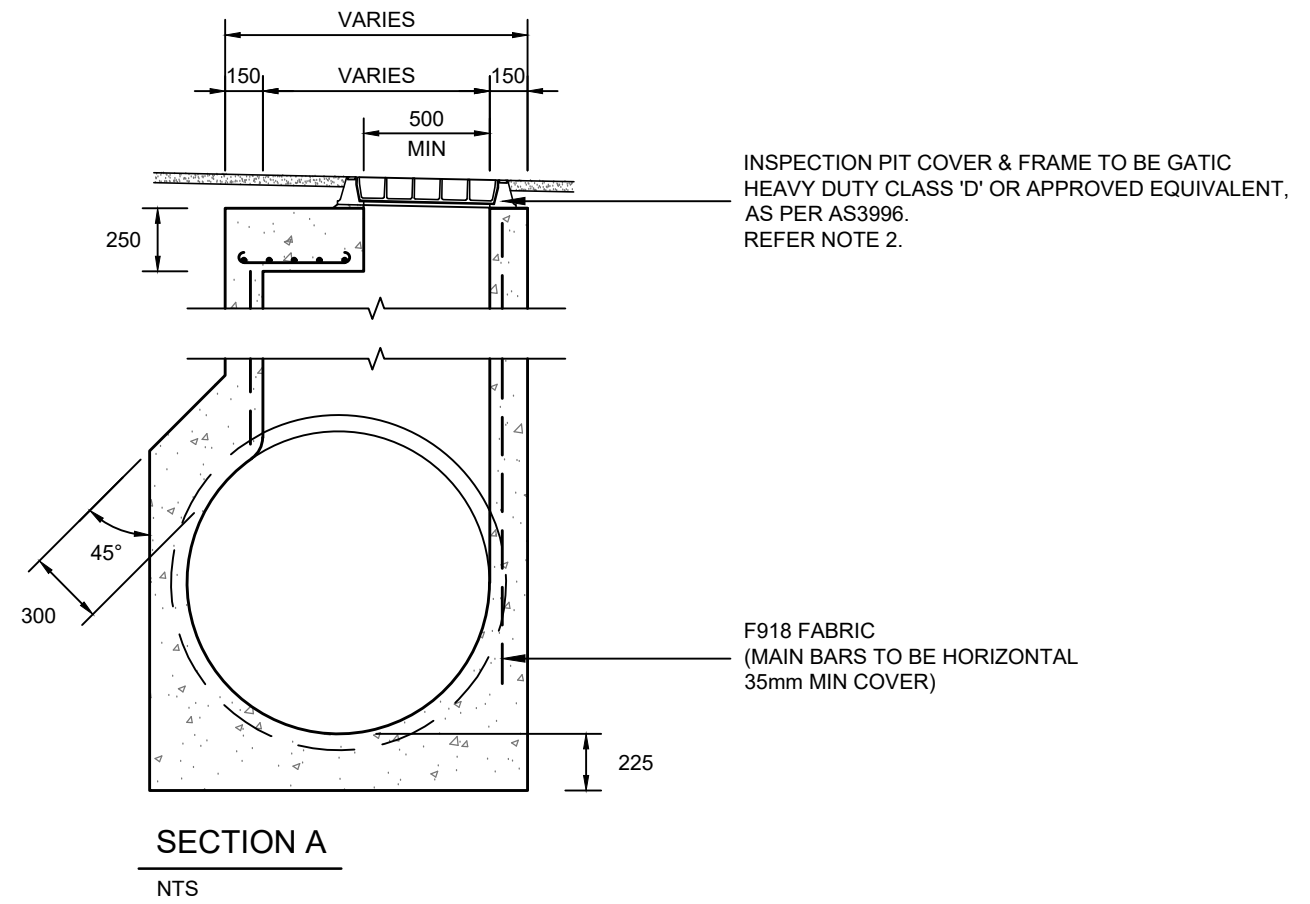


CoA 317 MANHOLE FOR PIPES > Ø900mm



NOTES:

1. MINIMUM CONCRETE COMPRESSIVE STRENGTH ($f_c=32\text{MPa}$).
2. ALL TRAFFICABLE SURFACE COVERS SHALL BE CLASS 'D' AS PER AS3996:2019.

REV	DESCRIPTION	DATE
A	ORIGINAL ISSUE	02/23

**CONSTRUCTION STANDARD
DRAINAGE**

MANHOLE FOR PIPES > 900mmØ



SHEET NUMBER DR018	REVISION A
------------------------------	----------------------