

GENERAL NOTES:

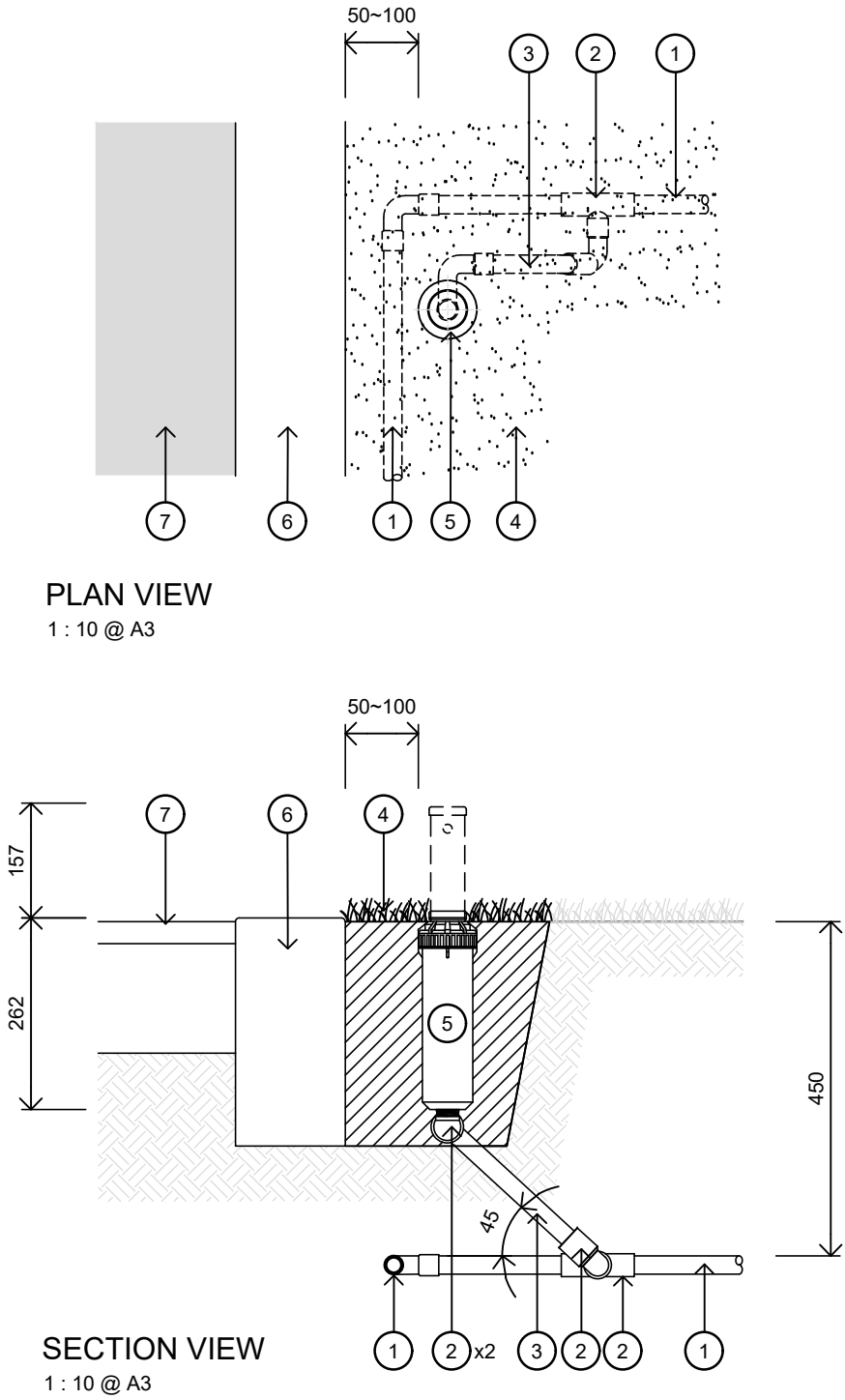
- ALL SPRINKLERS SHALL BE INSTALLED TO THE MANUFACTURER'S SPECIFICATIONS
- EACH SPRINKLER TO BE CONNECTED TO LATERAL PIPE USING 300mm ARTICULATED RISER. THREAD SIZE TO BE 25mm BSP, OR AS PER INLET THREAD SIZE OF SPRINKLER.
- THE CONTRACTOR SHALL CAREFULLY STUDY AND COMPARE ALL DRAWINGS, SPECIFICATIONS AND OTHER INSTRUCTIONS. CONTRACTOR TO NOTIFY IN WRITING THE CITY OF ADELAIDE OF ANY DISCREPANCIES BETWEEN THE PROJECT DRAWINGS AND STANDARD DETAILS FOR CLARIFICATION PRIOR TO UNDERTAKING THE WORKS.

APPLICATION:

- PARK LANDS AND SQUARES WHERE SPECIFIED

KEYNOTE LEGEND

- 1. 25mm PVC (CLASS 9) LATERAL PIPE
- 2. 25mm PVC TEE OR ELBOW CONNECTION FITTING (CLASS 18)
- 3. 25mm PRE-FABRICATED SWING JOINT - 300mm LONG
- 4. RE-LAID EXISTING SOD-CUT TURF
- 5. RAINBIRD 8005 PLASTIC TURRET WITH LILAC CAP - ADJUSTABLE ROTOR POP-UP SPRINKLER WITH 25mm BSP FEMALE THREAD
- 6. CONCRETE EDGING OR PATH
- 7. FOOTPATH WEARING COURSE



**CoA 627** SPRINKLER HEAD ASSEMBLY - TYPE 1

REV	DESCRIPTION	DATE	<div>CONSTRUCTION STANDARDS</div> <div>LANDSCAPE</div> <div>IRRIGATION</div> <div>SPRINKLER HEAD ASSEMBLY TYPE 1</div>		<div><div><div></div></div><div>CITY OF ADELAIDE</div></div>	
A	ORIGINAL ISSUE	07/22				
					SHEET NUMBER	REVISION
					<div>LS028</div>	<div>A</div>