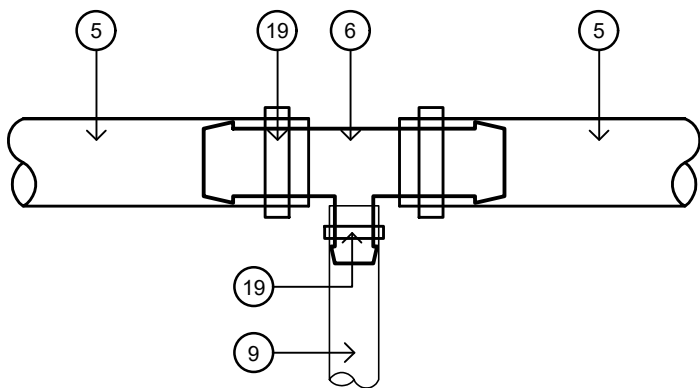
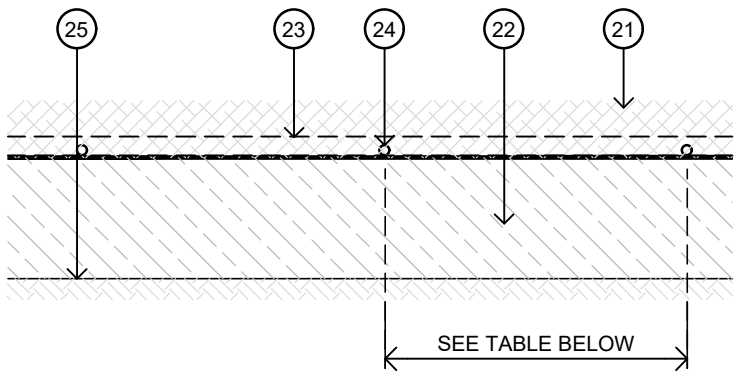


PLAN VIEW
1 : 20 @ A3



DETAIL 'A'
1 : 2 @ A3



SECTION VIEW TYPICAL DRIP IRRIGATION
1 : 10 @ A3

SOIL TYPE	LATERAL SPACING	EMITTER SPACING	FLOW RATE
CLAY	0.5M	0.5M	1.6L/HR
LOAM	0.4M	0.4M	1.6L/HR
SANDY	0.3M	0.3M	1.6L/HR

LATERAL & EMITTER SPACING TABLE

GENERAL NOTES:

- ALL TECH LINES SHALL BE INSTALLED TO THE MANUFACTURER'S SPECIFICATIONS
- REFER TO MANUFACTURER'S RECOMMENDATIONS REGARDING DRIPLINE LAYOUT WHEN SITE EXHIBITS A SLOPE GREATER THAN 3%.
- ALL DRIP IRRIGATION SYSTEMS TO EXHIBIT A FLUSHING VALVE AT LOW POINT AND AIR RELIEF VALVE AT HIGH POINT UNLESS INDICATED OTHERWISE ON THE PROJECT DRAWINGS.
- IF A TREE IS PLACED WITHIN A GARDEN BED, THE IRRIGATION TO BE ALLOCATED TO A SEPARATE VALVE ASSEMBLY. GARDEN BED VALVES ARE NOT TO IRRIGATE TREES UNLESS ADVISED OTHERWISE BY COA IRRIGATION TECHNICAL OFFICER.
- HEADER & FLUSH PIPEWORK CAN EITHER BY PVC OR LDPE MATERIAL.
- ALL JOINS TO BE CLIPPED WITH STAINLESS STEEL 'COBRA' TYPE FITTINGS TO BARBED END FITTINGS.
- LDPE SHALL CONFORM TO AS2698
- 13, 19, 25 AND 32mmPIPE SIZES ONLY TO BE USED.
- ALL GARDEN BED TECH LINES TO BE LAID ALONG FINISH SURFACE LEVEL WITH 75mm THICK MULCH OVER AND PINNED AT 3m SPACINGS WITH 150mm GALVANISED U-PINS
- THE CONTRACTOR SHALL CAREFULLY STUDY AND COMPARE ALL DRAWINGS, SPECIFICATIONS AND OTHER INSTRUCTIONS. CONTRACTOR TO NOTIFY IN WRITING THE CITY OF ADELAIDE OF ANY DISCREPANCIES BETWEEN THE PROJECT DRAWINGS AND STANDARD DETAILS FOR CLARIFICATION PRIOR TO UNDERTAKING THE WORKS.

APPLICATION:

- PARK LANDS AND SQUARES WHERE SPECIFIED

KEYNOTE LEGEND

- PVC/HDPE MAINLINE OR SUB MAIN PIPE. REFER TO PLANS FOR PIPE TYPE & SIZE.
- LOCAL 25mm CONTROL VALVE - GARDEN BED
- 25mm VQA10 ISOLATION VALVE IN 150 SPOTTER BOX
- LOCAL 25mm CONTROL VALVE - TREE RINGS
- 25mm LDPE HEADER PIPE
- BARBED REDUCING LDPE TEE 25x13mm (DETAIL A)
- BARBED REDUCING LDPE ELBOW 25x13mm
- BARBED 25x25mm LDPE POLY TEE CONNECTOR
- 13mm NETAFIM TECHLINE ASPC AT 1.6L/H AND LAID AT FINISHED LEVEL, UNO.
- 25mm LDPE PIPE WORK
- RESERVED
- DEDICATED TREE RING IRRIGATION (REFER TO CoA 631)
- AIR RELIEF VALVE IN 150 SPOTTER BOX (HIGH POINT)
- FLUSHING VALVE IN 150 SPOTTER BOX (LOW POINT)
- 25mm LDPE FLUSH PIPE
- CONTINUATION OF LDPE PIPE WORK TO NEXT TREE
- 25mm TEE WITH 25mm FEMALE BSP THREAD
- 25mm LDPE POLY DIRECTOR WITH BARBED END
- STAINLESS STEEL 'COBRA' CLIPS
- 25mm LDPE POLY DIRECTOR WITH 19mm BARBED BRANCH OUTLET
- NEW 75mm HIGH CoA PARK LAND MULCH
- NEW 80/20 SANDY / LOAM SOIL
- 25mm LDPE HEADER OR FLUSH PIPE BEYOND
- EXCAVATED SUB-GRADE LEVEL

CoA 629 DRIP IRRIGATION INSTALLATION DETAILS


REV	DESCRIPTION	DATE
A	ORIGINAL ISSUE	07/22

CONSTRUCTION STANDARDS

LANDSCAPE

IRRIGATION

DRIP IRRIGATION INSTALLATION DETAILS - GARDEN BED WITH A TREE

CITY OF ADELAIDE

SHEET NUMBER
LS030

REVISION
A