

GENERAL NOTES:

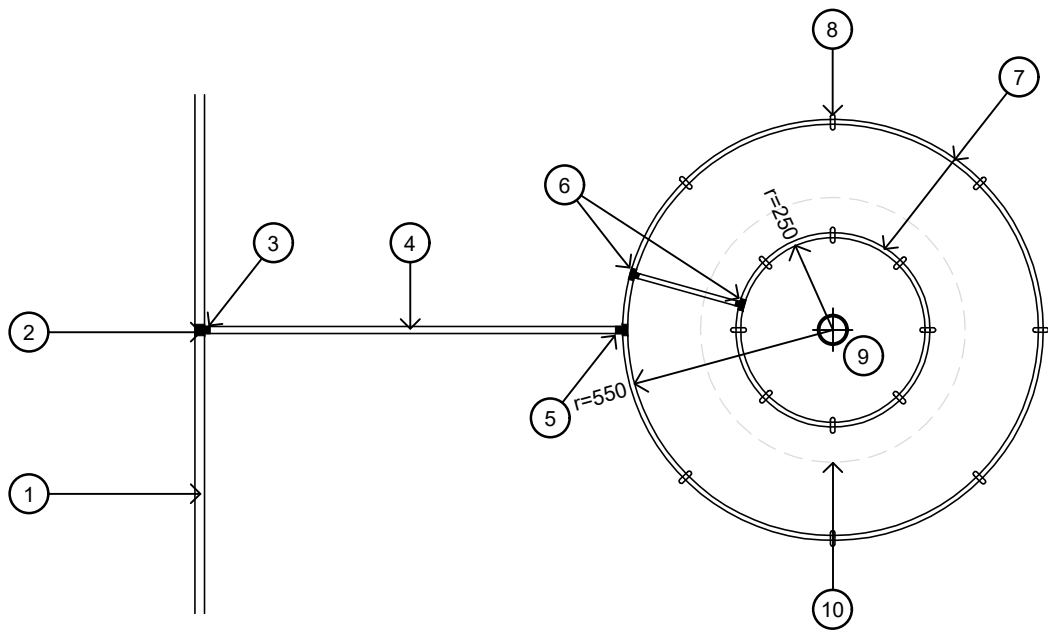
- ALL TECH LINES SHALL BE INSTALLED TO THE MANUFACTURER'S SPECIFICATIONS.
- IF A TREE IS PLACED WITHIN A TURF AREA, THE IRRIGATION TO BE ALLOCATED TO A SEPARATE VALVE ASSEMBLY. TURF VALVES ARE NOT TO IRRIGATE TREES UNLESS ADVISED OTHERWISE BY COA IRRIGATION TECHNICAL OFFICER.
- ALL JOINS TO BE CLIPPED WITH STAINLESS STEEL 'COBRA' TYPE FITTINGS TO BARBED END FITTINGS.
- LDPE SHALL CONFORM TO AS2698.
- 13, 19, 25 AND 32mm PIPE SIZES ONLY TO BE USED.
- ALL TREE RING TECH LINES TO BE LAID AT FINISHED SURFACE LEVEL AND 300mm SPACING WITH 75mm MULCH OVER.
- THE CONTRACTOR SHALL CAREFULLY STUDY AND COMPARE ALL DRAWINGS, SPECIFICATIONS AND OTHER INSTRUCTIONS. CONTRACTOR TO NOTIFY IN WRITING THE CITY OF ADELAIDE OF ANY DISCREPANCIES BETWEEN THE PROJECT DRAWINGS AND STANDARD DETAILS FOR CLARIFICATION PRIOR TO UNDERTAKING THE WORKS.

APPLICATION:

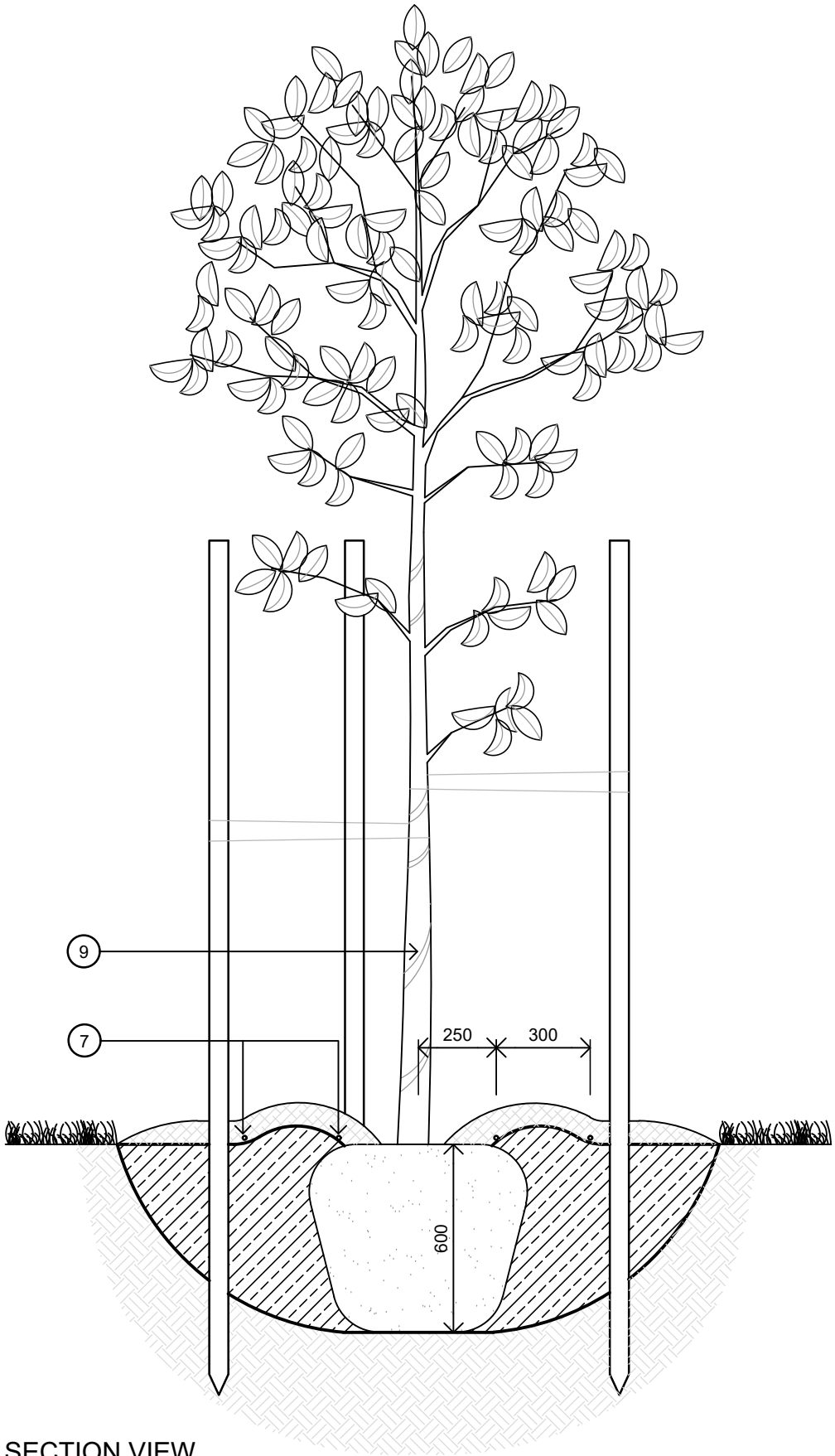
- PARK LANDS AND SQUARES WHERE SPECIFIED
- LIAISE WITH COA IRRIGATION TECHNICAL OFFICER ON EXTENT

KEYNOTE LEGEND

1. MAINLINE OR SUB MAIN PIPE. REFER TO PLANS FOR PIPE TYPE & SIZE.
2. 25mm HDPE TEE WITH 25mm FEMALE BSP THREAD
3. 25mm LDPE POLY DIRECTOR WITH 19mm BARBED BRANCH OUTLET
4. 19mm LDPE PIPE WORK
5. BARBED13mm LDPE INCREASING TEE WITH 19mm BARBED BRANCH OUTLET
6. BARBED13mm LDPE TEE
7. 2 x LOOPS OF 13mm NETAFIM TECHLINE ASPC 1.6L/HR @ 300mm SPACING (MIN 4 DRIPPERS PER LOOP) TO BE PLACED UNDER MULCH
8. GALVANISED HOLDING PINS TO HOLD RINGS IN PLACE
9. REFER TO CoA STANDARD DETAIL 6XX FOR TREE PLANTING DETAIL
10. APPROXIMATE ROOT BALL EXTENT



PLAN VIEW
1 : 20 @ A3



SECTION VIEW
1 : 20 @ A3


CoA 631

TREE RING IRRIGATION INSTALLATION DETAILS

CONSTRUCTION STANDARD
LANDSCAPE

IRRIGATION
TREE RING IRRIGATION INSTALLATION DETAILS

REV	DESCRIPTION	DATE
A	ORIGINAL ISSUE	03/23

 CITY OF ADELAIDE	
SHEET NUMBER LS032	REVISION A