

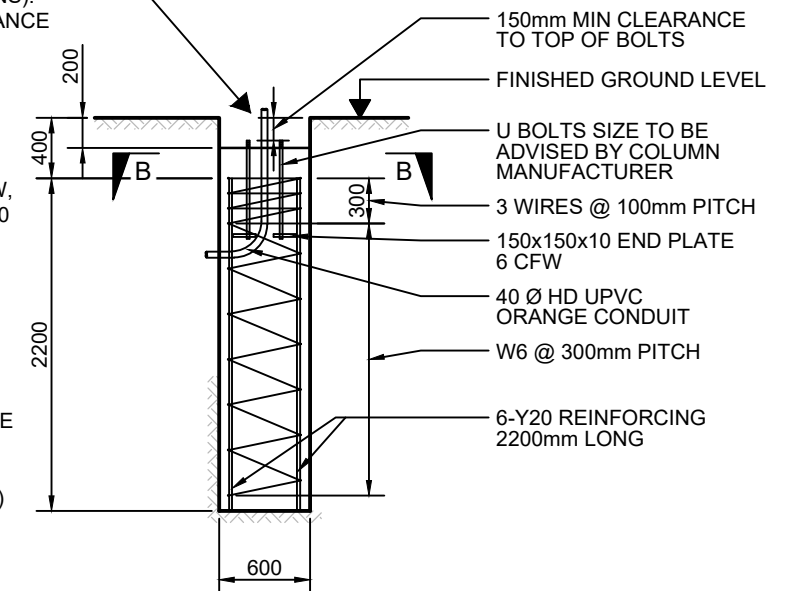
IN-GROUND COLUMN FOOTING (TYPICAL)

ANTI-CORROSION COATING
THE RAG BOLTS AND COLUMN/BASE PLATE (TOP & BOTTOM) SHALL BE PAINTED TO 100mm A.F.G.L. WITH 'INTERPLUS 356' (FROM INTERNATIONAL PROTECTIVE COATINGS, PREVIOUSLY TAUBMANS). SURFACE PREPARATION SHALL BE IN ACCORDANCE WITH THE MANUFACTURERS SPECIFICATIONS. (MINIMUM 250 MICRONS DRY FILM THICKNESS)

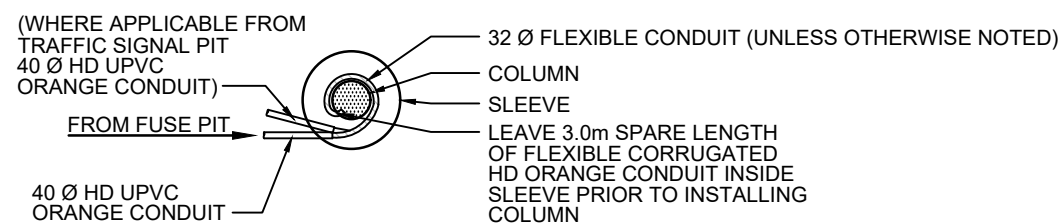
SAND SPECIFICATION
THE SAND TO BE SUPPLIED AND INSTALLED IN ACCORDANCE WITH THE INSTRUCTIONS BELOW, AND BE NON-PLASTIC WITH 100% PASSING A 600 MICRON SIEVE.

TYPICAL 'IN-GROUND' COLUMN INSTALLATION PROCEDURE

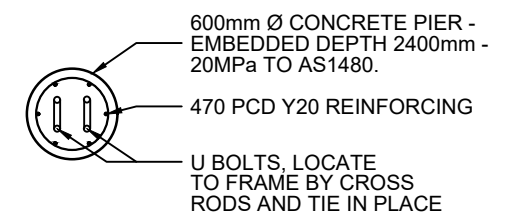
1. BORE HOLE PLUMB TO ACHIEVE 50mm (MIN) CLEARANCE BETWEEN SLEEVE & COLUMN.
2. SET SLEEVE INTO HOLE PLUMB, AND PROVIDE CABLE ENTRY IN APPROPRIATE LOCATION.
3. INSTALL MASONRY SUPPORT BLOCK.
4. INSTALL FLEXIBLE CORRUGATED CONDUIT(S) INTO SLEEVE.
5. PROGRESSIVELY WATER IN SPECIFIED SAND TYPE AROUND SLEEVE.
6. WRAP COLUMN WITH PETROLATUM TAPE OR ALUTAPE.
7. LOWER COLUMN INTO SLEEVE AND FEED CONDUIT(S) PROGRESSIVELY INTO COLUMN.
8. POSITION COLUMN CENTRALLY, PLUMB AND PROGRESSIVELY WATER IN THE SPECIFIED SAND TYPE.



FLANGE MOUNTED COLUMN FOOTING (TYPICAL)



SECTION A-A



SECTION B-B

CONTRACTOR TO REFER TO MANUFACTURES REQUIREMENTS

CoA 810

LIGHTING / TRAFFIC COLUMNS - FOOTING DETAILS

REV	DESCRIPTION	DATE
A	ORIGINAL ISSUE	10/22

CONSTRUCTION STANDARD

LIGHTING & ELECTRICAL

LIGHTING / TRAFFIC COLUMNS
FOOTING DETAILS



SHEET NUMBER
LE010

REVISION
A