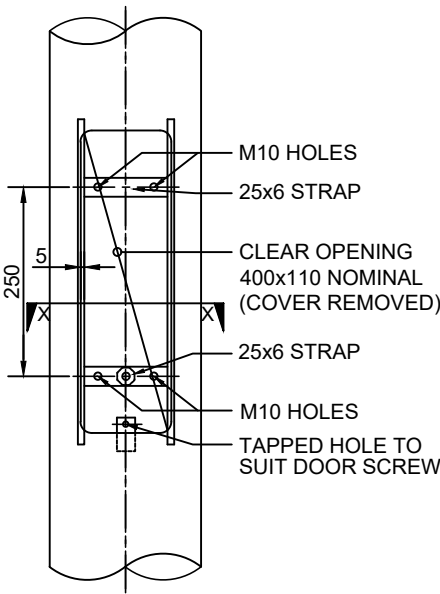
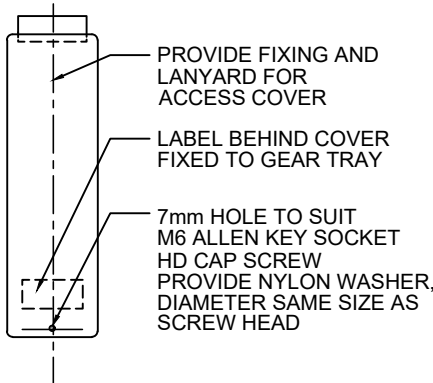


\* DIMENSION TO BE NOTIFIED BY MANUFACTURER

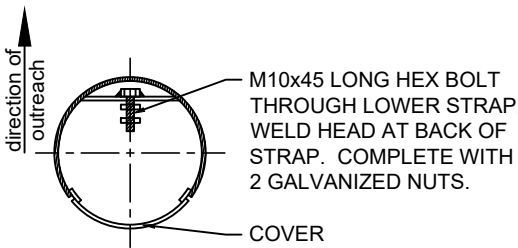
**ELEVATION**



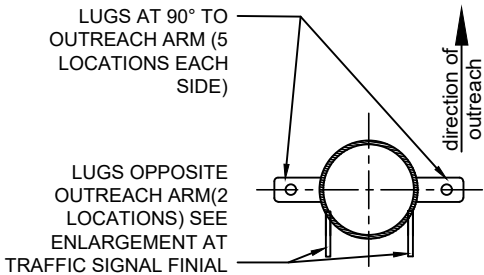
**ENLARGEMENT AT  
ACCESS OPENING**



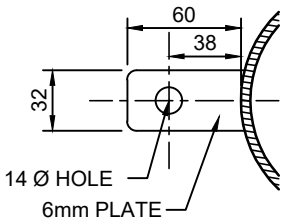
**ACCESS COVER  
DETAIL**



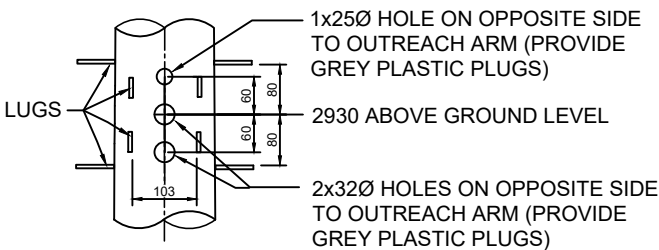
**SECTION X-X**



**SECTION Y-Y**



**LUG DETAIL**



**ENLARGEMENT AT TRAFFIC SIGNAL FINIAL**

**NOTES:**

1. COLUMN TO CONFORM TO RELEVANT AUSTRALIAN STANDARDS AND ATTACHED CoA SPECIFICATION.
2. COLUMN SHALL BE HOT DIPPED GALVANISED.
3. FOR FOOTING DETAILS REFER TO STANDARD CoA 810.
4. LABEL REQUIREMENTS:

CORPORATION OF THE CITY OF ADELAIDE  
MANUFACTURER'S NAME  
CONTRACT NUMBER  
MONTH/YEAR OF MANUFACTURE

FOR CODE REFERENCES, OPTIONS, VARIABLE DIMENSIONS AND  
GENERAL INFORMATION, REFER TO STANDARD CoA 802

**CoA 814**

**9.0m COLUMN WITH TRAFFIC LIGHT ATTACHMENTS**

REV	DESCRIPTION	DATE
A	ORIGINAL ISSUE	10/22

**CONSTRUCTION STANDARD  
LIGHTING & ELECTRICAL**

9.0m COLUMN  
WITH TRAFFIC LIGHT ATTACHMENTS



SHEET NUMBER  
**LE014**

REVISION  
**A**