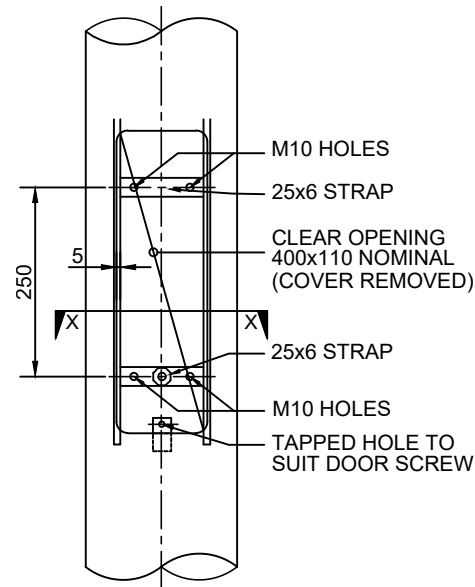
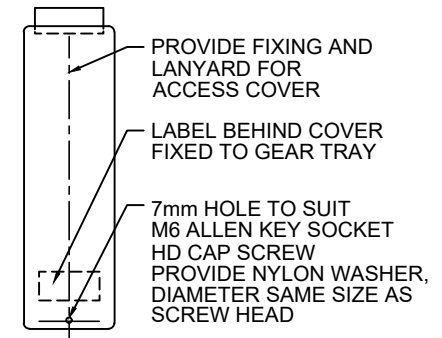


\* NOTE DIMENSION TO BE  
NOTIFIED BY MANUFACTURER

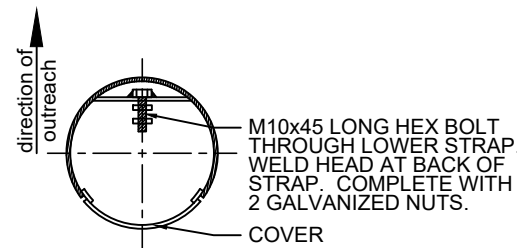
## ELEVATION



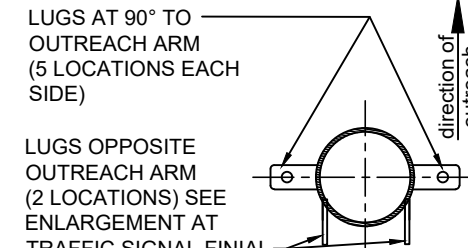
## ENLARGEMENT AT ACCESS OPENING



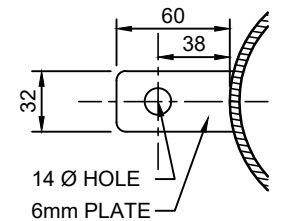
## ACCESS COVER DETAIL



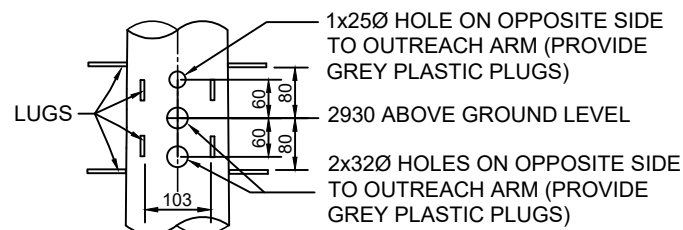
## SECTION X-X



## SECTION Y-Y



## LUG DETAIL



## ENLARGEMENT AT TRAFFIC SIGNAL FINIAL

### NOTES:

- COLUMN TO CONFORM TO RELEVANT AUSTRALIAN STANDARDS AND ATTACHED CoA SPECIFICATION.
- COLUMN SHALL BE HOT DIPPED GALVANISED.
- FOR FOOTING DETAILS REFER TO STANDARD CoA 810.
- LABEL REQUIREMENTS:  
CORPORATION OF THE CITY OF ADELAIDE  
MANUFACTURER'S NAME  
CONTRACT NUMBER  
MONTH/YEAR OF MANUFACTURE

FOR CODE REFERENCES, OPTIONS, VARIABLE DIMENSIONS AND  
GENERAL INFORMATION, REFER TO STANDARD CoA 803

CoA 816

## 10.5m COLUMN WITH TRAFFIC LIGHT ATTACHMENTS

REV	DESCRIPTION	DATE
A	ORIGINAL ISSUE	10/22

## CONSTRUCTION STANDARD LIGHTING & ELECTRICAL

10.5m COLUMN  
WITH TRAFFIC LIGHT ATTACHMENTS



SHEET NUMBER  
**LE016**

REVISION  
**A**