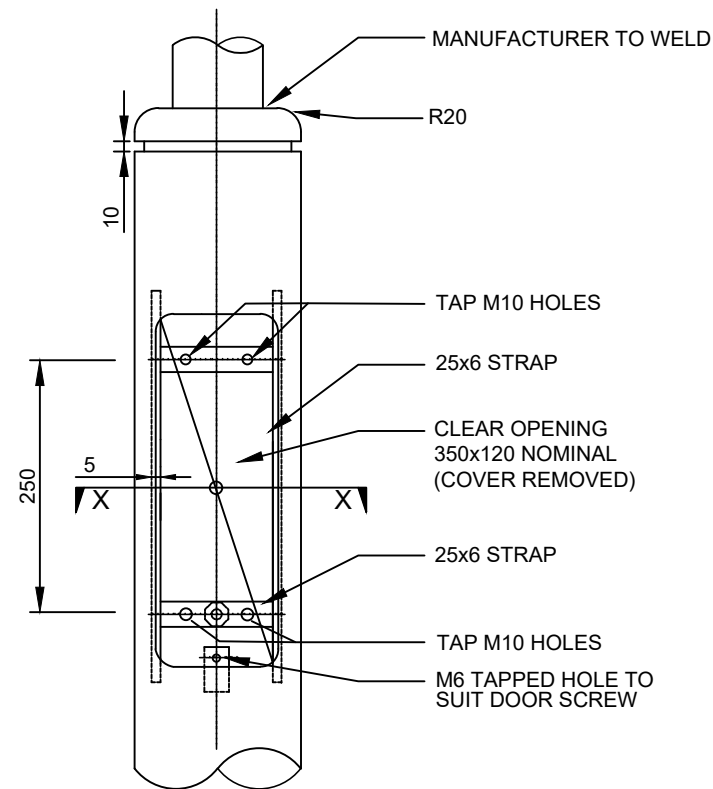
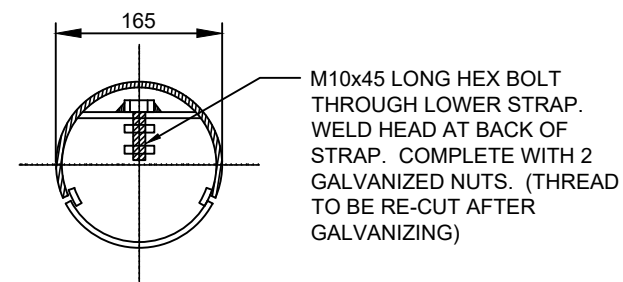


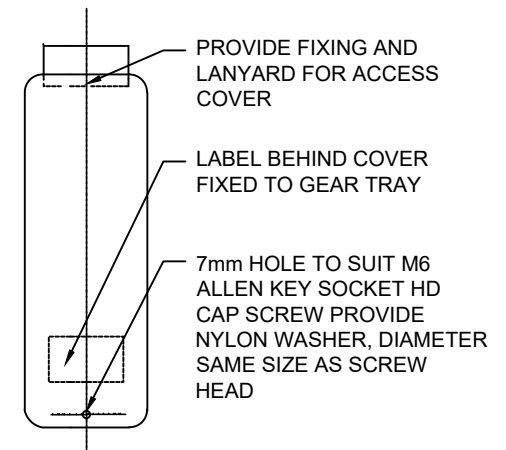
POST TOP LANTERN



ENLARGEMENT AT ACCESS OPENING



SECTION X-X



ACCESS COVER DETAIL

NOTES:

1. FOR FOOTING DETAILS REFER TO STANDARD CoA 804.
2. COLUMN TO CONFORM TO RELEVANT AUSTRALIAN STANDARDS AND ATTACHED CoA SPECIFICATION.
3. COLUMN SHALL BE HOT DIPPED GALVANISED.
4. PAINT FINISH COUNCIL TO CONFIRM PAINT COLOUR REFER PAINTING SPECIFICATION FOR APPLICATION.
5. LABEL REQUIREMENTS:

CORPORATION OF THE CITY OF ADELAIDE
MANUFACTURER'S NAME
CONTRACT NUMBER
MONTH/YEAR OF MANUFACTURE

CoA 832 3.5m POST TOP

REV	DESCRIPTION	DATE
A	ORIGINAL ISSUE	10/22

**CONSTRUCTION STANDARD
LIGHTING & ELECTRICAL**

3.5m POST TOP
STREETS / PARK LANDS



SHEET NUMBER
LE032

REVISION
A