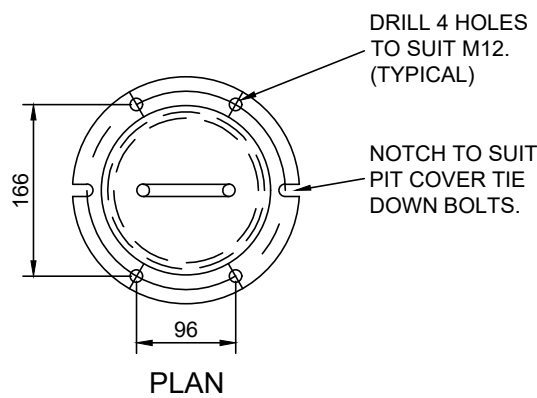
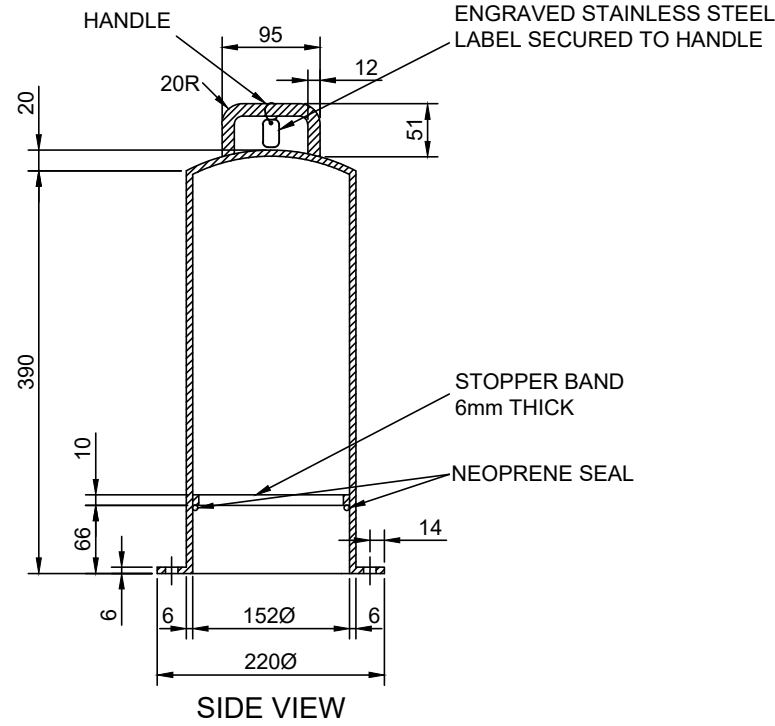
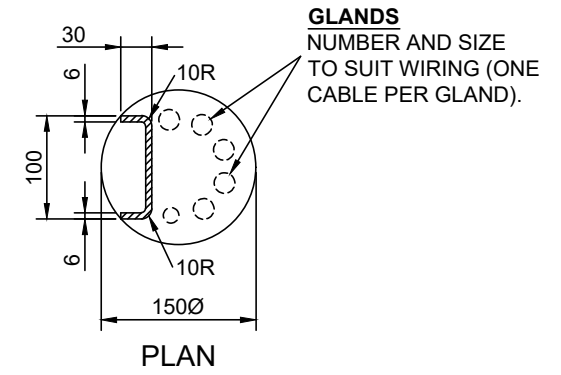
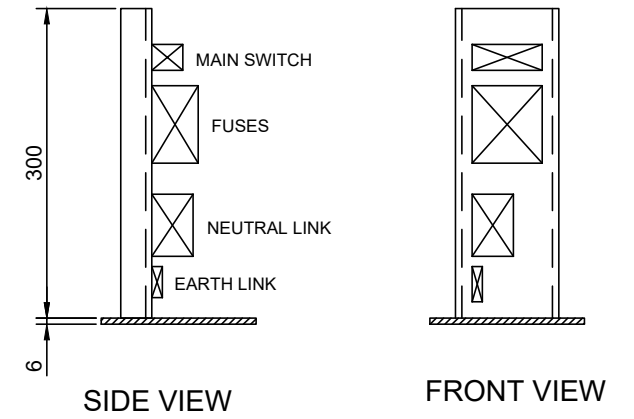


BASE




CONTAINER



INTERNAL BOARD

- NOTES:
1. NYLON NUTS AND BOLTS TO SECURE ALL ELECTRICAL PARTS INSIDE PODS.

**CoA 856 UNDERGROUND ELECTRICAL ENCLOSURE - TYPE 1**

REV	DESCRIPTION	DATE	<p><b>CONSTRUCTION STANDARD</b></p> <p><b>LIGHTING &amp; ELECTRICAL</b></p> <p>UNDERGROUND ELECTRICAL ENCLOSURE TYPE 1</p>		 <p><b>CITY OF ADELAIDE</b></p>	<p>SHEET NUMBER</p> <p><b>LE056</b></p>	<p>REVISION</p> <p><b>A</b></p>
A	ORIGINAL ISSUE	10/22					