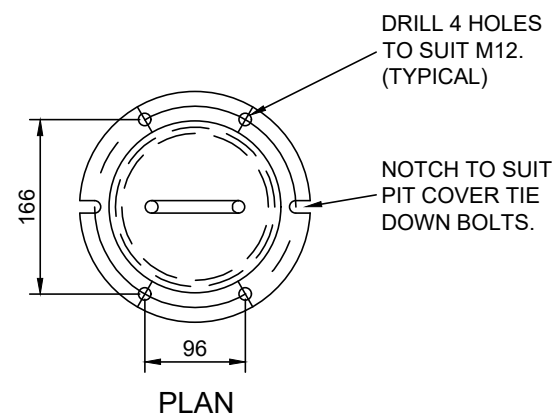
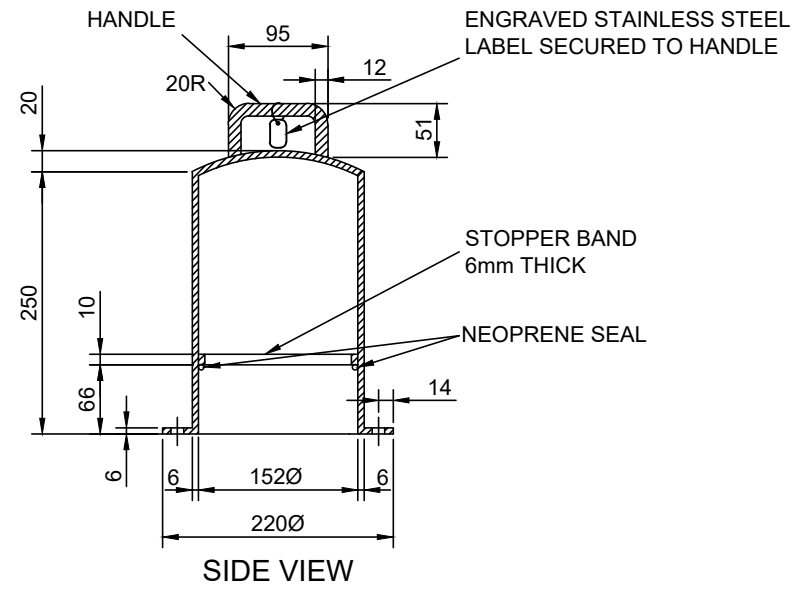
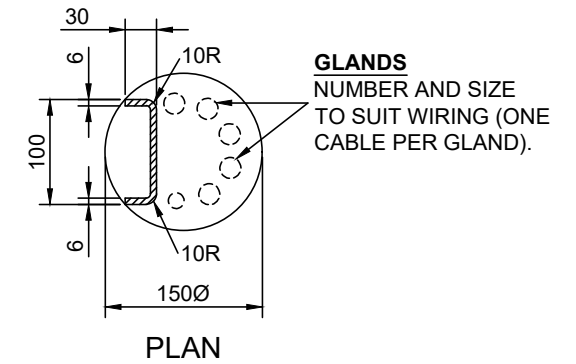
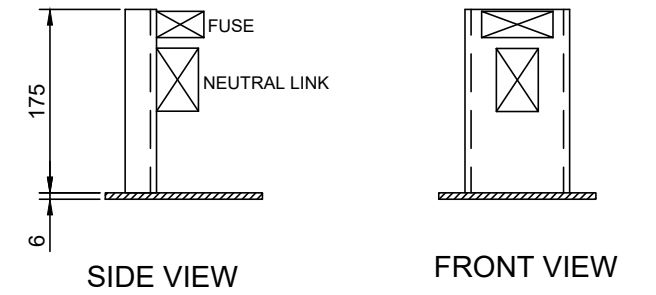


BASE



CONTAINER



INTERNAL BOARD

NOTES:

1. NYLON NUTS AND BOLTS TO SECURE ALL ELECTRICAL PARTS INSIDE PODS.

CoA 857

UNDERGROUND ELECTRICAL ENCLOSURE - TYPE 2

REV	DESCRIPTION	DATE
A	ORIGINAL ISSUE	10/22

CONSTRUCTION STANDARD
LIGHTING & ELECTRICAL

UNDERGROUND ELECTRICAL ENCLOSURE
TYPE 2



SHEET NUMBER
LE057

REVISION
A