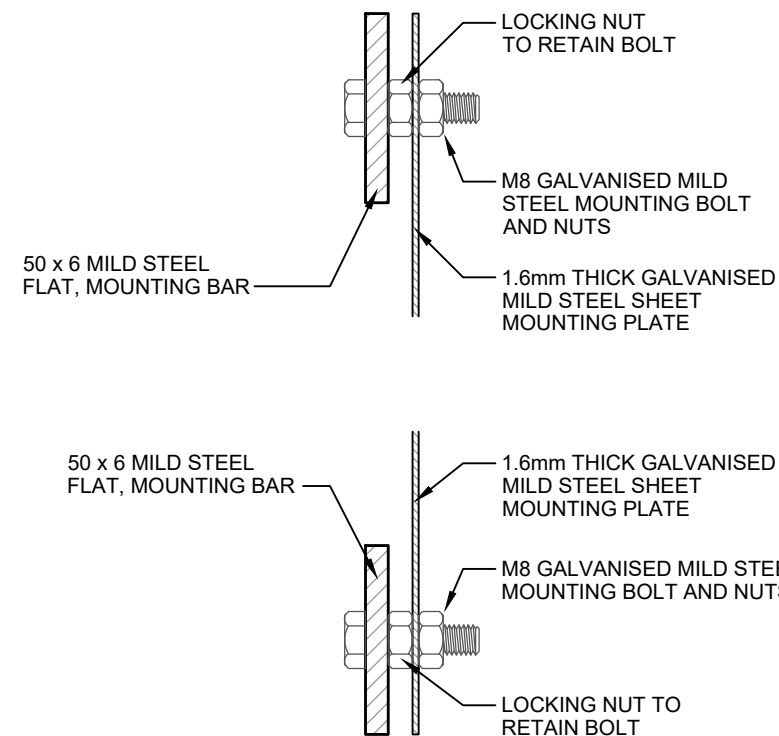
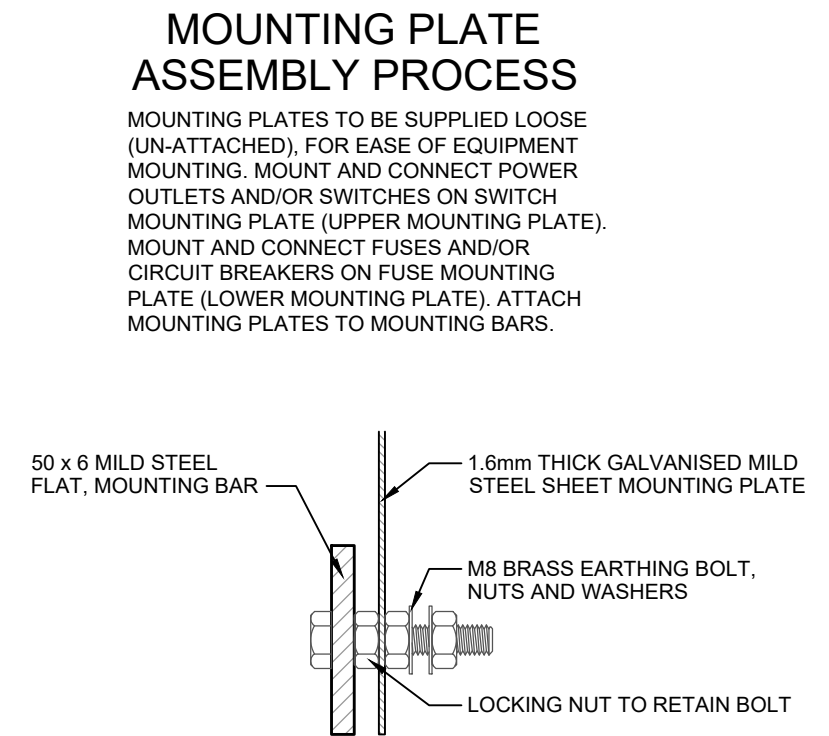


MOUNTING BARS AND PLATES VIEW  
(1:10)



MOUNTING BOLT  
DETAILS  
(1:2)



EARTHING BOLT  
DETAIL  
(1:2)

**MOUNTING PLATE  
ASSEMBLY PROCESS**

MOUNTING PLATES TO BE SUPPLIED LOOSE (UN-ATTACHED), FOR EASE OF EQUIPMENT MOUNTING. MOUNT AND CONNECT POWER OUTLETS AND/OR SWITCHES ON SWITCH MOUNTING PLATE (UPPER MOUNTING PLATE). MOUNT AND CONNECT FUSES AND/OR CIRCUIT BREAKERS ON FUSE MOUNTING PLATE (LOWER MOUNTING PLATE). ATTACH MOUNTING PLATES TO MOUNTING BARS.

FOR VIEW, NOTES &  
INSTALLATION REFER: CoA 870

FOR ELEVATIONS REFER: CoA 871

FOR PLAN DETAILS REFER: CoA 872

FOR SECTION DETAILS REFER: CoA 873

**CoA 874 POWER BOLLARD - SWITCHGEAR MOUNTING BARS & PLATES**

REV	DESCRIPTION	DATE
A	ORIGINAL ISSUE	10/22

**CONSTRUCTION STANDARD**

**LIGHTING & ELECTRICAL**

POWER BOLLARD  
SWITCHGEAR MOUNTING BARS & PLATES



SHEET NUMBER  
**LE074**

REVISION  
**A**