

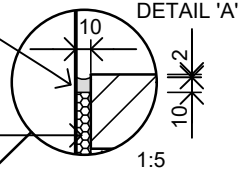
Standard Paver Joint Details 1 - Rigid Base

PRIME & SEAL WITH APPROVED HIGH PERFORMANCE ONE COMPONENT SILYL MODIFIED POLYMER SEALANT - SMOOTH AND RECESSED

APPROVED CLOSED CELL POLYETHYLENE FOAM FILLER STRIP - RIGID

PROVIDE COMPATIBLE CONSTRUCTION ADHESIVE TO FACE OF BUILDING TO HOLD FILLER STRIP IN PLACE

BUILDING/PROPERTY LINE



WEARING SURFACE
ACCORDING TO CoA FOOTPATH
CONSTRUCTION STANDARDS

PAVEMENT ACCORDING TO CoA
FOOTPATH CONSTRUCTION
STANDARDS

CoA 422

BUILDING/PROPERTY LINE INTERFACE

SCALE 1:10 @ A4

WEARING SURFACE
ACCORDING TO CoA FOOTPATH
CONSTRUCTION STANDARDS

PAVEMENT ACCORDING TO
CoA FOOTPATH
CONSTRUCTION
STANDARDS

DETAIL 'A'

PROVIDE COMPATIBLE
CONSTRUCTION ADHESIVE TO
CONCEALED FACE OF KERB TO
HOLD FILLER STRIP IN PLACE

KERB & WATERTABLE
ACCORDING TO CoA CIVIL
STANDARDS

CoA 423

BACK OF KERB LINE INTERFACE

SCALE 1:10 @ A4

APPROVED HIGH STRENGTH
WET POUR GROUT

WEARING SURFACE
ACCORDING TO CoA FOOTPATH
CONSTRUCTION STANDARDS

125x75x6mm GALVANISED
STEEL ANGLE FIXED WITH M10
ANCHORS AT 450mm CRS.
MAX. ADJACENT ASPHALT

PAVEMENT ACCORDING TO CoA
FOOTPATH CONSTRUCTION
STANDARDS

7.5

600 - TYP.
NTS

75

RESTORE EXISTING PAVEMENT
TO MATCH NEW LEVELS AFTER
NEW PAVERS INSTALLED

EXISTING PAVEMENT SURFACE

SAWCUT (ASPHALT ONLY)

CoA 424

EXISTING PAVEMENT INTERFACE

SCALE 1:10 @ A4

REV	DESCRIPTION	DATE
A	ORIGINAL ISSUE	09/22

CONSTRUCTION STANDARDS

PAVEMENTS

JOINT DETAILS 1 - RIGID BASE



**CITY OF
ADELAIDE**

SHEET NUMBER

PV012

REVISION

A