

## Austral Black Granite

*Austral Black Granite is a high quality footpath treatment used throughout the city and is applied to high profile urban address streetscapes and locations.*

### Application:

Refer to CoA City Map Portal - Footpath Wearing Surfaces for application.

### Loading(s):

- Loading Category A - LC-A
- Loading Category B - LC-B
- Loading Category C - LC-C

Refer to CoA representative for footpath loading map.

### Paver Sizes & Tolerances:

- 592.5 x 292.5mm +/- 1mm - Typical
- 292.5 x 292.5mm +/- 1mm - CoA to approve
- 292.5 x 142.5mm +/- 1mm - CoA to approve
- 142.5 x 142.5mm +/- 1mm - CoA to approve

Refer to CoA 438 & 439 for applicable paver thickness.

### Surface Finishes:

- Flamed - Typical
- Bush Hammer - CoA to approve

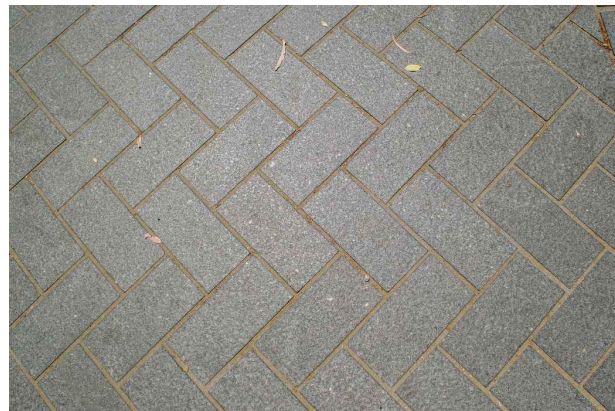
### Paver Edge Finish:

- Arressed - no greater than 2mm

### Laying Pattern(s):

- Stretcher + Perpendicular - Typical

Refer to CoA 440 for paving layout.

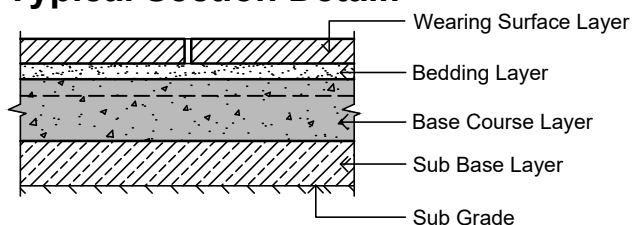


**Austral Black Granite**

### Paver Properties & Criteria:

| Material Properties             | Test Method(s)   | Test Standard(s)           | Minimum Requirements                                      |
|---------------------------------|------------------|----------------------------|---|
| Flexural Strength               | AS4456.5: 2003   | BS7533 - Part 12: Table C1 | 15MPa   |
| Slip Resistance                 | SI: AWL: 201     | SAHB 198: 2014             | < 1 in 14: P4<br>> 1 in 14: P5                            |
| Slip with A/wear                | SI: AWL: 201     | N/A                        | P3 at 10,000 cycles                                       |
| Skid Resistance                 | SI: AWT          | DIT Tech. Note 24          | Minimum grip number 0.4                                   |
| Skid with A/wear                | SI: AWT          | N/A                        | 0.3 at 10,000 cycles                                      |
| Mean Luminous Reflectance Value | AS1428.4.1 -2009 | AS1428.4.1 -2009           | Luminance contrast w/ integrated TGSI's not less than 30% |

### Typical Section Detail:



Refer to CoA 438 & 439 for Pavement Requirements

### Standard Drawing References:

#### General

- TS 001 - Footpath Technical Specification
- CoA 420 - Loading Category Map
- CoA 421 - Standard Pavement Notes
- CoA 422 - CoA 430 - Joint Details - Cement Treated and Rigid Bases

#### Austral Black

- CoA 437 - Wearing Surface Requirements
- CoA 438 - Pavement Requirements 1
- CoA 439 - Pavement Requirements 2
- CoA 440 - Pavement Arrangement



| REV | DESCRIPTION    | DATE  | CONSTRUCTION STANDARDS<br><br>PAVEMENTS<br><br>AUSTRAL BLACK: WEARING SURFACE REQUIREMENTS | <br>CITY OF ADELAIDE |
|-----|----------------|-------|--|---|
| A   | ORIGINAL ISSUE | 11/22 |  |   |
|     |                |       |  |   |
|     |                |       |  |   |
|     |                |       |  |   |
|     |                |       |  |   |
|     |                |       |  |   |
|     |                |       |  |   |
|     |                |       |  |   |
|     |                |       |  |   |

| SHEET NUMBER | REVISION |
|--------------|----------|
| <b>PV020</b> | <b>A</b> |