

Mintaro Slate Paver

Mintaro Slate Paver is a high quality footpath treatment used throughout the city and is applied to high profile urban address streetscapes and locations.

Application:

Refer to CoA City Map Portal - Footpath Wearing Surfaces for application.

Loading(s):

- Loading Category A - LC-A
- Loading Category B - LC-B
- Loading Category C - LC-C

Refer to CoA representative for footpath loading map.

Paver Sizes & Tolerances:

- 500 x 500mm +/- 1mm - Typical & Footpath Edging
- 500 x 300mm +/- 1mm - Driveway Edges
- 250 x 250mm +/- 1mm - Driveways only

Refer to CoA 446 & 447 for applicable paver thickness.

Surface Finishes:

- Split Face - Typical

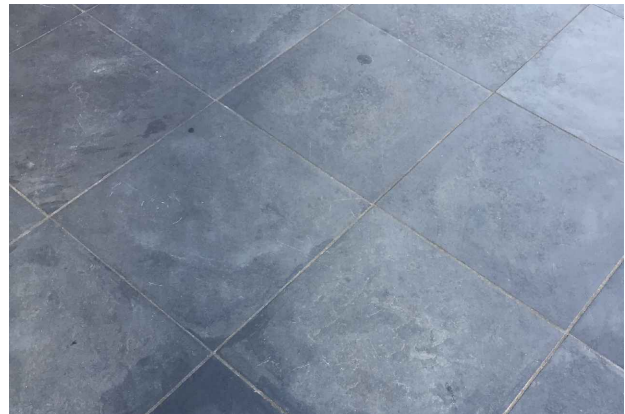
Paver Edge Finish:

- Arressed - no greater than 2mm

Laying Pattern(s):

- Stacked Bond - 1x row to Back of Kerb & Property Line
- Stacked Bond + Diagonal - Typical & Driveway
- Stacked Bond - 4x rows at Driveway Edges

Refer to CoA 448 for paving layout.

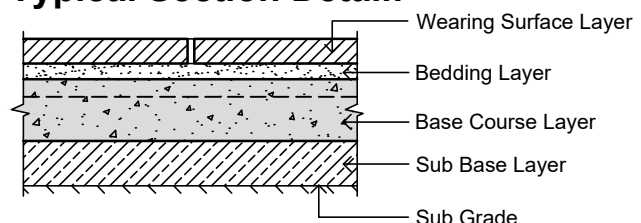


Mintaro Slate Paver

Paver Properties & Criteria:

Material Properties	Test Method(s)	Test Standard(s)	Minimum Requirements
Flexural Strength	AS4456.5: 2003	BS7533 - Part 12: Table C1	12MPa
Slip Resistance	SI: AWL: 201	SAHB 198: 2014	< 1 in 14: P4 > 1 in 14: P5
Slip with A/wear	SI: AWL: 201	N/A	P3 at 10,000 cycles
Skid Resistance	SI: AWT	DIT Tech. Note 24	Minimum grip number 0.4
Skid with A/wear	SI: AWT	N/A	0.3 at 10,000 cycles
Mean Luminous Reflectance Value	AS1428.4.1 -2009	AS1428.4.1 -2009	Luminance contrast w/ integrated TGSi's not less than 30%

Typical Section Detail:



Refer to CoA 446 & 447 for Pavement Requirements

Standard Drawing References:

General

- TS 001 - Footpath Technical Specification
- CoA 420 - Loading Category Map
- CoA 421 - Standard Pavement Notes
- CoA 422 - CoA 430 - Joint Details - Cement Treated and Rigid Bases

Mintaro Slate

- CoA 445 - Wearing Surface Requirements
- CoA 446 - Pavement Requirements 1
- CoA 447 - Pavement Requirements 2
- CoA 448 - Pavement Arrangement



REV	DESCRIPTION	DATE	CONSTRUCTION STANDARDS PAVEMENTS MINTARO SLATE : WEARING SURFACE REQUIREMENTS	 CITY OF ADELAIDE
A	ORIGINAL ISSUE	11/22		

SHEET NUMBER	REVISION
PV028	A