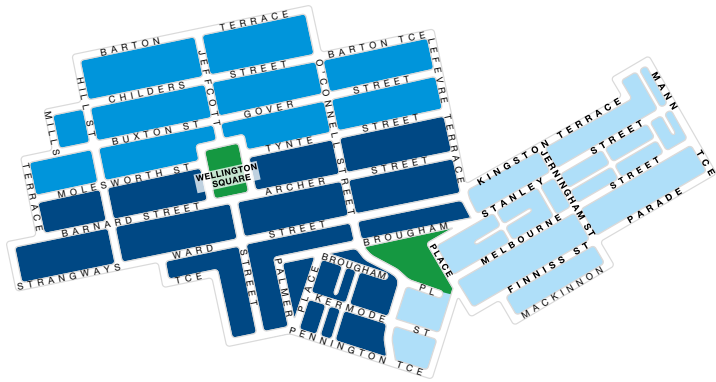


CITY OF ADELAIDE RESIDENTS 2024 RECYCLING & WASTE CALENDAR



2024 NORTH ADELAIDE COLLECTION CALENDAR

● TUESDAY ● THURSDAY ● FRIDAY



- Green organics bin is collected fortnightly on Mondays.
- Yellow recycling bin is collected fortnightly on the same day as your red waste bin.
- Red waste bin is collected weekly. See map to find out which day.
- No collection occurs on New Year's Day. Collections that week will occur on the day following your normal collection day.

JANUARY

M	T	W	T	F	S	S
1	2	3	4	5	6	7
8	9	10	11	12	13	14
15	16	17	18	19	20	21
22	23	24	25	26	27	28
29	30	31				

FEBRUARY

M	T	W	T	F	S	S
			1	2	3	4
5	6	7	8	9	10	11
12	13	14	15	16	17	18
19	20	21	22	23	24	25
26	27	28	29			

MARCH

M	T	W	T	F	S	S
				1	2	3
4	5	6	7	8	9	10
11	12	13	14	15	16	17
18	19	20	21	22	23	24
25	26	27	28	29	30	31

APRIL

M	T	W	T	F	S	S
1	2	3	4	5	6	7
8	9	10	11	12	13	14
15	16	17	18	19	20	21
22	23	24	25	26	27	28
29	30					

MAY

M	T	W	T	F	S	S
		1	2	3	4	5
6	7	8	9	10	11	12
13	14	15	16	17	18	19
20	21	22	23	24	25	26
27	28	29	30	31		

JUNE

M	T	W	T	F	S	S
					1	2
3	4	5	6	7	8	9
10	11	12	13	14	15	16
17	18	19	20	21	22	23
24	25	26	27	28	29	30

JULY

M	T	W	T	F	S	S
1	2	3	4	5	6	7
8	9	10	11	12	13	14
15	16	17	18	19	20	21
22	23	24	25	26	27	28
29	30	31				

AUGUST

M	T	W	T	F	S	S
			1	2	3	4
5	6	7	8	9	10	11
12	13	14	15	16	17	18
19	20	21	22	23	24	25
26	27	28	29	30	31	

SEPTEMBER

M	T	W	T	F	S	S
						1
2	3	4	5	6	7	8
9	10	11	12	13	14	15
16	17	18	19	20	21	22
23	24	25	26	27	28	29
30						

OCTOBER

M	T	W	T	F	S	S
	1	2	3	4	5	6
7	8	9	10	11	12	13
14	15	16	17	18	19	20
21	22	23	24	25	26	27
28	29	30	31			

NOVEMBER

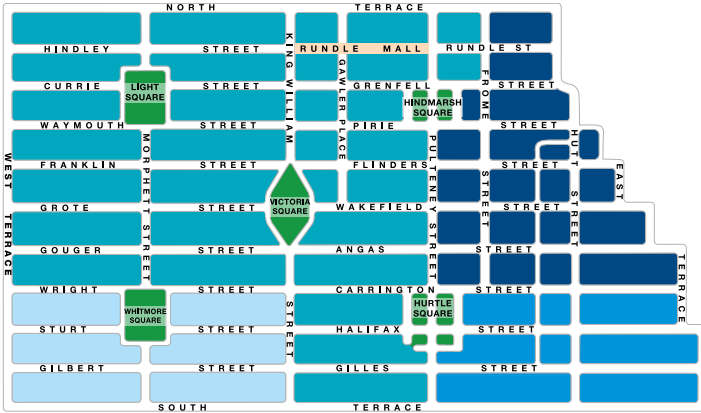
M	T	W	T	F	S	S
				1	2	3
4	5	6	7	8	9	10
11	12	13	14	15	16	17
18	19	20	21	22	23	24
25	26	27	28	29	30	

DECEMBER

M	T	W	T	F	S	S
						1
2	3	4	5	6	7	8
9	10	11	12	13	14	15
16	17	18	19	20	21	22
23	24	25	26	27	28	29
30	31					

2024 CBD COLLECTION CALENDAR

● TUESDAY
 ● WEDNESDAY
 ● THURSDAY
 ● FRIDAY



- Green organics bin is collected fortnightly on Mondays.
- Yellow recycling bin is collected fortnightly on the same day as your red waste bin.
- Red waste bin is collected weekly. See map to find out which day.
- No collection occurs on Christmas Day. Collections that week will occur on the day following your normal collection day.

JANUARY

M	T	W	T	F	S	S
1	2	3	4	5	6	7
8	9	10	11	12	13	14
15	16	17	18	19	20	21
22	23	24	25	26	27	28
29	30	31				

APRIL

M	T	W	T	F	S	S
1	2	3	4	5	6	7
8	9	10	11	12	13	14
15	16	17	18	19	20	21
22	23	24	25	26	27	28
29	30					

JULY

M	T	W	T	F	S	S
1	2	3	4	5	6	7
8	9	10	11	12	13	14
15	16	17	18	19	20	21
22	23	24	25	26	27	28
29	30	31				

OCTOBER

M	T	W	T	F	S	S
	1	2	3	4	5	6
7	8	9	10	11	12	13
14	15	16	17	18	19	20
21	22	23	24	25	26	27
28	29	30	31			

FEBRUARY

M	T	W	T	F	S	S
			1	2	3	4
5	6	7	8	9	10	11
12	13	14	15	16	17	18
19	20	21	22	23	24	25
26	27	28	29			

MAY

M	T	W	T	F	S	S
			1	2	3	4
			5	6	7	8
9	10	11	12	13	14	15
16	17	18	19	20	21	22
23	24	25	26	27	28	29
30	31					

AUGUST

M	T	W	T	F	S	S
			1	2	3	4
5	6	7	8	9	10	11
12	13	14	15	16	17	18
19	20	21	22	23	24	25
26	27	28	29	30	31	

NOVEMBER

M	T	W	T	F	S	S
				1	2	3
4	5	6	7	8	9	10
11	12	13	14	15	16	17
18	19	20	21	22	23	24
25	26	27	28	29	30	

MARCH

M	T	W	T	F	S	S
				1	2	3
4	5	6	7	8	9	10
11	12	13	14	15	16	17
18	19	20	21	22	23	24
25	26	27	28	29	30	31

JUNE

M	T	W	T	F	S	S
					1	2
3	4	5	6	7	8	9
10	11	12	13	14	15	16
17	18	19	20	21	22	23
24	25	26	27	28	29	30

SEPTEMBER

M	T	W	T	F	S	S
						1
2	3	4	5	6	7	8
9	10	11	12	13	14	15
16	17	18	19	20	21	22
23	24	25	26	27	28	29
30						

DECEMBER

M	T	W	T	F	S	S
						1
2	3	4	5	6	7	8
9	10	11	12	13	14	15
16	17	18	19	20	21	22
23	24	25	26	27	28	29
30	31					

BIN COLLECTION GUIDELINES

Together, we are working toward a more circular economy where we reduce our waste going to landfill and recycle and compost more.

That's why the City of Adelaide provides a regular kerbside collection service for residents, which includes a green organics bin, yellow recycling bin, a red waste bin and an at-call hard waste service.

For more details, visit: [cityofadelaide.com.au/resident-waste-recycling](https://www.cityofadelaide.com.au/resident-waste-recycling)

If you are interested to learn more about our key programs and projects leading us towards a more circular economy, visit [cityofadelaide.com.au/circular-economy](https://www.cityofadelaide.com.au/circular-economy)

TO ENSURE YOUR BINS ARE COLLECTED

- Put your bins out before 6am on the day of collection and please retrieve them on the same day.
- Face your bins forward with the wheels towards the house.
- Make sure your bin lids are closed.
- Where practical, please keep 30cm between bins and 1m between bins and parked cars, trees, stobie poles and letter boxes.

Bins are the property of the City of Adelaide and must be left at the property if you move.

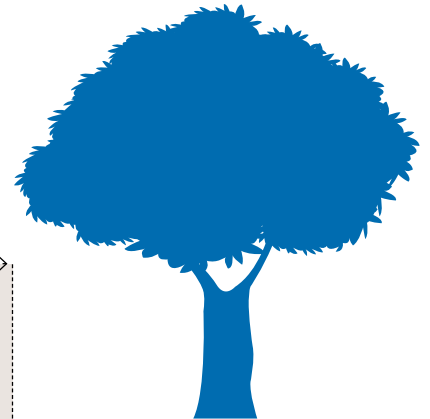
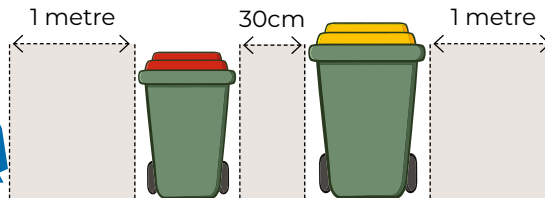
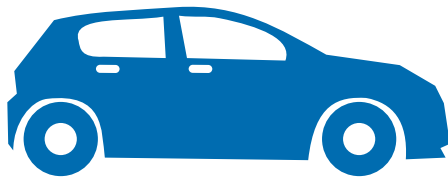
ENQUIRIES

Visit [waste.cityofadelaide.com.au](https://www.waste.cityofadelaide.com.au) or call the waste hotline 1800 777 844 to:

- request a green organics bin
- request bin repairs or replacements
- report unemptied bins
- report lost or stolen bins

BIN DAY CHECKER

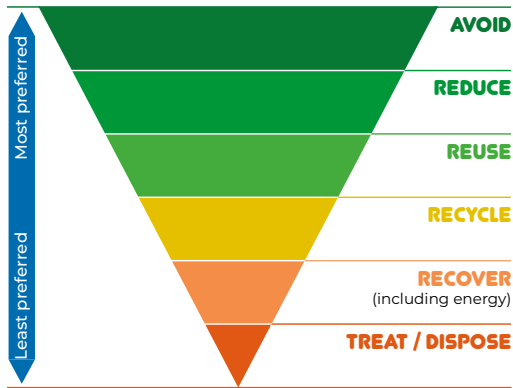
You can easily check your next bin day collection by going to [cityofadelaide.com.au/binday](https://www.cityofadelaide.com.au/binday)



CONSIDER REPAIR, DONATION AND REUSE

Keeping materials in circulation contributes to a more circular economy. Before sending items to landfill, consider repairing them. Many items in reasonable condition can be donated, sold or gifted.

THE WASTE MANAGEMENT HIERARCHY



MULCH AND GARDEN WASTE

Larger quantities of garden green waste can be dropped off at the centre below. Rate paying residents can drop off up to 4 FREE trailer loads each year and will receive 50% discount on mulch purchases.

Green Waste Recycling and Mulch Centre

War Memorial Drive, North Adelaide - 8203 7502

cityofadelaide.com.au/greenwaste

ELECTRONIC WASTE (E-WASTE)

Products with a battery or a plug, like a hairdryer, are considered e-waste and are banned from landfill in SA.

These items cannot be placed in any of your kerbside bins. E-waste can be collected as part of your hard waste collection or can be dropped off for FREE at:

Unplug n' Drop

electronicrecyclingaustralia.com.au

Welland Solid Waste Services

158 Frederick St, Welland

Beverley Waste and Recycling Centre

2-6 Toogood Ave, Beverley

Adelaide Waste and Recycling Centre

181 Morphett Rd, North Plympton

Reuse and Recycle Hubs

At four City of Adelaide facilities, for small e-waste only.

HOUSEHOLD HAZARDOUS WASTE

Hazardous household waste like pesticides, insecticides, herbicides, solvents, paints, pool chemicals etc. can be dropped off for FREE at four locations:

North Plympton, Campbelltown, Edinburgh North and Healthfield.

For more information visit

greenindustries.sa.gov.au/hazwaste or call 8204 2051

GREEN ORGANICS BIN

WHICH BIN? THE GREEN BIN



Egg shells and oyster shells



Cheese and yoghurt



Food scraps (cooked and raw)



Meat, seafood and bones



Tea bags and coffee grounds



Paper towel and tissues



Shredded paper



Lawn clippings, leaves and flowers



Compostable food containers



AS 4736 certified compostable food packaging accepted. Look for this logo to be sure it's compostable.

NEVER IN THE GREEN BIN



NO plastic bags or liners



NO tools, hoses or plant pots



NO glass



NO nappies



NO general waste



NO dirt, rocks or building materials



NO polystyrene or foam



NO clothing, footwear or textiles

HAVE YOU GOT YOUR KITCHEN CADDY YET?



**CATCH 'EM
IN A CADDY**

**FEED 'EM TO
THE GREEN BIN**

Did you know more than 30% of material placed in the red waste bin is food scraps that could have been composted?

A kitchen caddy can be used at home, often on the kitchen bench, to help collect food scraps, making it easier to use your green organics bin.

The materials in your kerbside green organics bin are turned into mulch and compost for gardens, orchards and vineyards, helping reduce your carbon footprint and create a more circular economy.

Further information about the process can be found on the last page of this booklet.

City of Adelaide residents can collect a kitchen caddy and compostable liners from City of Adelaide community centres, libraries, or the Customer Centre at 25 Pirie Street Adelaide.

cityofadelaide.com.au/resident-organics

YELLOW RECYCLING BIN

WHICH BIN? THE YELLOW BIN



Rigid plastic containers



Glass bottles and jars



Tins, cans and aerosols



Aluminium foil



Paper and cardboard



Juice and milk cartons

Please place all recyclable items loose in the yellow bin - not in plastic bags.

NEVER IN THE YELLOW BIN



NO soft plastics



NO polystyrene or foam



NO food or garden waste



NO batteries or electronics



NO broken glassware or crockery



NO shredded paper



NO clothing, footwear or textiles



NO squeezable yoghurt pouches

When placed in the bin, batteries and e-waste can cause truck fires. Recycle used batteries and other hard-to-recycle items at our Reuse and Recycle Hubs. Hub locations are on the next page.

For more information about disposal of these items, please refer to page 5 or go to **WHICHBIN.SA.GOV.AU**

REUSE AND RECYCLE HUBS

VISIT A HUB TODAY

- **City of Adelaide Customer Centre**
25 Pirie Street
- **City Library**
3 Rundle Place, 77–91 Rundle Mall
- **Minor Works Building Community Centre**
22 Stamford Court
- **North Adelaide Library**
176 Tynte Street



Fluorescent tubes

Up to 1.2 metres long. Only at two Hubs.



Blister packs

Aluminium and plastic composite type, must be empty.



Eye glasses or sunglasses

That can be refurbished or reused.



Batteries

Any that fit in the slot, except lead acid.



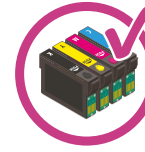
E-waste, cords and chargers

Any item smaller than 17 x 28cm that plugs into a power point, uses a charger or is battery powered.



Mobile phones and tablets

Including iPads, tablets and accessories.



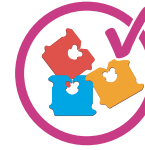
Printer cartridges

Any that fit in the slot.



Light globes

Small intact light globes.



Plastic bread tags

No cardboard or face mask tags please!

Learn more about what can be recycled

[cityofadelaide.com.au/reuse-recycle-hubs](https://www.cityofadelaide.com.au/reuse-recycle-hubs)



RED WASTE BIN

WHICH BIN? THE RED BIN



Plastic bags



Soft plastics



Polystyrene and foam



Single use nappies



Broken crockery and glassware



Ropes and hoses



Coffee cups



Old clothing, footwear, and textiles

NEVER IN THE RED BIN



NO food waste



NO batteries or electronics



NO motor oil



NO liquid paint



NO building rubble or dirt



NO chemicals or poisons

Food scraps should always go in the green organics bin. All other items noted above are banned from any household bin.

For information about how to dispose of these items, please refer to page 5 or go to **WHICHBIN.SA.GOV.AU**

ON-CALL HARD WASTE COLLECTIONS

ACCEPTED



Broken furniture



Mattresses



Small electrical items



Branches and sticks
(max. 2m long, 30cm diameter)



Timber, metal and plaster sheets
(max. 2m long)



Fridges, washing machines, stoves and dryers

To book a hard waste collection please go to
waste.cityofadelaide.com.au

NOT ACCEPTED



NO tyres, car parts or batteries



NO liquid paint



NO gas bottles or asbestos



NO soil, dirt, sand, rocks or building materials



NO chemicals or poisons



NO items too big or heavy for 2 people

It is unlawful to dispose of your waste in a public space without Council permission such as a booked hard waste collection. Refer to page 5 for information on how to safely dispose of hazardous waste.

THE FOOD RECYCLING PROCESS

When you put food waste in your green bin, it gets turned into something great for farmers and gardeners.

The resulting compost is used on South Australian farms, vineyards and orchards to grow our food.

Screening is done to remove contaminants such as plastic, textiles, glass and metal.

Over 8 – 10 weeks, with the help of microbes, water, oxygen and the right temperature, the materials break down.

You create and collect food scraps and the cycle begins again.

After your green bin is emptied, the food and garden organic materials are taken to a composting facility.



This calendar has been printed on 100% recycled paper.