



STANDARD	DESCRIPTION	DRAWING
LT 001-01	DRAWING INDEX (This sheet)	C-ES-001-00
LT 002-01	ELECTRICAL LEGEND	C-ES-001-01
LT 010-01	COLUMN OPTIONS	C-ES-100-01
LT 010-02	COLUMN OPTIONS	C-ES-100-02
LT 020-01	LIGHTING/TRAFFIC COLUMNS Footing Details	C-ES-101-01
LT 030-01	POST TOP Location Details Typical	C-ES-120-01
LT 030-02	STREET LIGHTING Location Details Typical	C-ES-120-02
LT 110-01	3.5M POST TOP Ceremonial Column	C-ES-122-01
LT 110-02	3.5M POST TOP Ceremonial Details	C-ES-122-02
LT 110-03	3.5M POST TOP Ceremonial Base	C-ES-122-03
LT 120-01	3.5M POST TOP Streets/Park Lands	C-ES-121-01
LT 130-01	3.5M POST TOP Heritage	C-ES-123-01
LT 221-01	WALL MOUNTED	C-ES-160-01
LT 221-02	WALL MOUNTED Cable Protection	C-ES-160-02
LT 300-00	UNDERGROUND ELECTRICAL ENCLOSURE Pit	C-ES-133-00
LT 300-01	UNDERGROUND ELECTRICAL ENCLOSURE Cover	C-ES-133-01
LT 310-01	UNDERGROUND ELECTRICAL ENCLOSURE Type 1	C-ES-133-02
LT 310-02	UNDERGROUND ELECTRICAL ENCLOSURE Type 2	C-ES-133-03
LT 310-03	UNDERGROUND ELECTRICAL ENCLOSURE Internal Board Options	C-ES-133-04
LT 400-01	6.5 M COLUMN	C-ES-102-01
LT 400-02	6.5 M COLUMN with Traffic Light Attachments	C-ES-102-02
LT 410-01	9.0 M COLUMN	C-ES-103-01
LT 410-02	9.0 M COLUMN with Traffic Light Attachments	C-ES-103-02
LT 420-01	10.5 M COLUMN	C-ES-104-01
LT 420-02	10.5 M COLUMN with Traffic Light Attachments	C-ES-104-02
LT 421-01	10.5 M COLUMN Double Outreach	C-ES-105-01
LT 700-01	SINGLE LIGHTING COLUMN Direct Supply from ETSA Pit	C-ES-130-01
LT 700-02	MULTIPLE LIGHTING COLUMNS	C-ES-131-01
LT 800-01	UNDERGROUNDING OF PRIVATE PROPERTIES Plan and Schedule	C-ES-150-01
LT 800-02	UNDERGROUNDING OF PRIVATE PROPERTIES Details	C-ES-150-02
LT 900-01	TRENCHES Streets	C-ES-140-01
LT 900-02	TRENCHES Park Lands	C-ES-141-01
LT 900-03	BORED TRENCHES Park Lands	C-ES-141-02

DESIGNED PK/TL	CHECKED TL		CONSTRUCTION STANDARD Lighting and Electrical DRAWING INDEX		
DRAWN JR/JB	CERTIFIED RS				
DATE 05/2001					
SCALE N.T.S.					
DRWG No. C-ES-001-00	© COPYRIGHT This document produced by City of Adelaide shall not copied without written consent.			STANDARD NUMBER	SHEET No.
				LT 001	01

## DESCRIPTION



## EXISTING

(THIN PEN - 0.18mm)

## PROPOSED

(THICK PEN - 0.5mm)

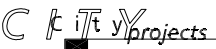

ETSA OVERHEAD CABLES		
ETSA UNDERGROUND SERVICE DUCTS/CABLES		
ACC SPARE CONDUIT		
ACC PUBLIC LIGHTING CONDUIT		
CONSUMER SERVICE CONDUIT		
COMMON TRENCH CONDUITS		
ACC TRAFFIC SIGNAL DUCT		
PRIVATE COMMUNICATIONS CARRIER		
TELSTRA		
GAS		
SEWER		
WATER		
KERB LINE		
STOBIE POLE		
STOBIE POLE TO BE REMOVED		
CONSUMER METER SWITCHBOARD	CMS	CMS
ETSA SERVICE FUSE ENCLOSURE	F	F
ETSA SERVICE PIT	SP	SP
ETSA FUSE PIT	ETSA	ETSA
ACC FUSE PIT	ACC	ACC
ACC FUSE PIT WITH EARTH STAKE	ACC	ACC(E)
ACC UNDERGROUND PUBLIC LIGHTING SWITCHBOARD	ACC	MSB
3.5M POST TOP LANTERN	PT	PT
LIGHTING COLUMN (6.5M, 9.0M OR 10.5M AS NOTED)		
LIGHTING COLUMN (WITH COLUMN MOUNTED SWITCHBOARD)	SB	SB
LIGHTING COLUMN - DOUBLE OUTREACH		
LIGHTING COLUMN TO BE REMOVED		
ABOVE GROUND LEVEL	A.G.L.	A.G.L.

DESIGNED PK/TL	CHECKED TL	<div></div>	CONSTRUCTION STANDARD Lighting and Electrical ELECTRICAL LEGEND		<div></div>	
DRAWN JR/JB	CERTIFIED RS					
<div></div>	DATE 05/2001					
	SCALE N.T.S.					
	DRWG No. C-ES-001-01	© COPYRIGHT This document produced by City of Adelaide shall not copied without written consent.			STANDARD NUMBER LT 002	SHEET No. 01

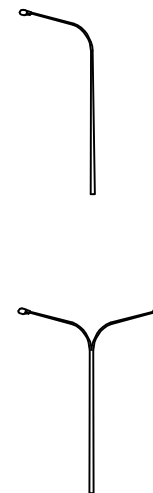
CODE NO.	MOUNTING HEIGHT (metres)	FOOTING TYPE (G)round or (F)lange	OUTREACH ARM		COLUMN TYPE	(B)ANNER	(T)RAFFIC SIGNAL (lugs)	COLUMN STANDARD REFERENCE	COLUMN DRAWING REFERENCE
			(metres)	(S)ingle or (D)ouble					
3.5/G 3.5/G 3.5/G 3.5/G	3.5 3.5 3.5 3.5	G G G G			RIGID RIGID RIGID RIGID			LT120-01 [Option A] LT120-01 [Option B] LT130-01 LT110-01 LT110-02 LT110-03	C-ES-121-01 [Option A] C-ES-121-01 [Option B] C-ES-123-01 C-ES-122-01 C-ES-122-02 C-ES-122-03
6.5/G/0.5/S 6.5/G/0.5/S/T	6.5 6.5	G G	0.5 0.5	S S	RIGID RIGID		T	LT400-01 LT400-02	C-ES-102-01 C-ES-102-02
9.0/G/2.0/S 9.0/G/2.0/S/B 9.0/G/2.0/S/T 9.0/F/2.0/S/T 9.0/G/2.0/S/B/T 9.0/F/2.0/S/B/T	9.0 9.0 9.0 9.0 9.0 9.0	G G G F G F	2.0 2.0 2.0 2.0 2.0 2.0	S S S S S S	RIGID RIGID RIGID IMPACT ABSORBING RIGID IMPACT ABSORBING	B    B B	   T T T T	LT410-01 LT410-01 LT410-02 LT410-02 LT410-01 LT410-01	C-ES-103-01 C-ES-103-01 C-ES-103-02 C-ES-103-02 C-ES-103-01 C-ES-103-01
9.0/G/3.0/S 9.0/G/3.0/S/B 9.0/G/3.0/S/T 9.0/F/3.0/S/T 9.0/G/3.0/S/B/T 9.0/F/3.0/S/B/T	9.0 9.0 9.0 9.0 9.0 9.0	G G G F G F	3.0 3.0 3.0 3.0 3.0 3.0	S S S S S S	RIGID RIGID RIGID IMPACT ABSORBING RIGID IMPACT ABSORBING	B    B B	   T T T T	LT410-01 LT410-01 LT410-02 LT410-02 LT410-01 LT410-01	C-ES-103-01 C-ES-103-01 C-ES-103-02 C-ES-103-02 C-ES-103-01 C-ES-103-01
9.0/G/4.5/S 9.0/G/4.5/S/B 9.0/G/4.5/S/T 9.0/F/4.5/S/T 9.0/G/4.5/S/B/T 9.0/F/4.5/S/B/T	9.0 9.0 9.0 9.0 9.0 9.0	G G G F G F	4.5 4.5 4.5 4.5 4.5 4.5	S S S S S S	RIGID RIGID RIGID IMPACT ABSORBING RIGID IMPACT ABSORBING	B    B B	   T T T T	LT410-01 LT410-01 LT410-02 LT410-02 LT410-01 LT410-01	C-ES-103-01 C-ES-103-01 C-ES-103-02 C-ES-103-02 C-ES-103-01 C-ES-103-01





NOTE: FOR FOOTING DETAILS REFER STANDARD LT020-01 (Drawing No. C-ES-101-01).

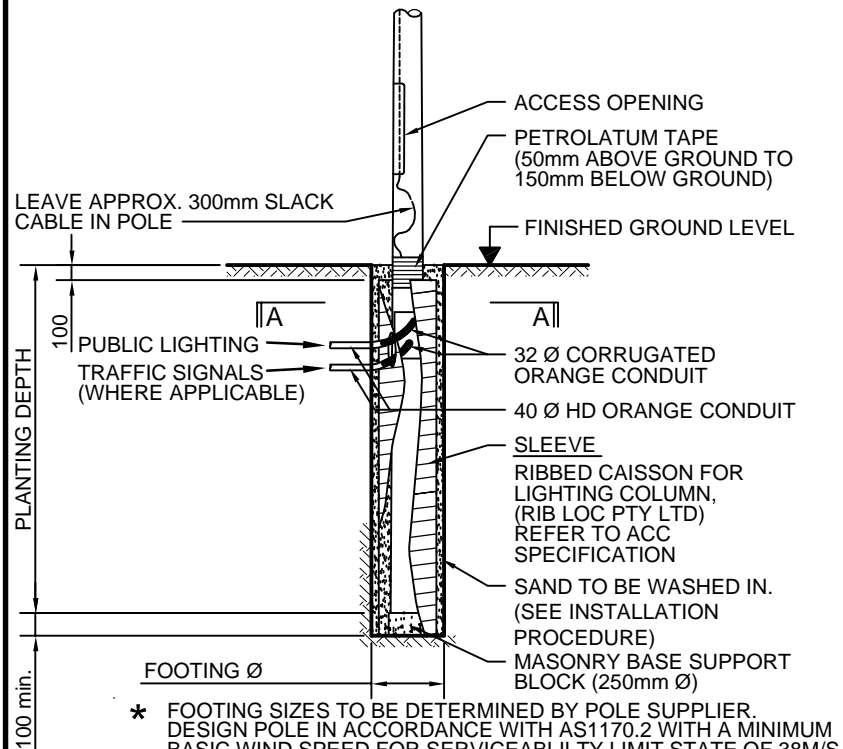
DESIGNED TL	CHECKED TL		© COPYRIGHT This document produced by City of Adelaide shall not copied without written consent.	CONSTRUCTION STANDARD Lighting and Electrical COLUMN OPTIONS		
DRAWN JR/JB/TL	CERTIFIED RS					
	DATE 05/2001					STANDARD NUMBER SHEET No.
	SCALE N.T.S.					
	DRWG No. C-ES-100-01					LT 010 01

CODE NO.	MOUNTING HEIGHT (metres)	FOOTING TYPE Ground or Flange	OUTREACH ARM		COLUMN TYPE	BANNER	TRAFFIC SIGNAL (lugs)	COLUMN STANDARD REFERENCE	COLUMN DRAWING REFERENCE
			(metres)	Single or Double					
10.5/G/2.0/S	10.5	G	2.0	S	RIGID	B	T	LT410-01	C-ES-103-01
10.5/G/2.0/S/B	10.5	G	2.0	S	RIGID			LT410-01	C-ES-103-01
10.5/G/2.0/S/T	10.5	G	2.0	S	RIGID			LT410-02	C-ES-103-02
10.5/F/2.0/S/T	10.5	F	2.0	S	IMPACT ABSORBING	B	T	LT410-02	C-ES-103-02
10.5/G/2.0/S/B/T	10.5	G	2.0	S	RIGID			LT410-01	C-ES-103-01
10.5/F/2.0/S/B/T	10.5	F	2.0	S	IMPACT ABSORBING			LT410-01	C-ES-103-01
10.5/G/3.0/S	10.5	G	3.0	S	RIGID	B	T	LT410-01	C-ES-103-01
10.5/G/3.0/S/B	10.5	G	3.0	S	RIGID			LT410-01	C-ES-103-01
10.5/G/3.0/S/T	10.5	G	3.0	S	RIGID			LT410-02	C-ES-103-02
10.5/F/3.0/S/T	10.5	F	3.0	S	IMPACT ABSORBING	B	T	LT410-02	C-ES-103-02
10.5/G/3.0/S/B/T	10.5	G	3.0	S	RIGID			LT410-01	C-ES-103-01
10.5/F/3.0/S/B/T	10.5	F	3.0	S	IMPACT ABSORBING			LT410-01	C-ES-103-01
10.5/G/4.5/S	10.5	G	4.5	S	RIGID	B	T	LT410-01	C-ES-103-01
10.5/G/4.5/S/B	10.5	G	4.5	S	RIGID			LT410-01	C-ES-103-01
10.5/G/4.5/S/T	10.5	G	4.5	S	RIGID			LT410-02	C-ES-103-02
10.5/F/4.5/S/T	10.5	F	4.5	S	IMPACT ABSORBING	B	T	LT410-02	C-ES-103-02
10.5/G/4.5/S/B/T	10.5	G	4.5	S	RIGID			LT410-01	C-ES-103-01
10.5/F/4.5/S/B/T	10.5	F	4.5	S	IMPACT ABSORBING			LT410-01	C-ES-103-01
10.5/F/2.0/D	10.5	F	2.0	D	IMPACT ABSORBING			LT421-01	C-ES-105-01
10.5/F/3.0/D	10.5	F	3.0	D	IMPACT ABSORBING			LT421-01	C-ES-105-01
10.5/F/4.5/D	10.5	F	4.5	D	IMPACT ABSORBING			LT421-01	C-ES-105-01



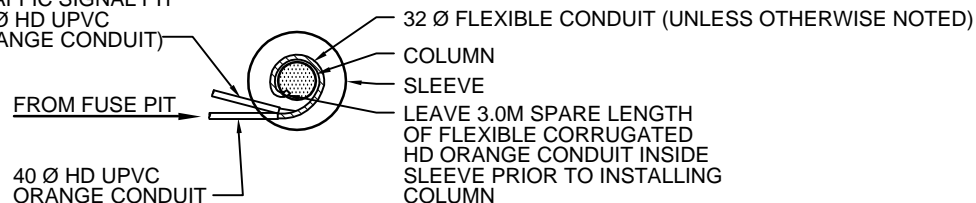
NOTE: FOR FOOTING DETAILS REFER STANDARD LT020-01 (Drawing No. C-ES-101-01).

DESIGNED TL	CHECKED TL		CONSTRUCTION STANDARD Lighting and Electrical COLUMN OPTIONS			
DRAWN JR/JB/TL	CERTIFIED RS					
	DATE 05/2001				STANDARD NUMBER	SHEET No.
	SCALE N.T.S.					
	DRWG No. C-ES-100-02	© COPYRIGHT This document produced by City of Adelaide shall not copied without written consent.			LT 010	02



### IN-GROUND COLUMN FOOTING (TYPICAL)

(WHERE APPLICABLE FROM TRAFFIC SIGNAL PIT  
40 Ø HD UPVC ORANGE CONDUIT)



### SECTION A-A

#### ANTI-CORROSION COATING

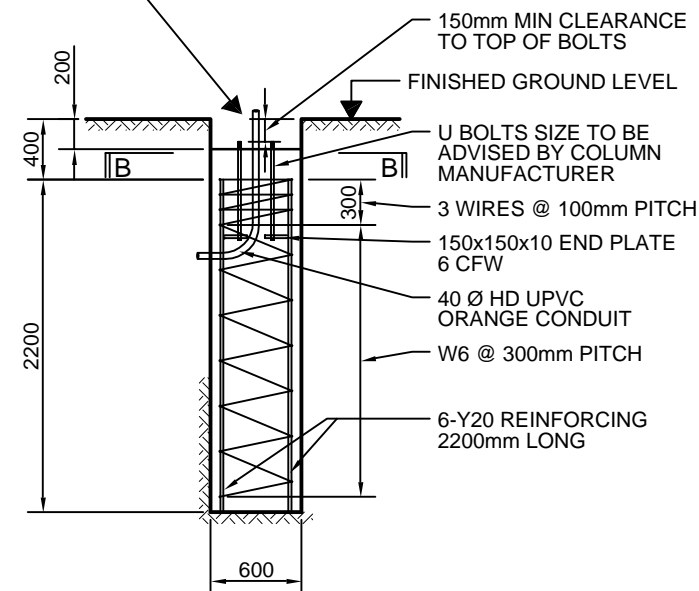
THE RAG BOLTS AND COLUMN/BASE PLATE (TOP & BOTTOM) SHALL BE PAINTED TO 100mm A.F.G.L. WITH 'INTERPLUS 356' (FROM INTERNATIONAL PROTECTIVE COATINGS, PREVIOUSLY TAUBMANS). SURFACE PREPARATION SHALL BE IN ACCORDANCE WITH THE MANUFACTURERS SPECIFICATIONS. (MINIMUM 250 MICRONS DRY FILM THICKNESS)

#### SAND SPECIFICATION

THE SAND TO BE SUPPLIED AND INSTALLED IN ACCORDANCE WITH THE INSTRUCTIONS BELOW, AND BE NON-PLASTIC WITH 100% PASSING A 600 MICRON SIEVE.

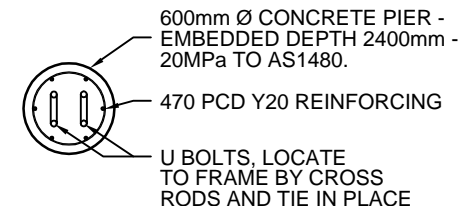
#### TYPICAL 'IN-GROUND' COLUMN INSTALLATION PROCEDURE

1. BORE HOLE PLUMB TO ACHIEVE 50mm (MIN) CLEARANCE BETWEEN SLEEVE & COLUMN.
2. SET SLEEVE INTO HOLE PLUMB, AND PROVIDE CABLE ENTRY IN APPROPRIATE LOCATION.
3. INSTALL MASONRY SUPPORT BLOCK.
4. INSTALL FLEXIBLE CORRUGATED CONDUIT(S) INTO SLEEVE.
5. PROGRESSIVELY WATER IN SPECIFIED SAND TYPE AROUND SLEEVE.
6. WRAP COLUMN WITH PETROLATUM TAPE.
7. LOWER COLUMN INTO SLEEVE AND FEED CONDUIT(S) PROGRESSIVELY INTO COLUMN.
8. POSITION COLUMN CENTRALLY, PLUMB AND PROGRESSIVELY WATER IN THE SPECIFIED SAND TYPE.



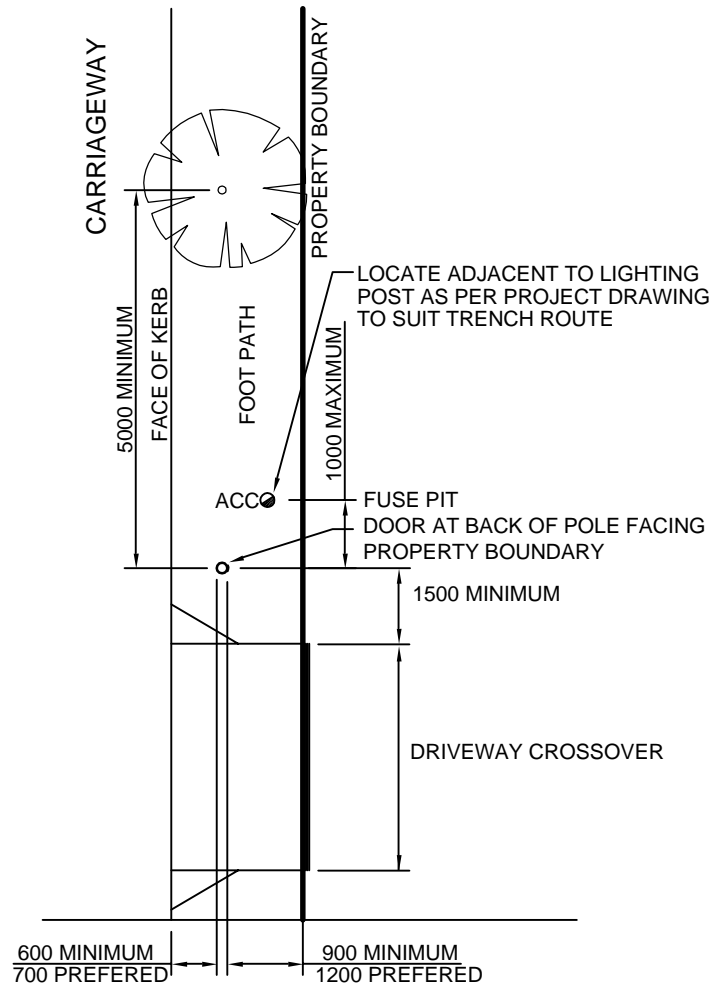
### FLANGE MOUNTED COLUMN FOOTING (TYPICAL)

REFER TO STANDARD LT421-01 (Dwg C-ES-105-01)

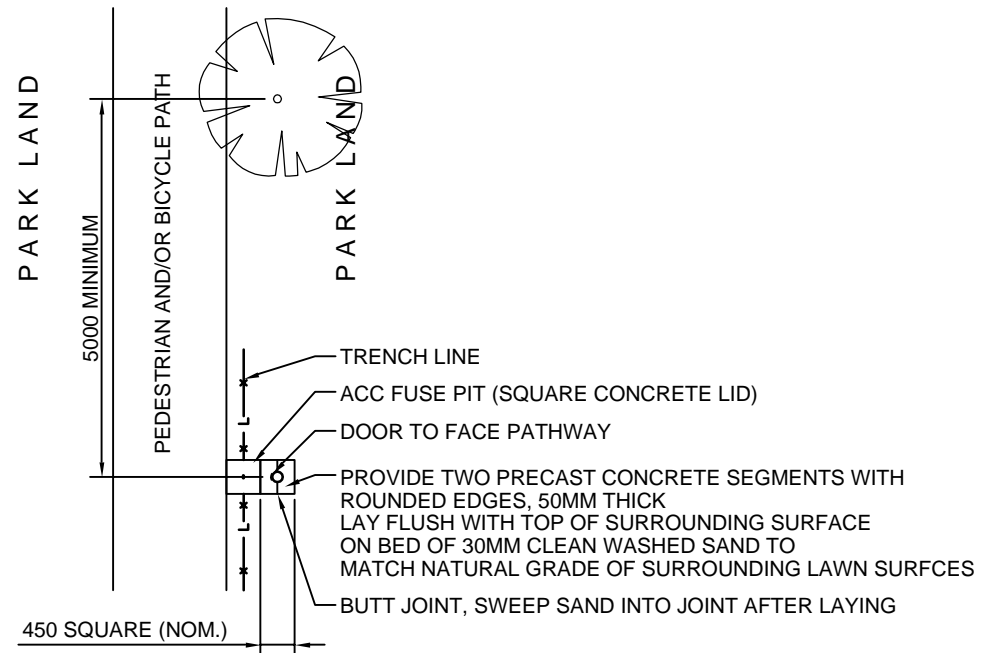


### SECTION B-B



DESIGNED TL	CHECKED TL	<p>© COPYRIGHT</p> <p>This document produced by City of Adelaide shall not copied without written consent.</p>	<p>CONSTRUCTION STANDARD</p> <p>Lighting and Electrical</p> <p>LIGHTING / TRAFFIC COLUMNS</p> <p>Footing Details</p>		<p><b>DELAIDE</b></p> <p>CITY COUNCIL</p>
DRAWN JR/JB	CERTIFIED RS				
<p><b>City Projects</b></p>	DATE 05/2001				<p>STANDARD NUMBER</p> <p>LT 020</p>
	SCALE N.T.S.				
	DRWG No. C-ES-101-01				<p>SHEET No.</p> <p>01</p>



**LOCATION OF POLE IN FOOTPATH**  
PLAN






**LOCATION OF POLE IN PARK LANDS**  
PLAN

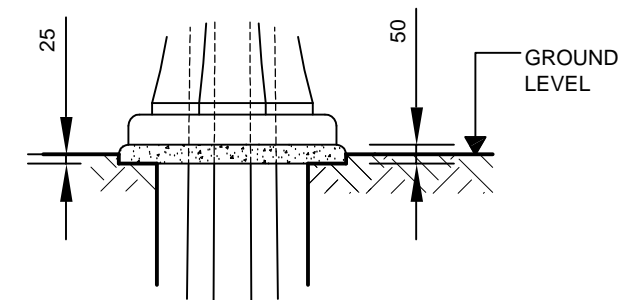
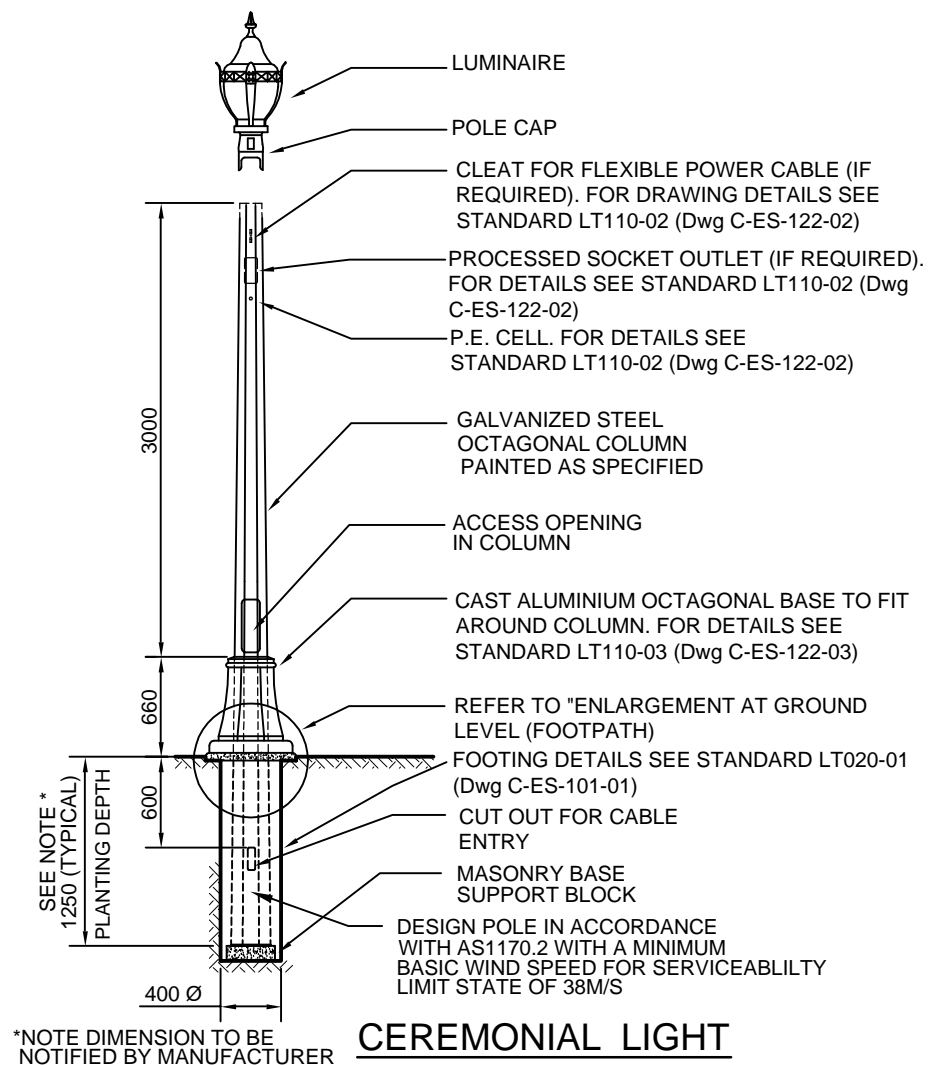
DESIGNED TL	CHECKED TL	<div></div>	CONSTRUCTION STANDARD Lighting and Electrical POST TOP Location Details Typical		<div></div>	
DRAWN JR/JB	CERTIFIED RS					
<div></div>	DATE 05/2001		<div></div>		STANDARD NUMBER	SHEET No.
	SCALE N.T.S.					
	DRWG No. C-ES-120-01					
© COPYRIGHT This document produced by City of Adelaide shall not copied without written consent.				LT 030	01	

## PLAN

## PLAN

## PLAN

DESIGNED TL	CHECKED TL	<div></div>	CONSTRUCTION STANDARD Lighting and Electrical STREET LIGHTING Location Details Typical		<div><div></div><div>STANDARD NUMBER LT 030</div></div> <div><div></div><div>SHEET No. 02</div></div>		
DRAWN JR/JB	CERTIFIED RS						
<div></div>	DATE 05/2001		<div>© COPYRIGHT This document produced by City of Adelaide shall not copied without written consent.</div>				
	SCALE N.T.S.						
	DRWG No. C-ES-120-02						



## ENLARGEMENT AT FINISHED GROUND LEVEL

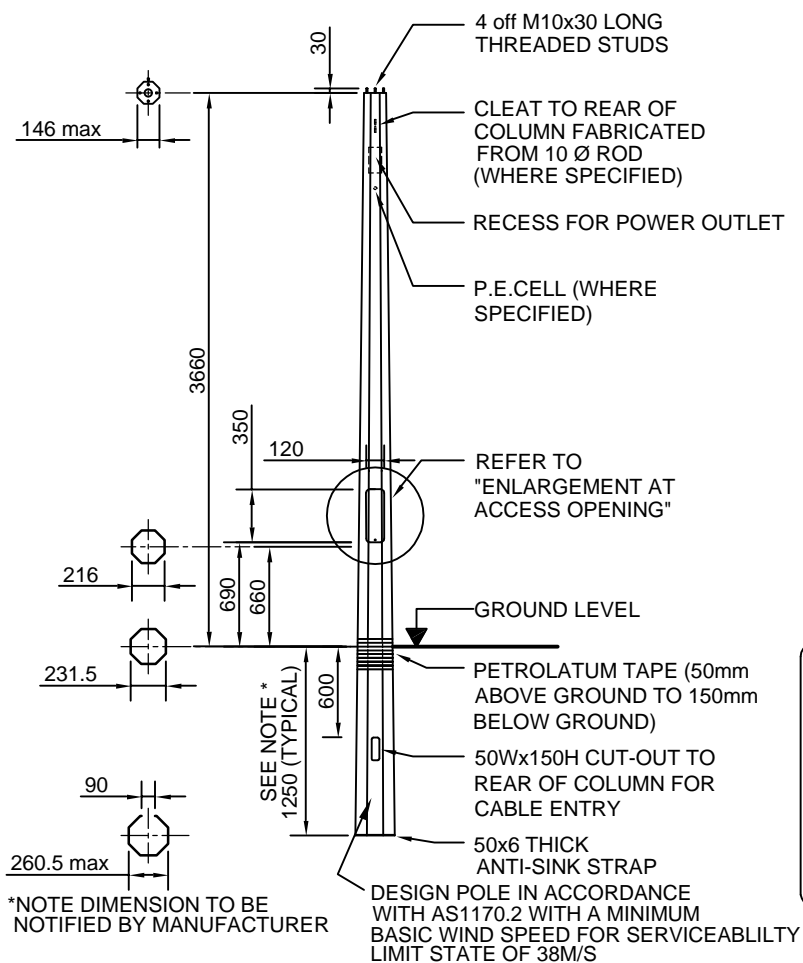
### NOTE

1. COLUMN TO CONFORM TO RELEVANT AUSTRALIAN STANDARDS AND ATTACHED ACC SPECIFICATION.
2. COLUMN SHALL BE HOT DIPPED GALVANIZED AND WET PAINTED IN ACCORDANCE WITH ATTACHED ACC SPECIFICATION.
3. PAINT FINISH - DULUX OYSTER REFER PAINTING SPECIFICATION FOR APPLICATION
4. POLE IDENTIFICATION LABEL REQUIREMENTS

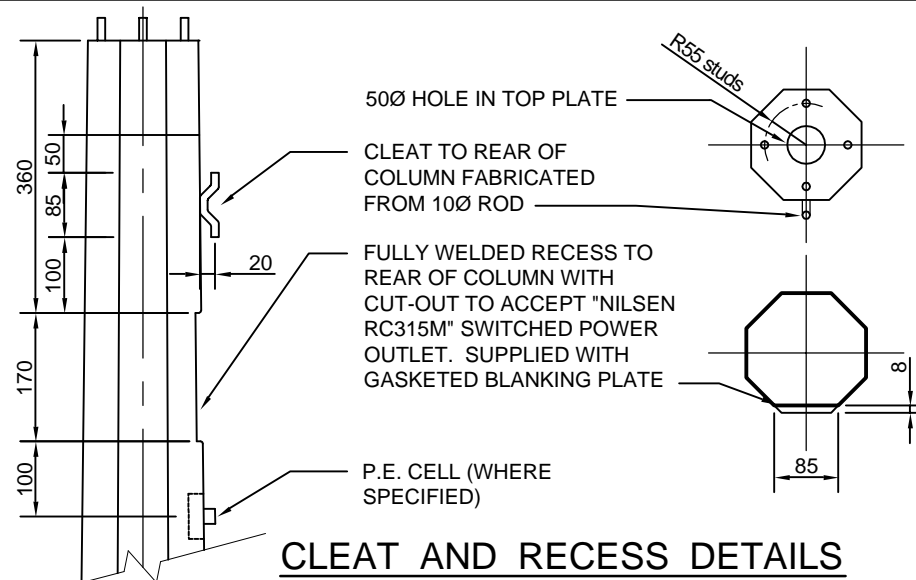
CORPORATION OF THE CITY OF ADELAIDE  
MANUFACTURER'S NAME  
CONTRACT NUMBER  
MONTH/YEAR OF MANUFACTURE

DESIGNED TL	CHECKED TL	<div><div><div>City projects</div></div><div><div>© COPYRIGHT</div><div>This document produced by City of Adelaide shall not copied without written consent.</div></div></div>	CONSTRUCTION STANDARD Lighting and Electrical 3.5M POST TOP Ceremonial Column		<div><div><div>DELAIDE</div><div>CITY COUNCIL</div></div></div>	
DRAWN JR/JB	CERTIFIED RS					
<div><div><div>City projects</div></div></div>	DATE 05/2001				STANDARD NUMBER	SHEET No.
	SCALE N.T.S.					
DRWG No. C-ES-122-01				LT 110	01	

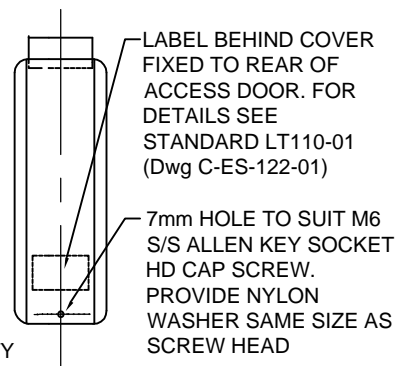




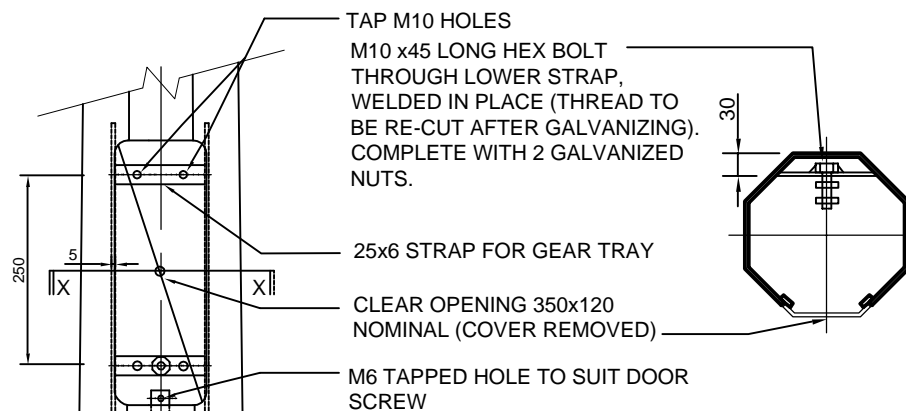
**LIGHT COLUMN**



**CLEAT AND RECESS DETAILS**



**ACCESS COVER DETAIL**



**ENLARGEMENT AT ACCESS OPENING**

DESIGNED	TL	CHECKED	TL
DRAWN	JR/JB	CERTIFIED	RS
City Projects	DATE	05/2001	
	SCALE	N.T.S.	
	DRWG No.	C-ES-122-02	

© COPYRIGHT

This document produced by City of Adelaide shall not copied without written consent.

CONSTRUCTION STANDARD

Lighting and Electrical

3.5M POST TOP

Ceremonial Details

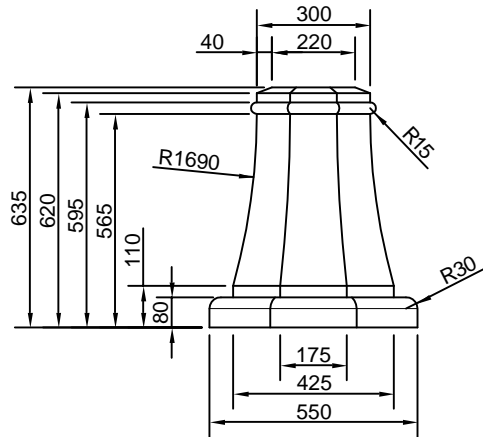


STANDARD NUMBER SHEET No.

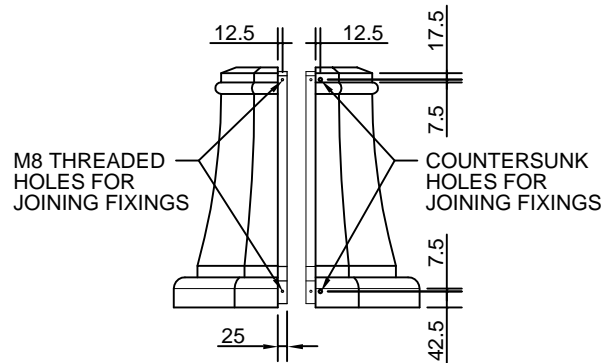
LT 110

02

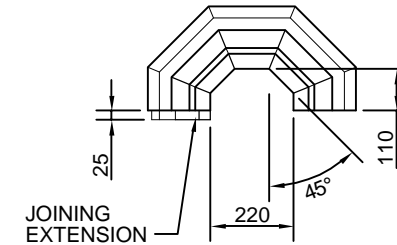
REFER TO STANDARD LT110-02 (Dwg. C-ES-122-02) FOR COLUMN DETAILS



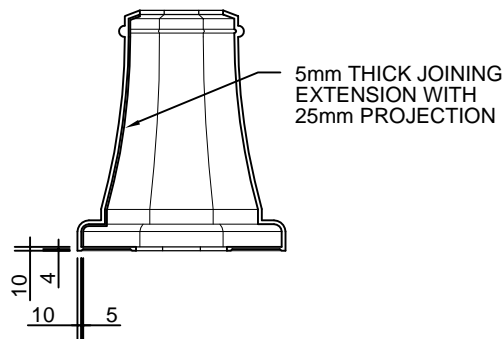
FRONT ELEVATION



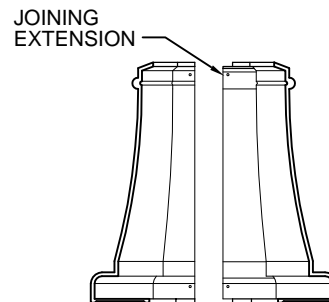
SIDE ELEVATION  
(separated)



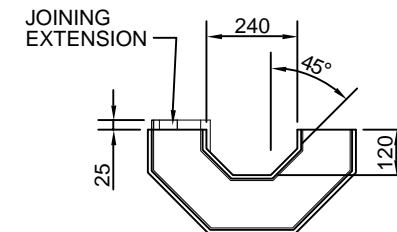
HALF TOP VIEW



INTERNAL ELEVATION

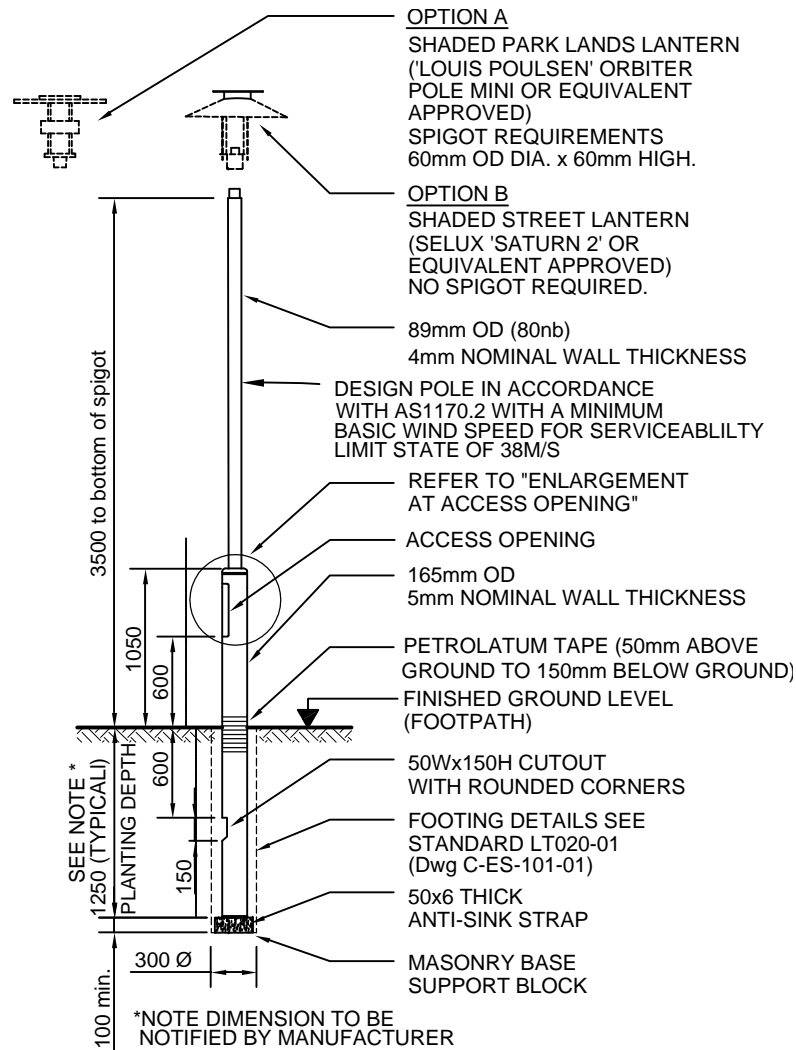


INTERNAL ELEVATION  
(sides separated)

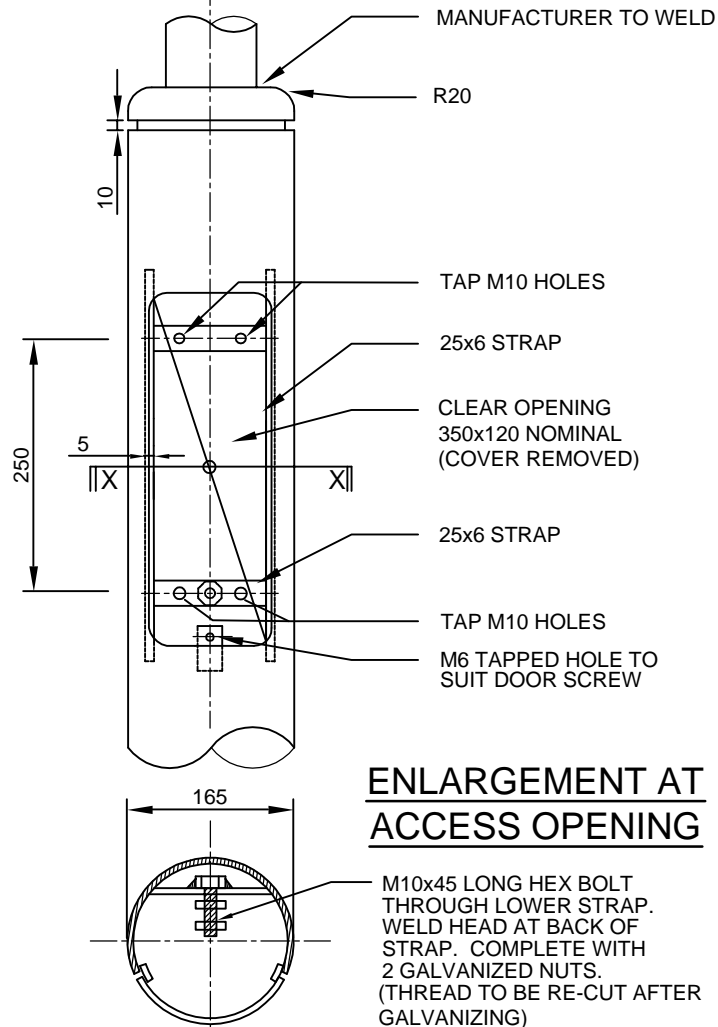


HALF BOTTOM VIEW

DESIGNED TL	CHECKED TL	<p>© COPYRIGHT</p> <p>This document produced by City of Adelaide shall not copied without written consent.</p>	<p>CONSTRUCTION STANDARD</p> <p>Lighting and Electrical</p> <p>3.5M POST TOP</p> <p>Ceremonial Base</p>		
DRAWN JR/JB	CERTIFIED RS				
	DATE 05/2001				STANDARD NUMBER
	SCALE N.T.S.				SHEET No.
DRWG No. C-ES-122-03					LT 110
					03

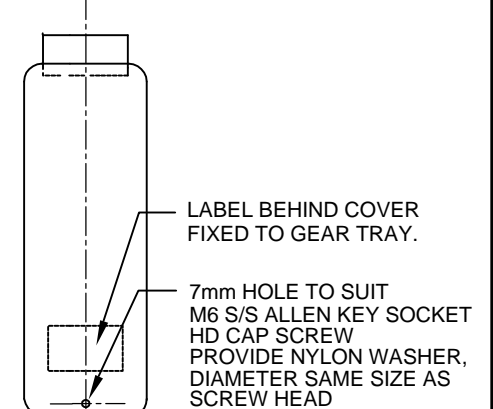


## POST TOP LANTERN



## ENLARGEMENT AT ACCESS OPENING

## SECTION X-X





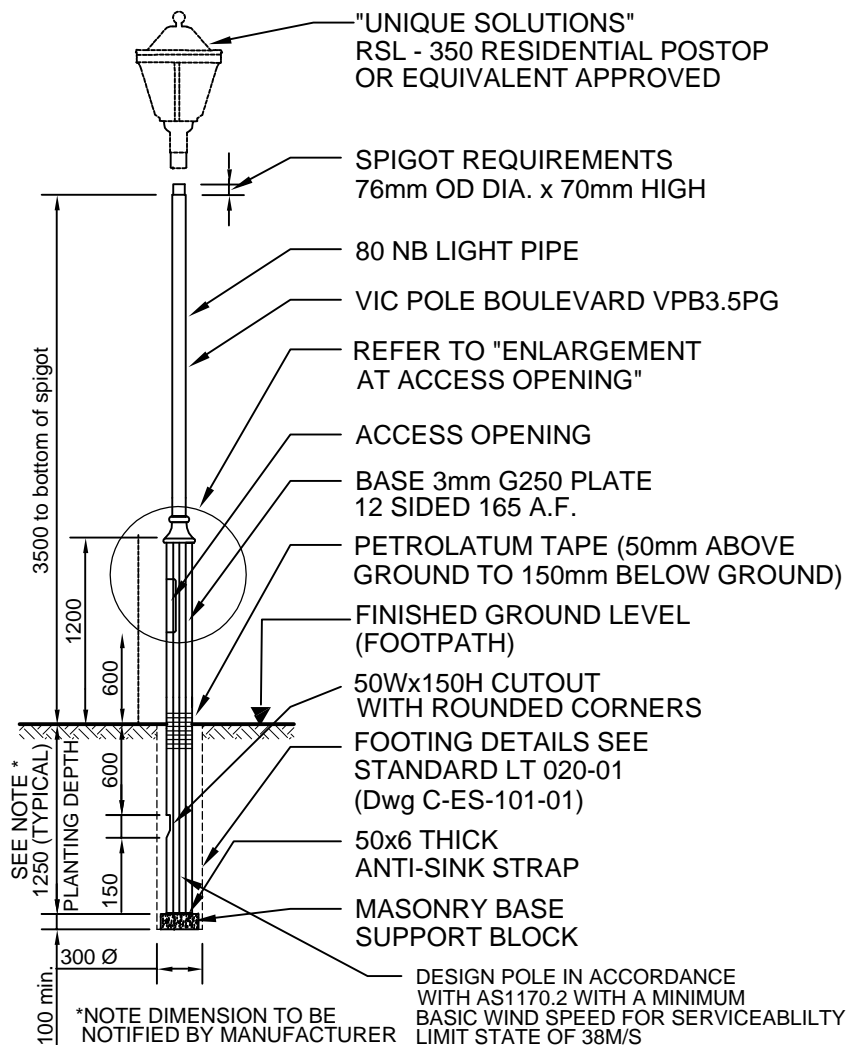
## ACCESS COVER DETAIL

### NOTE:

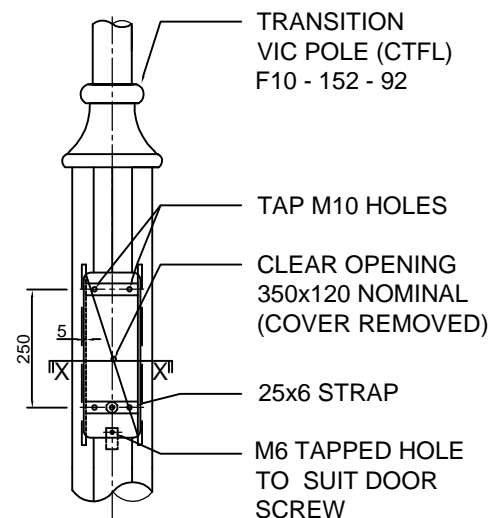
1. FOR FOOTING DETAILS REFER TO  
STANDARD LT020-01 (Dwg C-ES-101-01).
2. COLUMN TO CONFORM TO RELEVANT  
AUSTRALIAN STANDARDS AND ATTACHED  
ACC SPECIFICATION
3. COLUMN SHOULD BE HOT DIPPED  
GALVANIZED
4. PAINT FINISH  
DULUX NOTREDAME GREY  
REFER PAINTING SPECIFICATION  
FOR APPLICATION
5. LABEL REQUIREMENTS

CORPORATION OF THE CITY OF  
ADELAIDE  
MANUFACTURER'S NAME  
CONTRACT NUMBER  
MONTH/YEAR OF MANUFACTURE

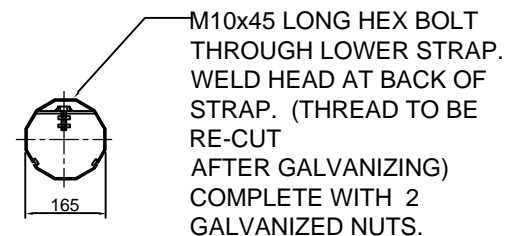
DESIGNED TL	CHECKED TL	<div>© COPYRIGHT</div> <div>This document produced by City of Adelaide shall not copied without written consent.</div>	<div>CONSTRUCTION STANDARD</div> <div>Lighting and Electrical</div> <div>3.5M POST TOP</div> <div>Streets/Park Lands</div>		<div></div>	
DRAWN JR/JB	CERTIFIED RS					
<div></div>	DATE 04/2001					
	SCALE N.T.S.					
	DRWG No. C-ES-121-01					
			STANDARD NUMBER		SHEET No.	
			LT 120		01	



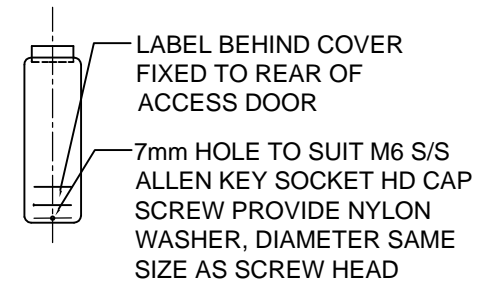
## POST TOP PARK LANDS HERITAGE



### ENLARGEMENT AT ACCESS OPENING



### SECTION X-X



### ACCESS COVER DETAIL

#### NOTE:

1. FOR FOOTING DETAILS REFER TO STANDARD LT020-01 (Dwg C-ES-101-01)
2. PAINT FINISH  
DULUX BLACK  
REFER PAINT SPECIFICATION FOR APPLICATION
3. LABEL REQUIREMENTS

CORPORATION OF THE CITY OF  
ADELAIDE  
MANUFACTURER'S NAME  
CONTRACT NUMBER  
MONTH/YEAR OF MANUFACTURE

DESIGNED TL	CHECKED TL
DRAWN JB	CERTIFIED RS
City Projects	DATE 04-2001
	SCALE N.T.S.
	DRWG No. C-ES-123-01

© COPYRIGHT

This document produced by City of Adelaide shall not copied without written consent.

### CONSTRUCTION STANDARD

Lighting and Electrical

3.5M POST TOP

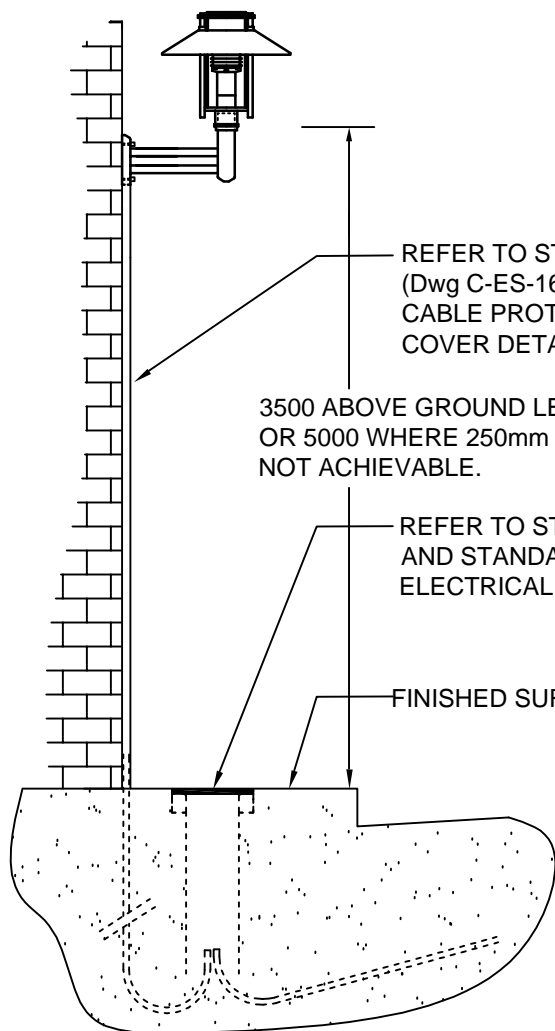
Heritage



STANDARD NUMBER SHEET No.

LT 130

01

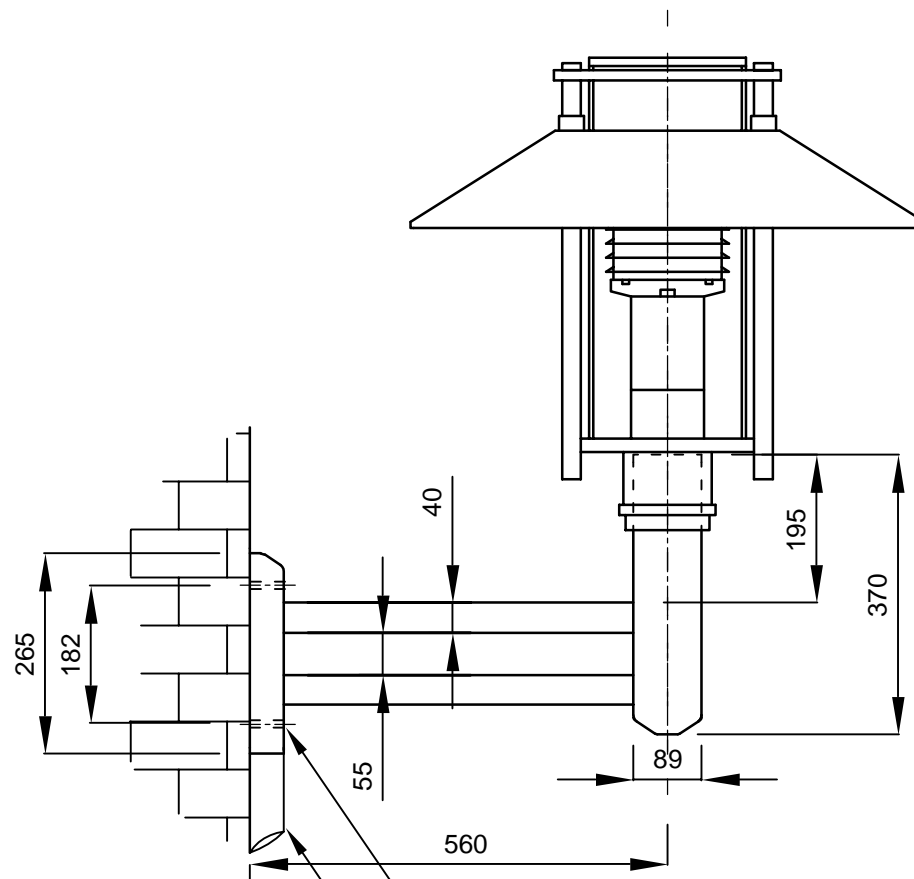


REFER TO STANDARD LT221-02  
(Dwg C-ES-160-02) FOR SUPPLY  
CABLE PROTECTION  
COVER DETAILS

3500 ABOVE GROUND LEVEL TYPICAL  
OR 5000 WHERE 250mm CLEARANCE  
NOT ACHIEVABLE.


REFER TO STANDARD LT300-01 (Dwg C-ES-133-01)  
AND STANDARD LT300-02 (Dwg C-ES-133-02) FOR  
ELECTRICAL SUPPLY DETAILS

FINISHED SURFACE



WALL FIXINGS - M8x100  
DEEP CHEMICAL ANCHORS

SUPPLY CABLE PROTECTION  
COVER SEE STANDARD LT300-02  
(Dwg C-ES-160-02)

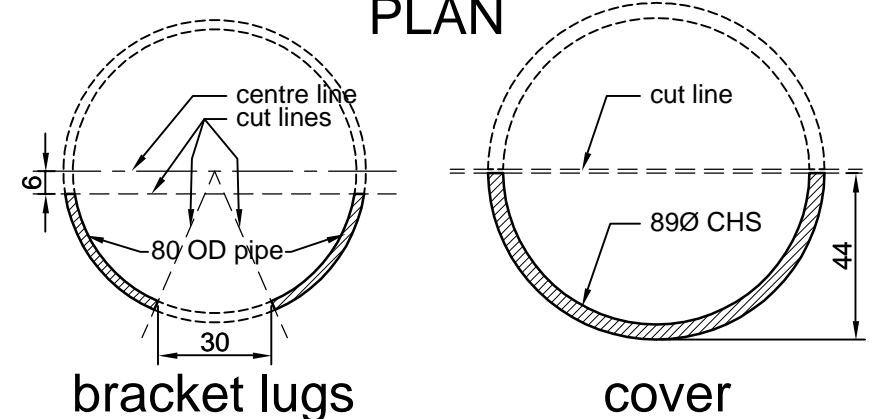
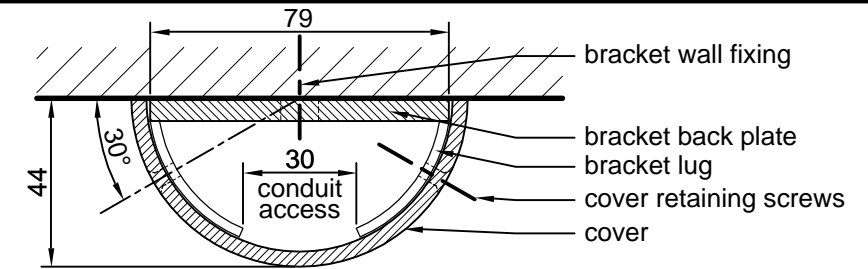
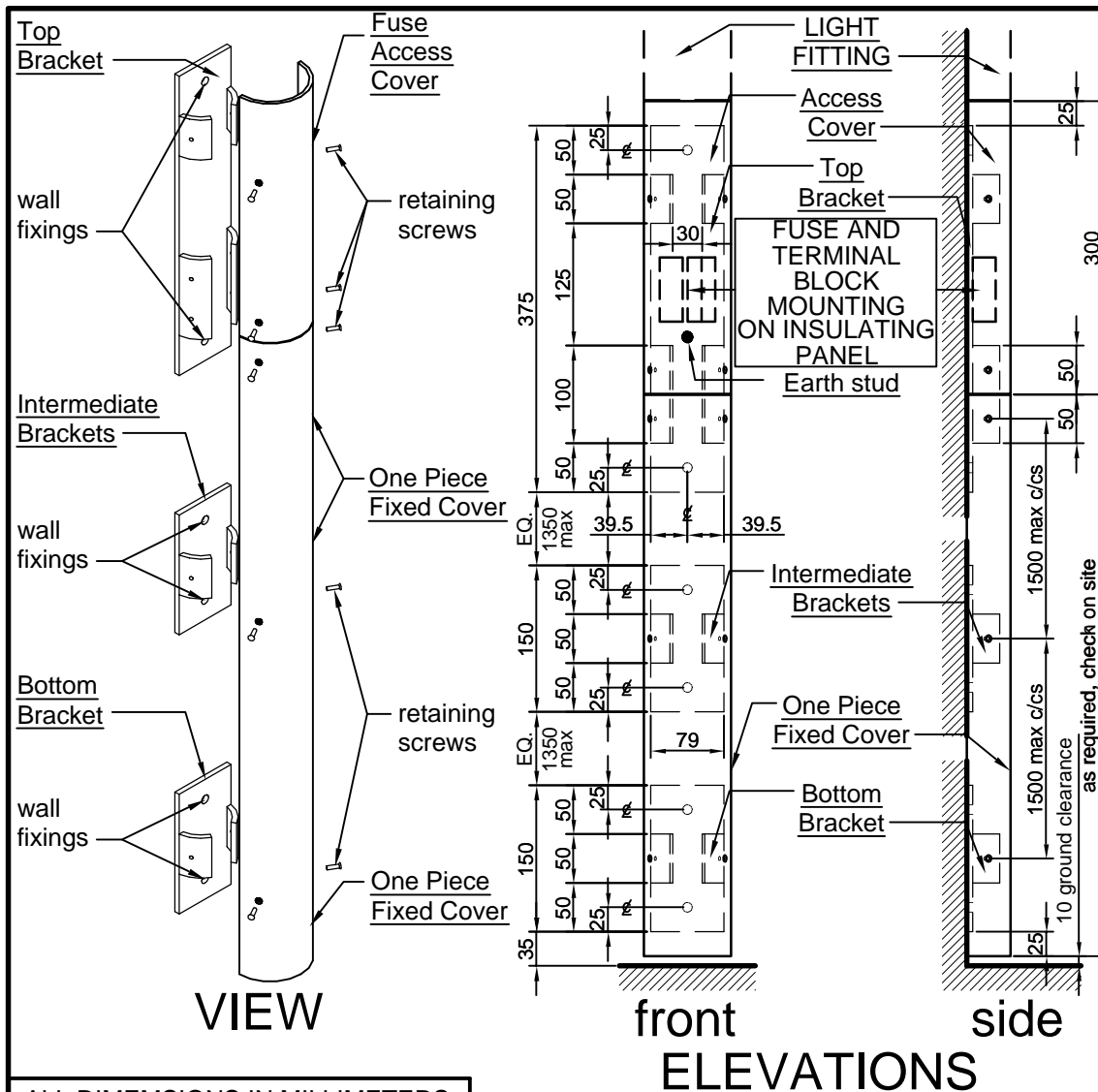
DESIGNED	TL	CHECKED	TL
DRAWN	JB	CERTIFIED	RS
	DATE	04/2001	
	SCALE	N.T.S.	
	DRWG No.	C-ES-160-01	

© COPYRIGHT  
This document produced by City of Adelaide shall not copied without written consent.

CONSTRUCTION STANDARD  
Lighting and Electrical  
WALL MOUNTED



STANDARD NUMBER	SHEET No.
LT 221	01



### COMPONENTS

- Top Bracket** - 79 x 6 x 375 plate, with 50 deep lugs and 100 deep lugs. Bracket drilled for wall fixing bolts, Galvanised finish.
- Intermediate and Bottom Brackets** - 79 x 6 x 150 plate, with 50 deep lugs. Bracket drilled for wall fixing bolts. Galvanised finish.
- Bracket Lugs** - Fabricated from 80 OD pipe, welded to bracket plate, to suit close fit to cover. Drilled and tapped for M4 cover stainless steel retaining screws. Galvanised finish.
- Wall Fixings** - M8 x 100 deep chemical anchors.
- Cover** - Fabricated from 89Ø CHS (4 wall thickness), cut in half, drilled and countersunk for M4 countersunk stainless steel cover retaining screws. Finished to match light fitting.

### ALL DIMENSIONS IN MILLIMETERS.

DESIGNED PR/TL	CHECKED TL
DRAWN JR/JB	CERTIFIED RS
DATE 05/2001	
SCALE N.T.S.	
DRWG No. C-ES-160-02	

© COPYRIGHT

This document produced by City of Adelaide shall not copied without written consent.

### CONSTRUCTION STANDARD

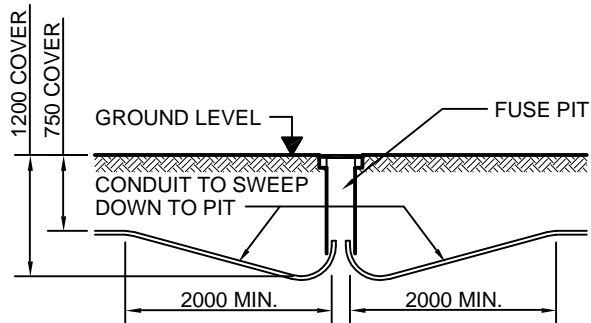
Lighting and Electrical  
WALL MOUNTED  
Cable Protection



STANDARD NUMBER SHEET No.

LT 221

02



### CONDUIT ROUTE IN FOOTPATH

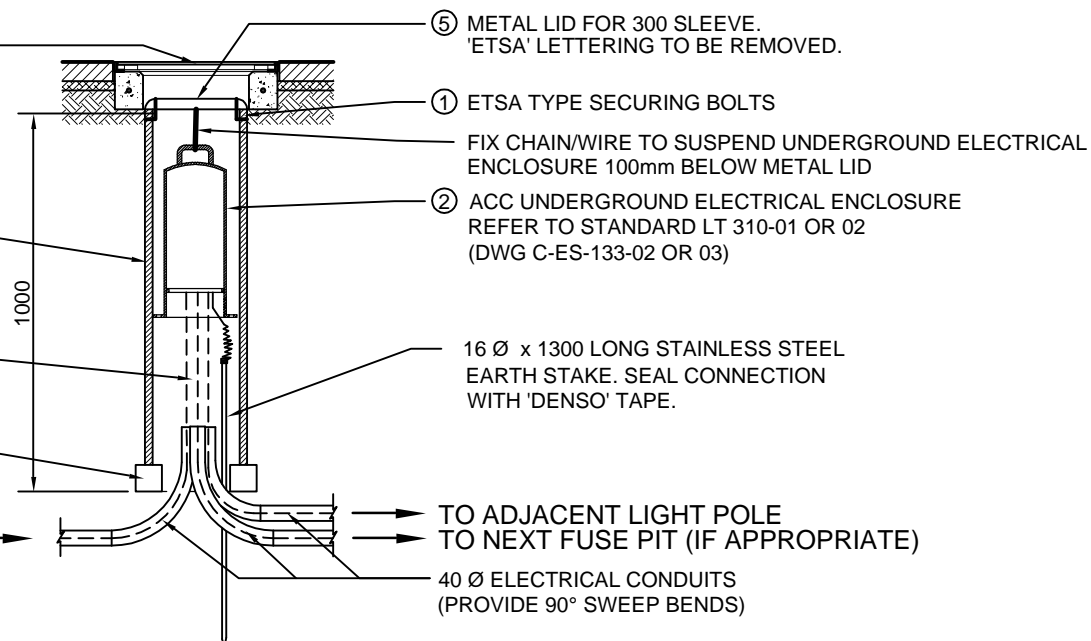
ITEM NO.	STOCK NO.	DESCRIPTION	SUPPLIER
①	RA 5473	SECURING BOLTS FOR METAL COVER	ETSA
②		UNDERGROUND ELECTRICAL ENCLOSURE	
③		UNDERGROUND ELECTRICAL ENCLOSURE COVER	
④	RA 5487	225 Ø NOM. FIBRE CEMENT SLEEVE	ETSA
⑤	RA 5476	METAL LID FOR 300 Ø SLEEVE	ETSA

③ ACC UNDERGROUND ELECTRICAL ENCLOSURE COVER REFER TO STANDARD LT 300-01 (DWG C-ES-133-01)



④ 225 Ø NOM. ETSA TYPE FIBRE CEMENT SLEEVE

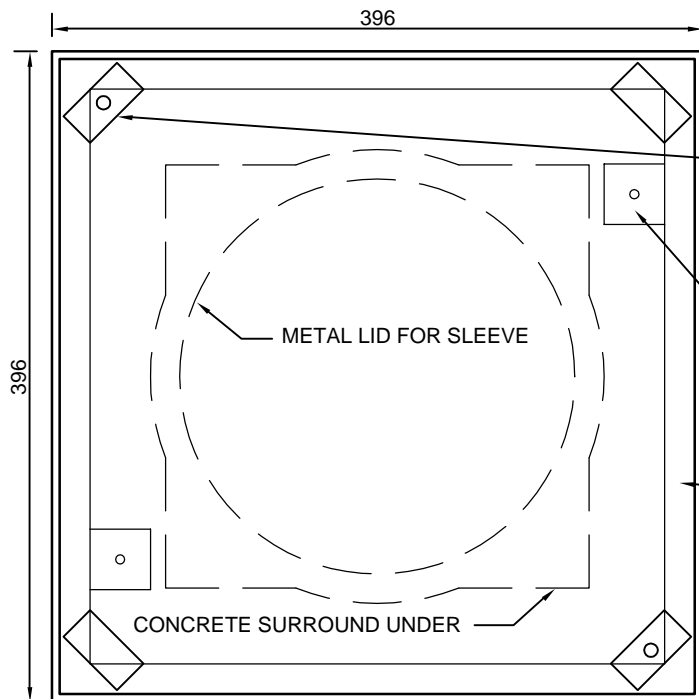
PROVIDE APPROX. 1.0M SLACK CABLE  
CONCRETE BLOCKS OR 100mm QUARRY RUBBLE TO SUPPORT SLEEVE

FROM ACC PUBLIC LIGHTING OR ETSA UTILITIES SERVICE POINT (AS APPROPRIATE).



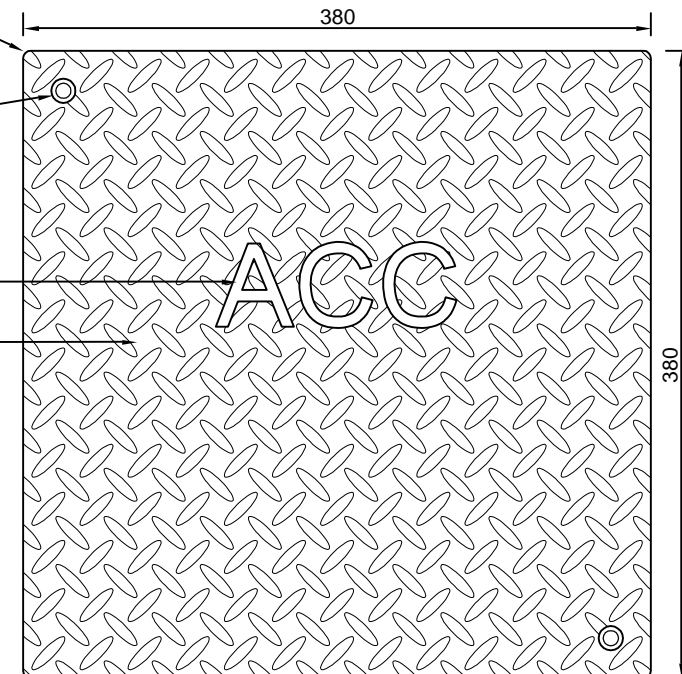
### SECTION

DESIGNED TL	CHECKED TL	<div></div>	CONSTRUCTION STANDARD Lighting and Electrical UNDERGROUND ELECTRICAL ENCLOSURE Pit		<div></div>	
DRAWN TL/BB/JB	CERTIFIED RS					
<div></div>	DATE 01/2002				STANDARD NUMBER	SHEET No.
	SCALE N.T.S.					
DRWG No. C-ES-133-00		© COPYRIGHT This document produced by City of Adelaide shall not copied without written consent.			LT 300	00

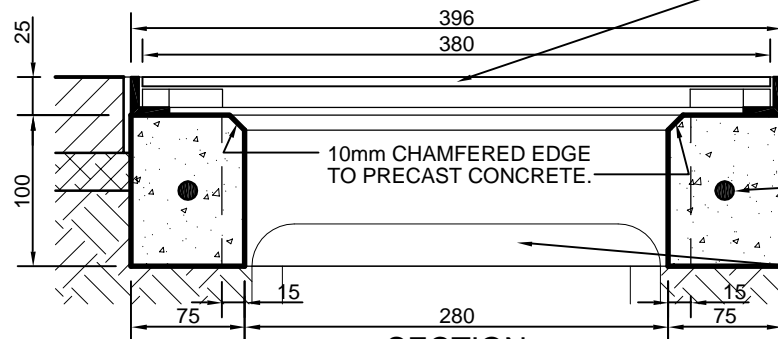


**PLAN - FRAME**

- 5mm RADIUS CORNER.
- COUNTERSUNK HOLES IN OPPOSITE CORNERS FOR 10 Ø BRASS COUNTERSUNK SLOTTED HEAD SCREWS.
- 4 no. 50 x 25 x 12 MILD STEEL SPACER BLOCKS WELDED TO ANGLE. (2 no. DRILLED AND TAPPED FOR 10Ø SCREWS).
- 55mm HIGH LASER CUT LETTERING. (1mm DEPTH).
- 6mm MILD STEEL CHEQUER PLATE COVER.
- 2 no. 40 x 40 x 5 MILD STEEL PLATES WELDED TO ANGLE. DRILL FOR 6mm 'DYNABOLT' FIXING TO PLINTH.
- 25 x 25 x 5 MILD STEEL ANGLE PERIMETER FRAME.



**PLAN - COVER**





**SECTION**

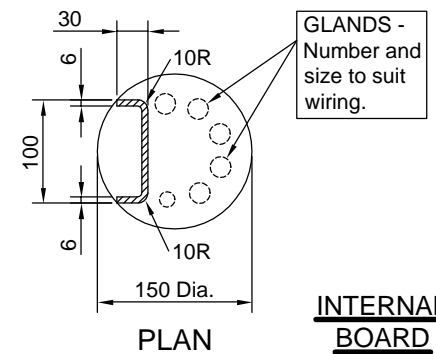
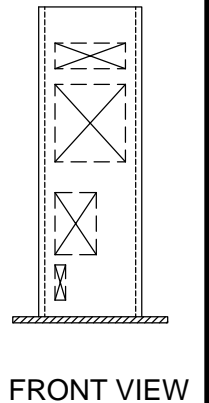
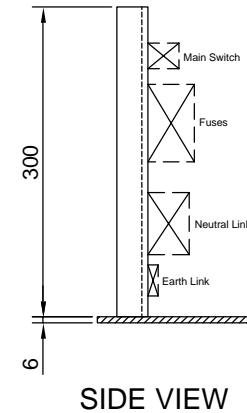
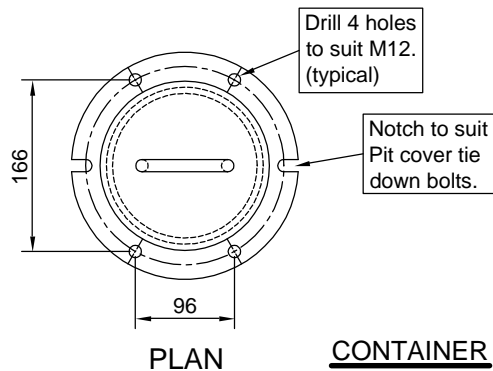
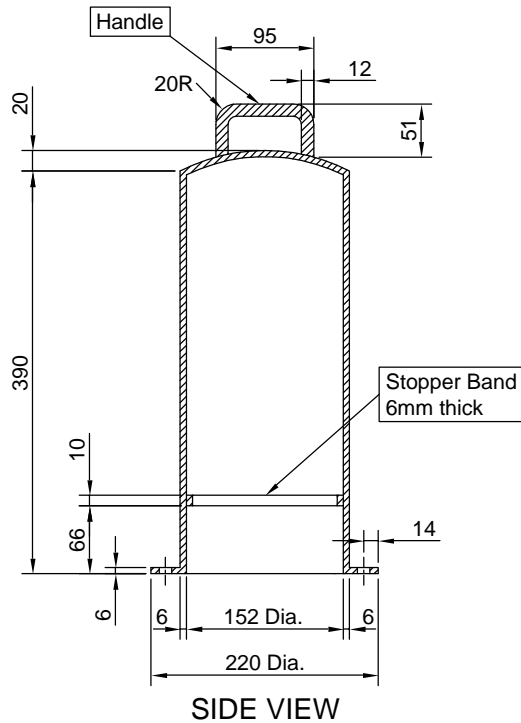
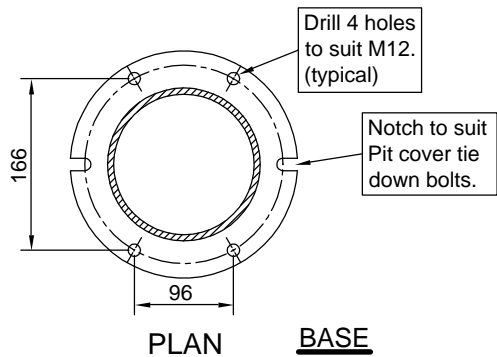
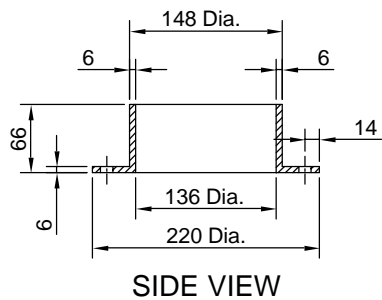
- COVER.
- FRAME.
- GROUND LEVEL.
- PAVING.
- PAVING BED.
- 100 x 75 PRECAST CONCRETE PLINTH/SURROUND TO PIT, REINFORCED WITH 1 Y12 BAR CENTRALLY.
- METAL LID FOR SLEEVE.
- REFER "BACK FILLING OF ROADWAY TRENCH" IN THE ACC "SPECIFICATION FOR EXCAVATION WORK IN ROADS, FOOTPATHS AND PARK LANDS".

**NOTE**

1. ALL STEEL WORK TO BE HOT DIP GALVANISED AFTER FABRICATION
2. ALL SCREW THREADS TO BE SUITABLY LUBRICATED.

DESIGNED TL	CHECKED TL	<div>© COPYRIGHT</div> <div>This document produced by City of Adelaide shall not copied without written consent.</div>	<div>CONSTRUCTION STANDARD</div> <div>Lighting and Electrical</div> <div>UNDERGROUND ELECTRICAL ENCLOSURE</div> <div>Cover</div>		<div></div>	
DRAWN JR/JB	CERTIFIED RS					
	DATE 05/2001		<div>STANDARD NUMBER</div> <div>LT 300</div>		<div>SHEET No.</div> <div>01</div>	
	SCALE N.T.S.					
	DRWG No. C-ES-133-01					





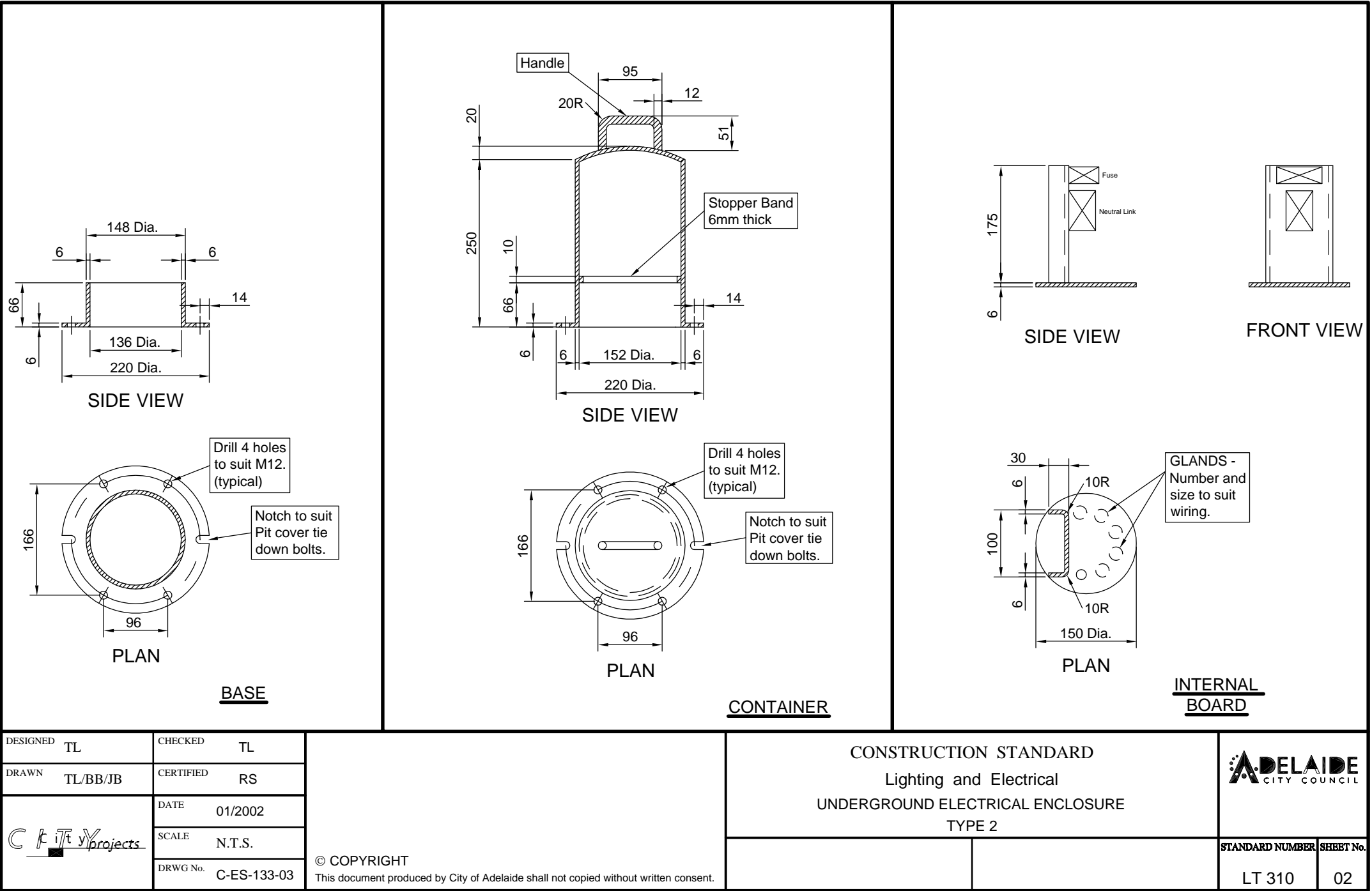
DESIGNED TL	CHECKED TL
DRAWN BB	CERTIFIED RS
City Projects	DATE 01/2002
	SCALE N.T.S.
	DRWG No. C-ES-133-02

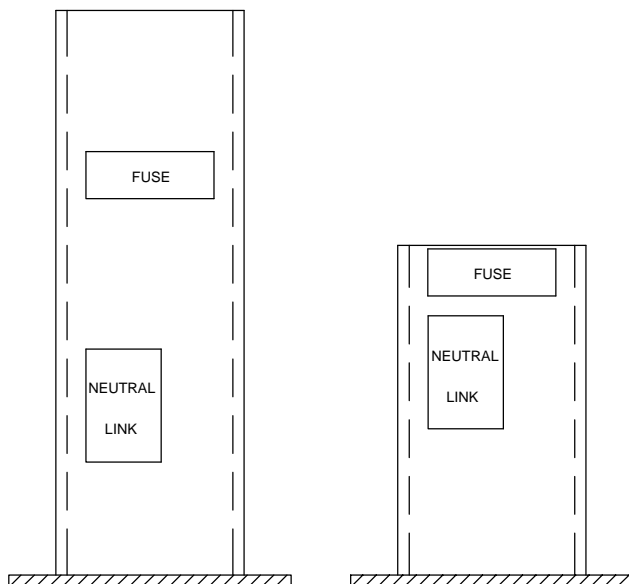
© COPYRIGHT  
This document produced by City of Adelaide shall not copied without written consent.

CONSTRUCTION STANDARD  
Lighting and Electrical  
UNDERGROUND ELECTRICAL ENCLOSURE  
TYPE 1



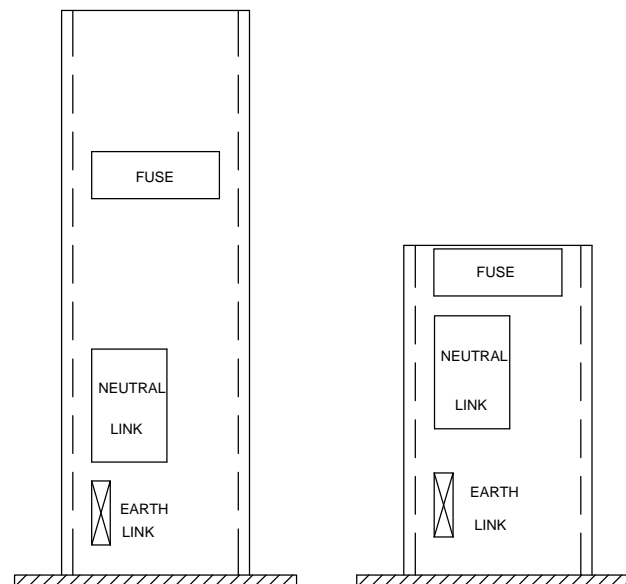
STANDARD NUMBER	SHEET No.
LT 310	01





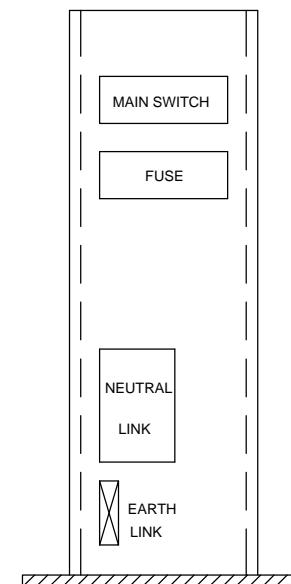
## ACC ADAPTABLE FUSE ENCLOSURE

SEE DRAWING LT700 SHEET 01



## ACC FUSE PIT

SEE DRAWING LT700 SHEET 02

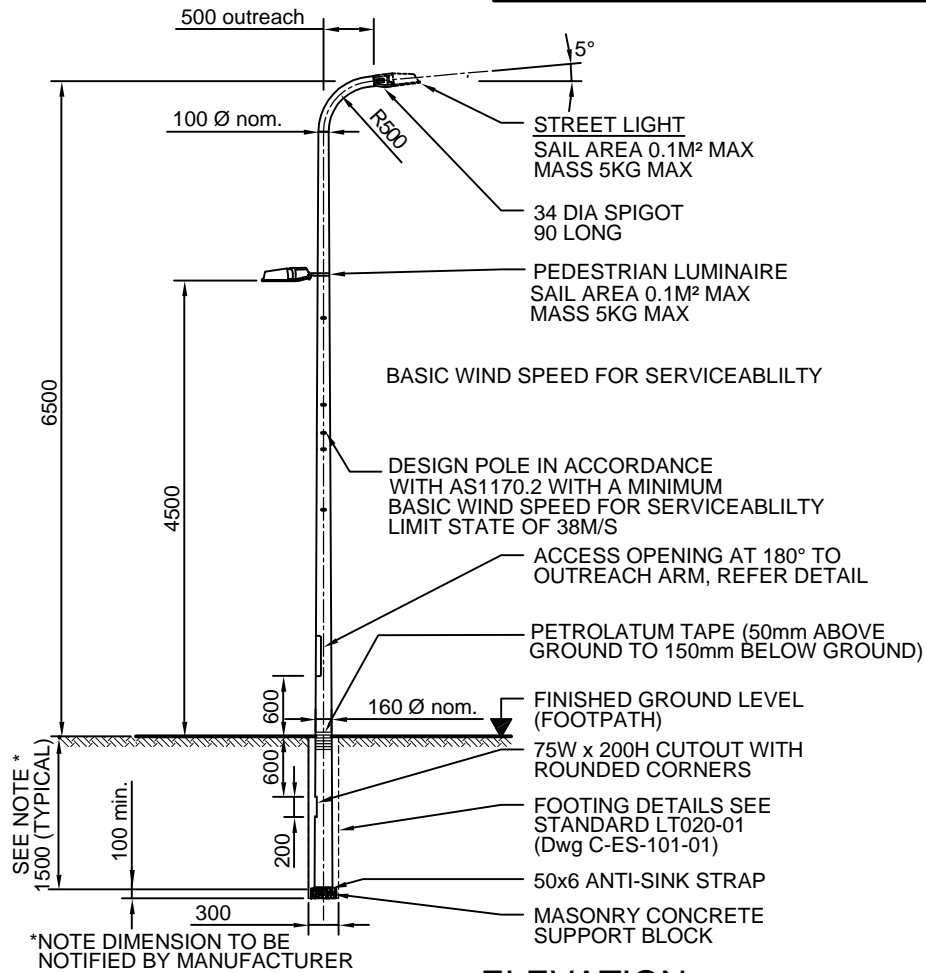


## ACC SWITCHBOARD

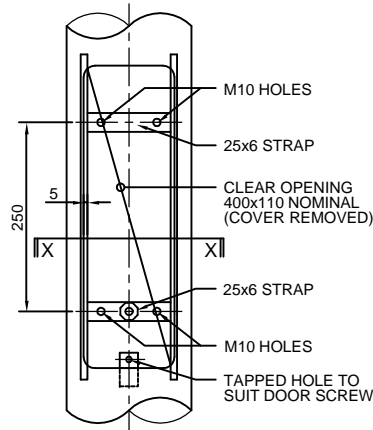
SEE DRAWING LT700 SHEET 02

DESIGNED TL	CHECKED TL	<p>© COPYRIGHT</p> <p>This document produced by City of Adelaide shall not copied without written consent.</p>		<p>CONSTRUCTION STANDARD</p> <p>Lighting and Electrical</p> <p>UNDERGROUND ELECTRICAL ENCLOSURE</p> <p>INTERNAL BOARD OPTIONS</p>		<p><b>DELAIDE</b></p> <p>CITY COUNCIL</p>	
DRAWN JB/BB	CERTIFIED RS						
	DATE 01/2002						
	SCALE N.T.S.						
DRWG No. C-ES-133-04						STANDARD NUMBER	SHEET No.
						LT 310	03

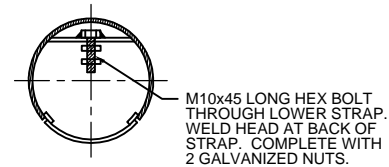
FOR CODE REFERENCES, OPTIONS, VARIABLE DIMENSIONS AND  
GENERAL INFORMATION, SEE STANDARD LT010-01 (Dwg C-ES-100-01)



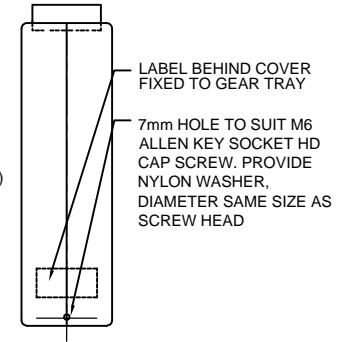
**ELEVATION**



**ENLARGEMENT AT  
ACCESS OPENING**



**SECTION X-X**



**ACCESS COVER  
DETAIL**

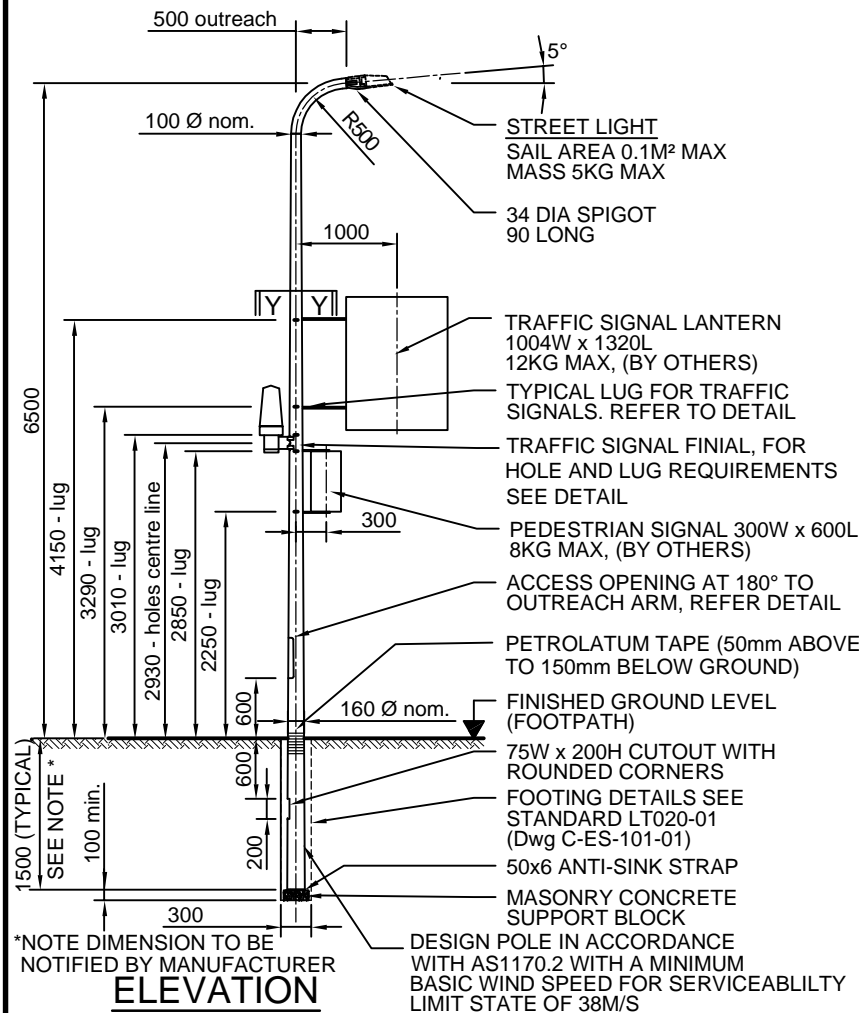
**NOTE**

1. COLUMN TO CONFORM TO RELEVANT AUSTRALIAN STANDARDS AND ATTACHED ACC SPECIFICATION.
2. COLUMN SHALL BE HOT DIPPED GALVANISED
3. FOR FOOTING DETAILS REFER TO STANDARD LT020-01 (Dwg C-ES-101-01)
4. LABEL REQUIREMENTS

CORPORATION OF THE CITY OF  
ADELAIDE  
MANUFACTURER'S NAME  
CONTRACT NUMBER  
MONTH/YEAR OF MANUFACTURE

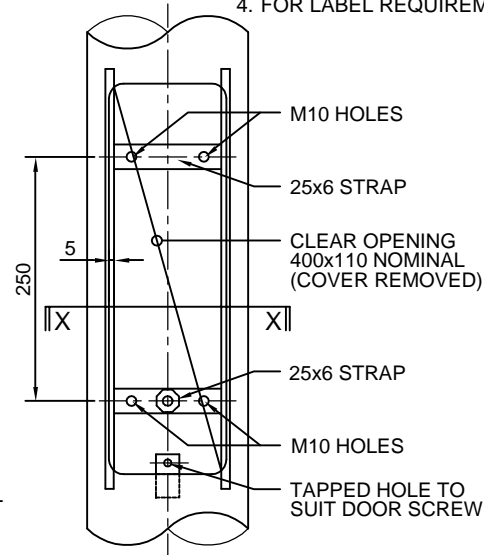
DESIGNED TL	CHECKED TL	<p>CONSTRUCTION STANDARD</p> <p>Lighting and Electrical</p> <p>6.5 M COLUMN</p>		<p><b>DELAIDE</b> CITY COUNCIL</p>	
DRAWN JR/JB	CERTIFIED RS				
	DATE 05/2001				
	SCALE N.T.S.				
		<p>© COPYRIGHT</p> <p>This document produced by City of Adelaide shall not copied without written consent.</p>		STANDARD NUMBER	SHEET No.
<p>DRWG No. C-ES-102-01</p>				LT 400	01

FOR CODE REFERENCES, OPTIONS, VARIABLE DIMENSIONS AND  
GENERAL INFORMATION, SEE STANDARD LT010-01 (Dwg C-ES-100-01)

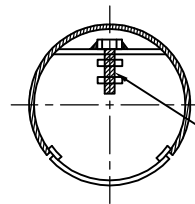


## NOTE

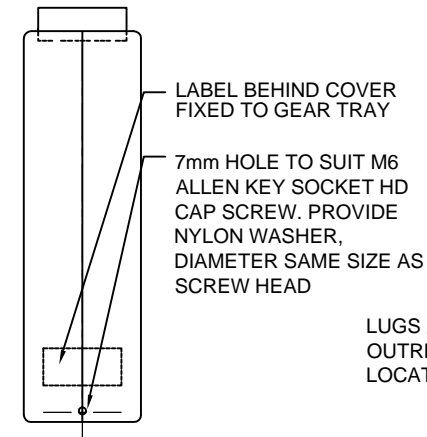
1. COLUMN TO CONFORM TO RELEVANT AUSTRALIAN STANDARDS AND ATTACHED ACC SPECIFICATION
2. COLUMN SHALL BE HOT DIPPED GALVANISED
3. FOR FOOTING DETAILS REFER TO STANDARD LT020-01 (Dwg C-ES-101-01)
4. FOR LABEL REQUIREMENTS REFER TO STANDARD LT400-01 (Dwg C-ES-102-01)



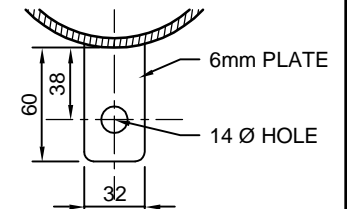
## ENLARGEMENT AT ACCESS OPENING



## SECTION X-X



## ACCESS COVER DETAIL

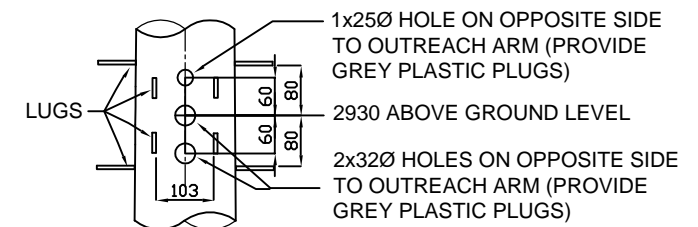


## LUG DETAIL

LUGS AT 90° TO  
OUTREACH ARM (5  
LOCATIONS EACH SIDE)

LUGS OPPOSITE  
OUTREACH ARM (2  
LOCATIONS) SEE  
ENLARGEMENT AT  
TRAFFIC SIGNAL  
FINIAL

## SECTION Y-Y



## ENLARGEMENT AT TRAFFIC SIGNAL FINIAL

DESIGNED TL	CHECKED TL
DRAWN JR/JB	CERTIFIED RS
DATE 05/2001	SCALE N.T.S.
DRWG No. C-ES-102-02	

© COPYRIGHT

This document produced by City of Adelaide shall not copied without written consent.

## CONSTRUCTION STANDARD

Lighting and Electrical

6.5 M COLUMN

with Traffic Light Attachments

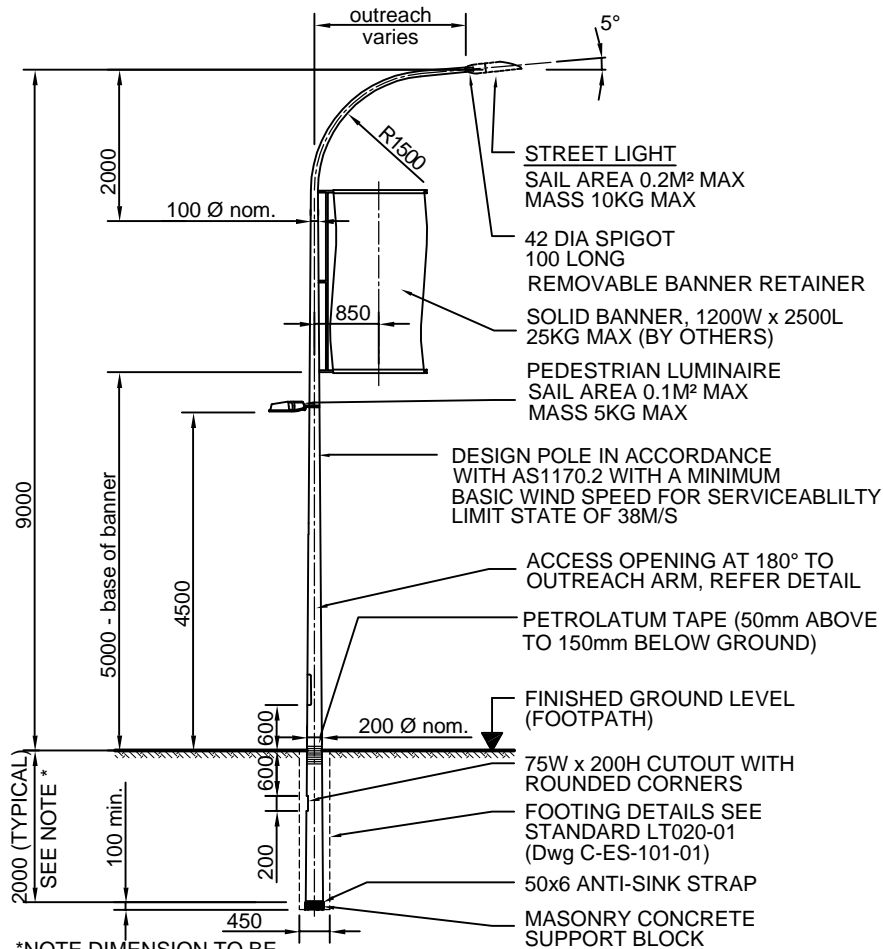


STANDARD NUMBER SHEET No.

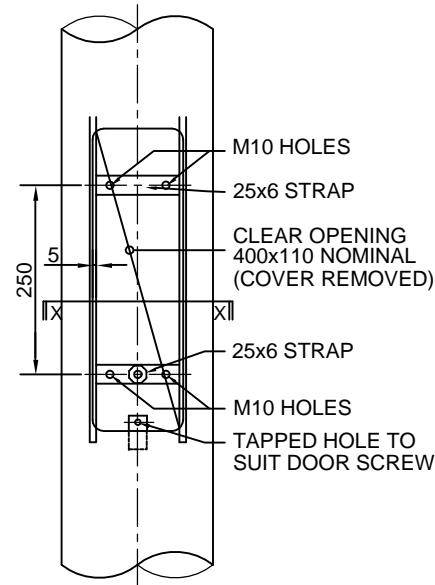
LT 400

02

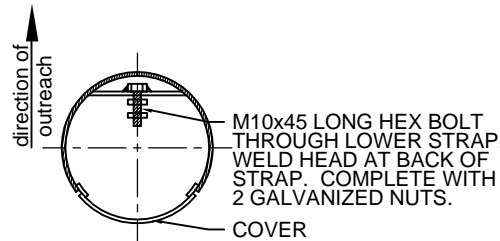
FOR CODE REFERENCES, OPTIONS, VARIABLE DIMENSIONS AND  
GENERAL INFORMATION, SEE STANDARD LT010-01 (Dwg C-ES-100-01)



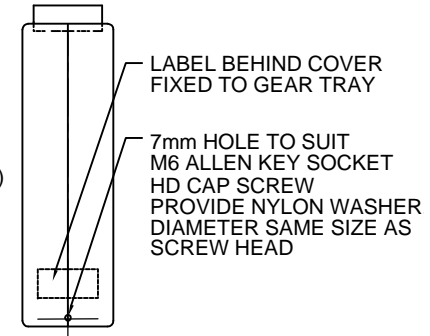
## ELEVATION



## ENLARGEMENT AT ACCESS OPENING



## SECTION X-X



## ACCESS COVER DETAIL

### NOTE

1. COLUMN TO CONFORM TO RELEVANT AUSTRALIAN STANDARDS AND ATTACHED ACC SPECIFICATION.
2. COLUMN SHALL BE HOT DIPPED GALVANISED AND WET PAINTED IN ACCORDANCE WITH ATTACHED ACC SPECIFICATION.
3. FOR FOOTING DETAILS REFER TO STANDARD LT020-01 (Dwg C-ES-101-01)
4. LABEL REQUIREMENTS

CORPORATION OF THE CITY OF  
ADELAIDE  
MANUFACTURER'S NAME  
CONTRACT NUMBER  
MONTH/YEAR OF MANUFACTURE

DESIGNED TL	CHECKED TL
DRAWN JR/JB	CERTIFIED RS
City Projects	DATE 05/2001
	SCALE N.T.S.
	DRWG No. C-ES-103-01

© COPYRIGHT

This document produced by City of Adelaide shall not copied without written consent.

### CONSTRUCTION STANDARD

Lighting and Electrical

9.0 M COLUMN

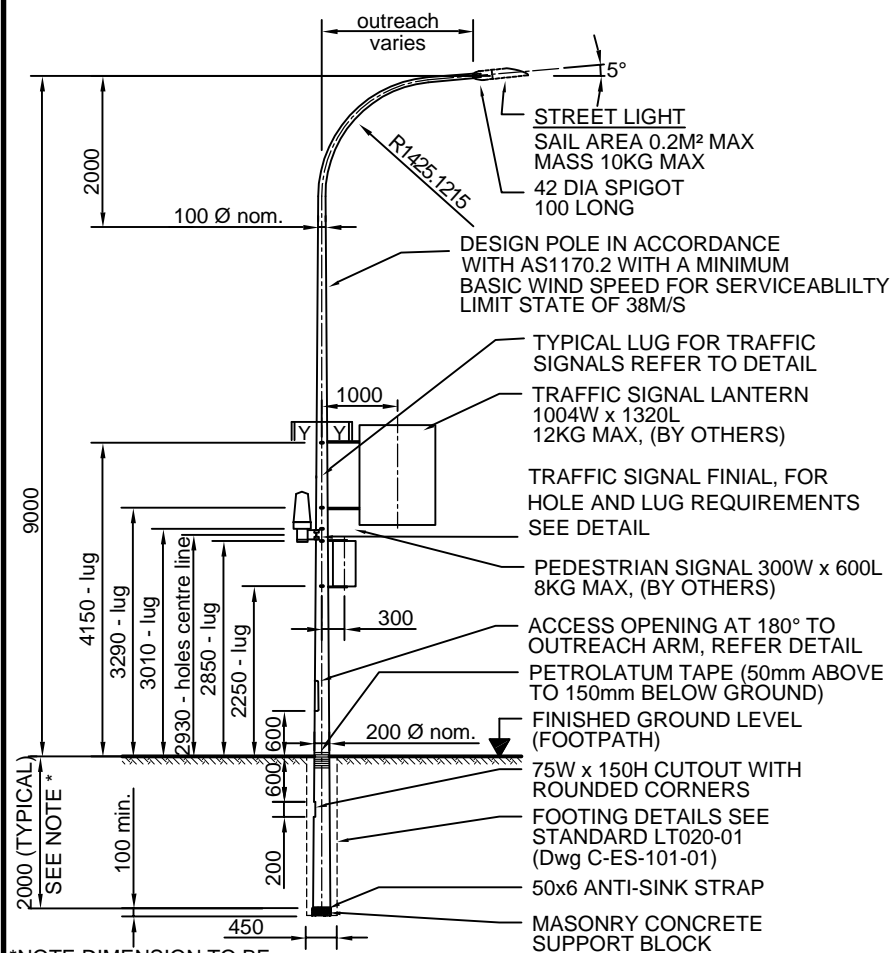


STANDARD NUMBER SHEET No.

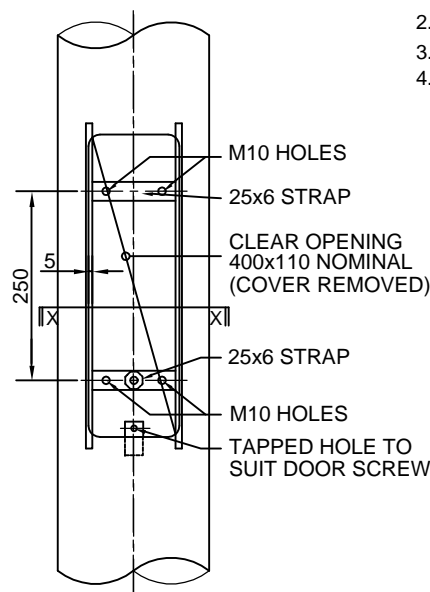
LT 410

01

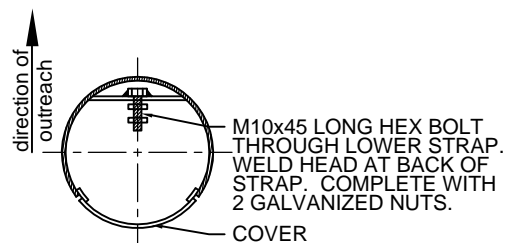
FOR CODE REFERENCES, OPTIONS, VARIABLE DIMENSIONS AND  
GENERAL INFORMATION, SEE STANDARD LT010-01 (Dwg C-ES-100-01)



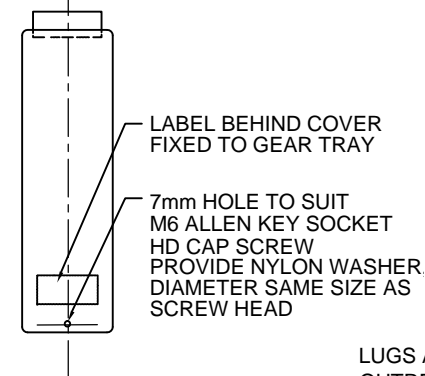
## ELEVATION



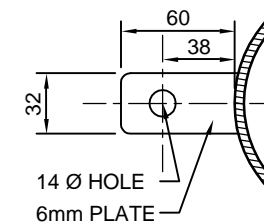
## ENLARGEMENT AT ACCESS OPENING



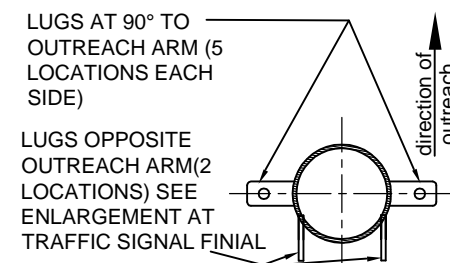
## SECTION X-X



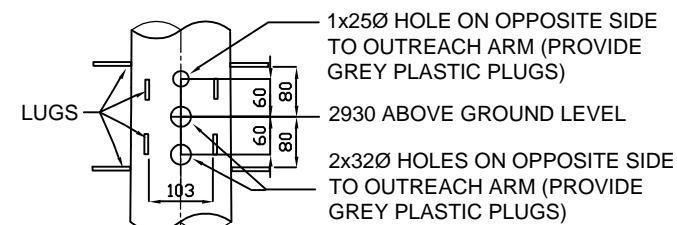
## ACCESS COVER DETAIL



## LUG DETAIL





SECTION Y-Y

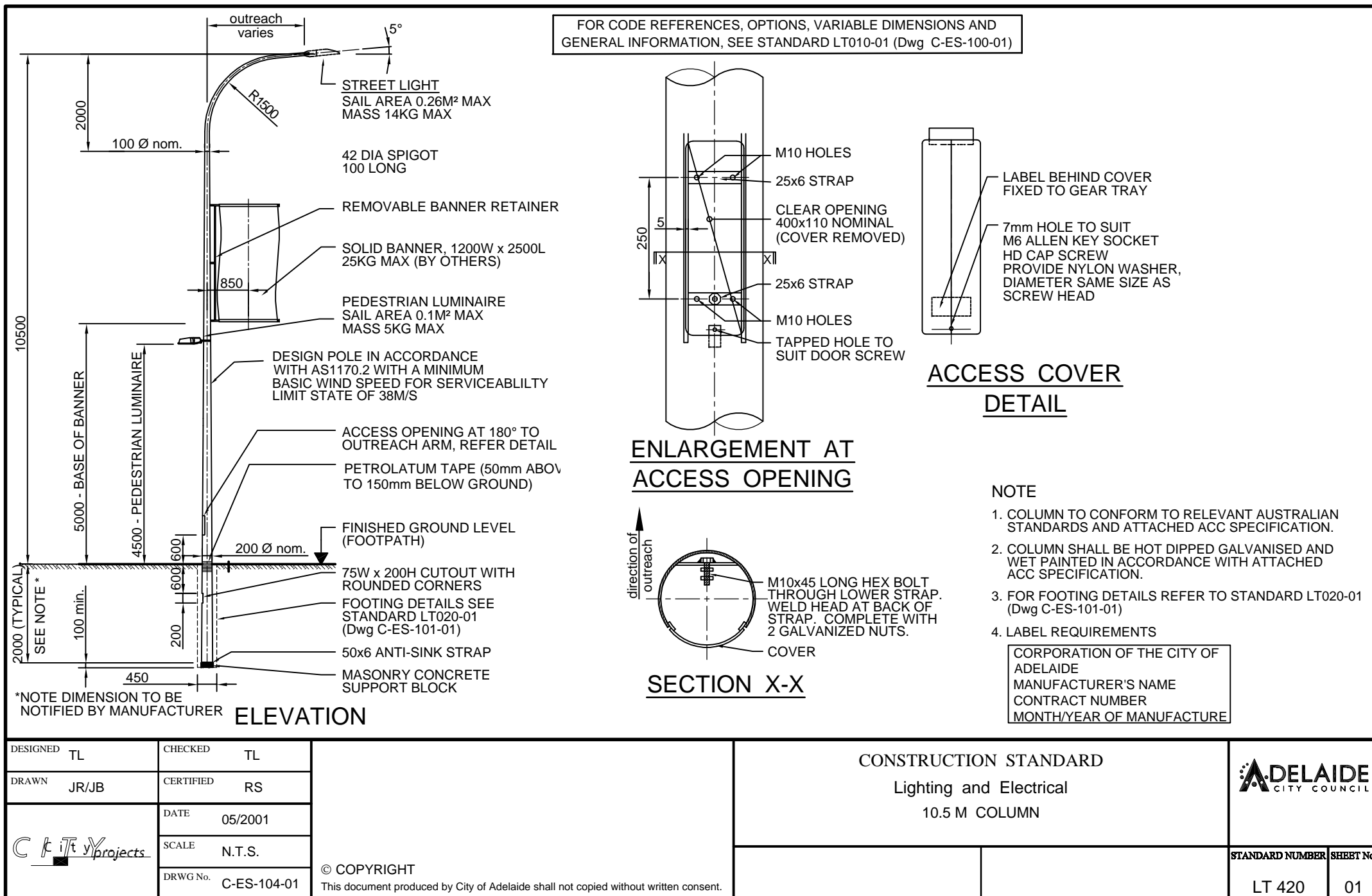


## ENLARGEMENT AT TRAFFIC SIGNAL FINIAL

## NOTE

1. COLUMN TO CONFORM TO RELEVANT AUSTRALIAN STANDARDS AND ATTACHED ACC SPECIFICATION.
2. COLUMN SHALL BE HOT DIPPED GALVANISED
3. FOR FOOTING DETAILS REFER TO STANDARD LT020-01 (Dwg C-ES-101-01)
4. FOR LABEL REQUIREMENTS REFER TO STANDARD LT410-01 (Dwg C-ES-103-01)

DESIGNED	TL	CHECKED	TL	<p>CONSTRUCTION STANDARD</p> <p>Lighting and Electrical</p> <p>9.0 M COLUMN</p> <p>with Traffic Light Attachments</p>	
DRAWN	JR/JB	CERTIFIED	RS		
	DATE	05/2001			
	SCALE	N.T.S.			
		DRWG No.	C-ES-103-02	<p>© COPYRIGHT</p> <p>This document produced by City of Adelaide shall not copied without written consent.</p>	<p>STANDARD NUMBER</p> <p>LT 410</p>
					<p>SHEET No</p> <p>02</p>

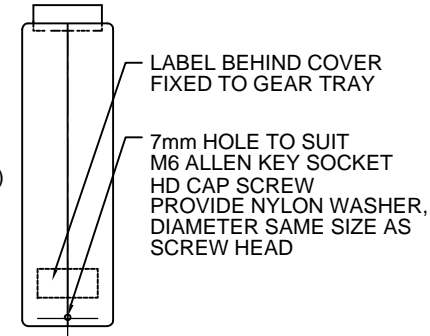
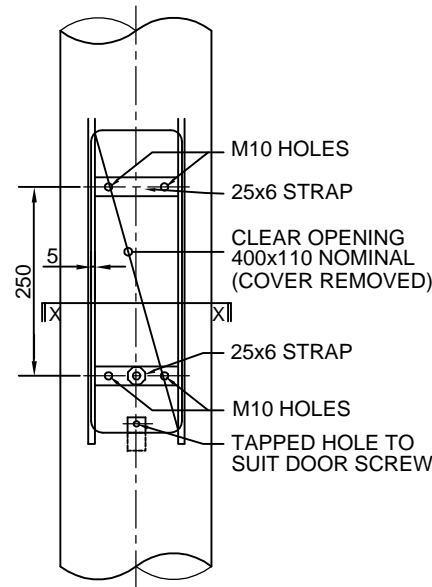
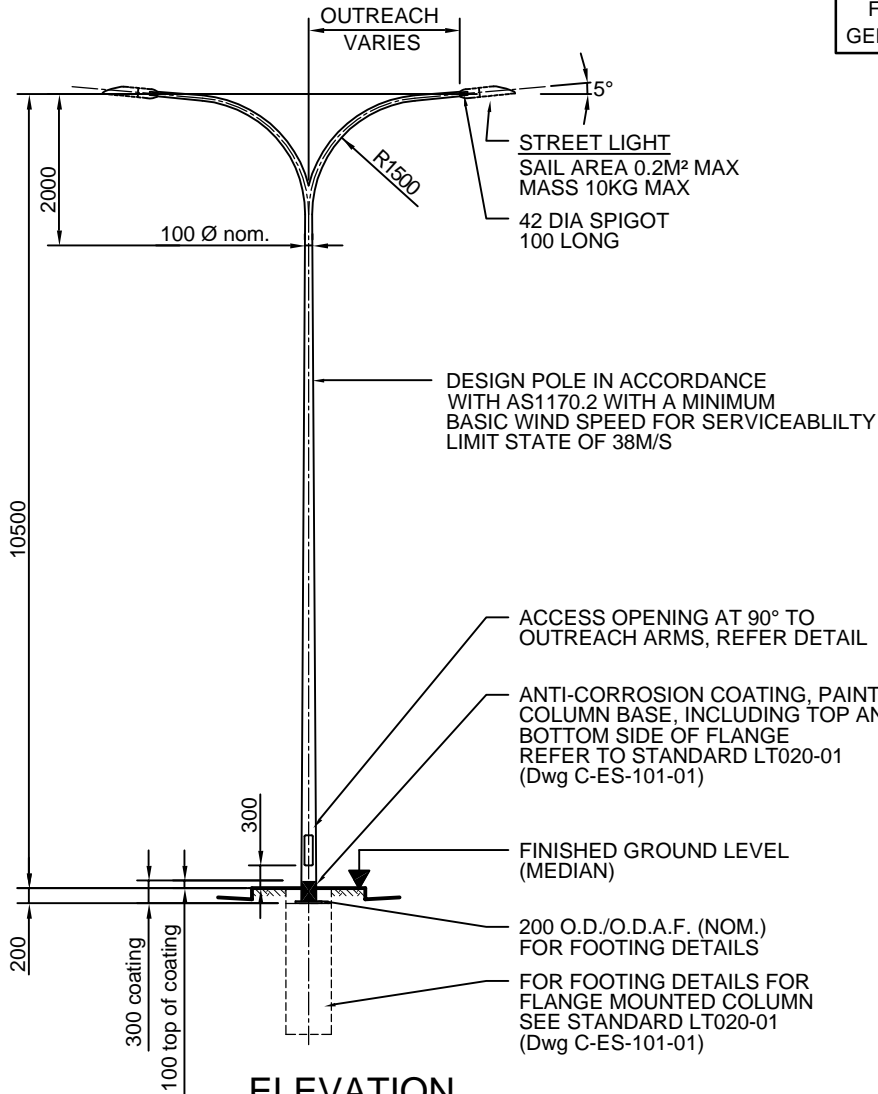


DESIGNED TL	CHECKED TL	<div style="display: flex; justify-content: space-between;"> <div> <p>© COPYRIGHT</p> <p>This document produced by City of Adelaide shall not copied without written consent.</p> </div> <div> <p>CONSTRUCTION STANDARD</p> <p>Lighting and Electrical</p> <p>10.5 M COLUMN</p> </div> <div> <p><b>DELAIDE</b> CITY COUNCIL</p> </div> </div>	
DRAWN JR/JB	CERTIFIED RS		
DATE 05/2001	SCALE N.T.S.		
DRWG No. C-ES-104-01			
<div style="display: flex; align-items: center;"> <div> <p>STANDARD NUMBER</p> <p>LT 420</p> </div> </div>		<div style="display: flex; align-items: center;"> <div> <p>SHEET No.</p> <p>01</p> </div> </div>	





FOR CODE REFERENCES, OPTIONS, VARIABLE DIMENSIONS AND  
GENERAL INFORMATION, SEE STANDARD LT010-01 (Dwg C-ES-100-01)

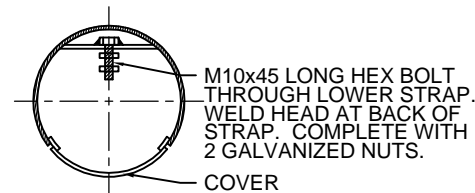




#### NOTE

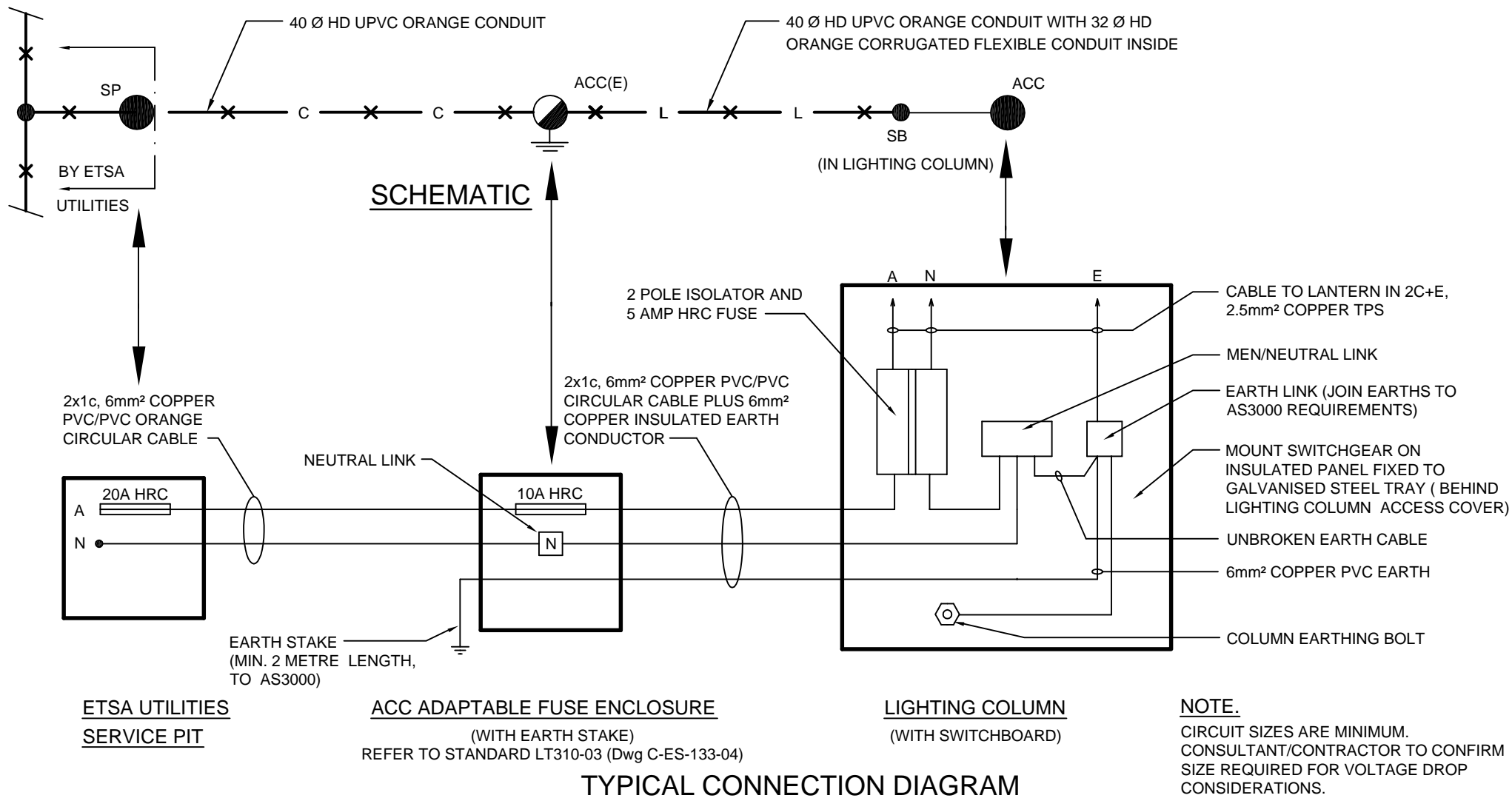
1. THESE COLUMNS ARE IMPACT ABSORBING AND COMPLY WITH RELATIVE AUSTRALIAN STANDARDS AND PERFORMANCE CRITERIA IN ACC SUPPLY SPECIFICATION.
2. COLUMN SHALL BE HOT DIPPED GALVANISED.
3. FOR FOOTING DETAILS REFER TO STANDARD LT 020-01 (Dwg C-ES-101-01)
4. LABEL REQUIREMENTS

CORPORATION OF THE CITY OF  
ADELAIDE  
MANUFACTURER'S NAME  
CONTRACT NUMBER  
MONTH/YEAR OF MANUFACTURE

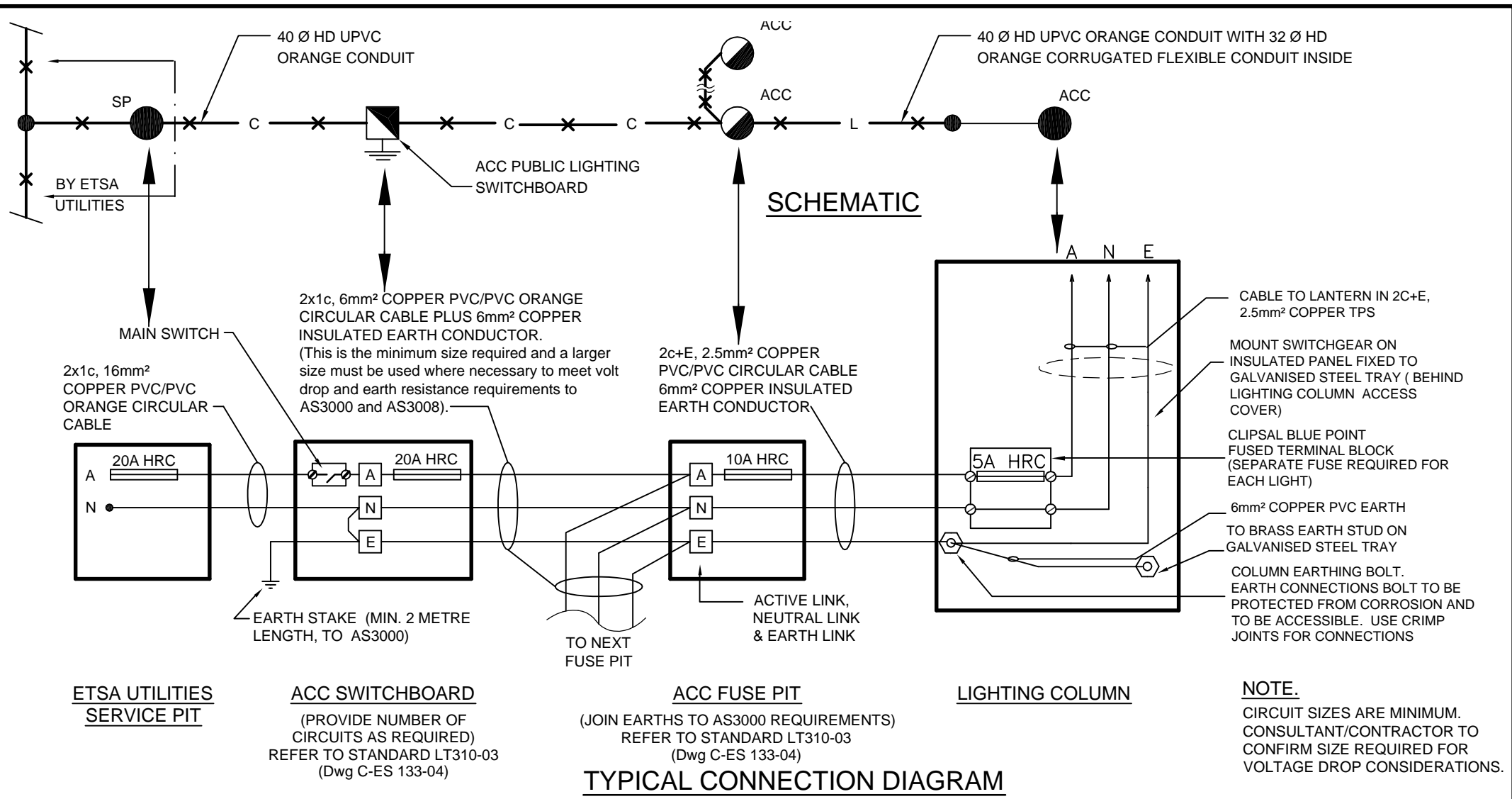
direction of outreach



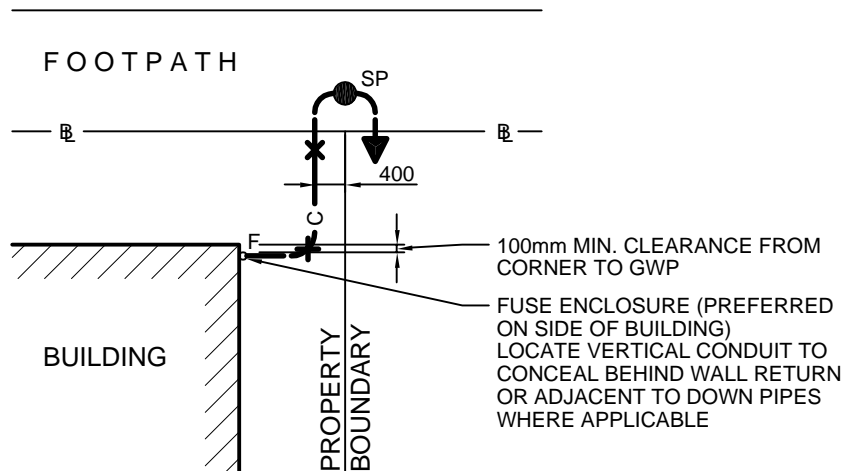
DESIGNED TL	CHECKED TL	<div></div>	CONSTRUCTION STANDARD Lighting and Electrical 10.5 M COLUMN Double Outreach		<div></div>	
DRAWN JR/JB	CERTIFIED RS					
<div></div>	DATE 05/2001				STANDARD NUMBER LT 421	
	SCALE N.T.S.					
DRWG No. C-ES-105-01	© COPYRIGHT This document produced by City of Adelaide shall not copied without written consent.					



DESIGNED TL	CHECKED TL	<p>© COPYRIGHT</p> <p>This document produced by City of Adelaide shall not copied without written consent.</p>	<p>CONSTRUCTION STANDARD</p> <p>Lighting and Electrical</p> <p>SINGLE LIGHTING COLUMN</p> <p>Direct Supply from ETSA Pit</p>		<p><b>DELAIDE</b> CITY COUNCIL</p>
DRAWN JR/JB	CERTIFIED RS				
<p><i>City Projects</i></p>	DATE 05/2001				<p>STANDARD NUMBER</p> <p>LT 700</p>
	SCALE N.T.S.				
	DRWG No. C-ES-130-01				<p>SHEET No.</p> <p>01</p>



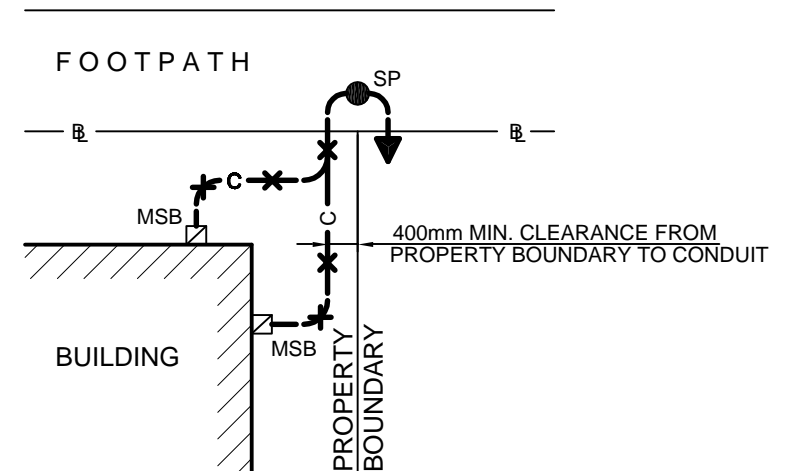
DESIGNED TL	CHECKED TL	<div> </div>	<div> CONSTRUCTION STANDARD Lighting and Electrical MULTIPLE LIGHTING COLUMNS </div>		<div> </div>
DRAWN JR/JB	CERTIFIED RS				
DATE 05-2001	SCALE N.T.S.		<div> STANDARD NUMBER LT 700 </div>		<div> SHEET No. 02 </div>
DRWG No. C-ES-131-01	© COPYRIGHT This document produced by City of Adelaide shall not copied without written consent.				



**OPTION 1**  
**TO NEW ETSA UTILITIES FUSE ENCLOSURE**

**NOTE**

CONTRACTOR TO LIAISE WITH  
TELSTRA FOR UTILISING CONSUMER  
MAINS SERVICE TRENCH  
(WHERE APPLICABLE)



**OPTION 2**  
**TO EXISTING METER SWITCHBOARD**

**NOTES**

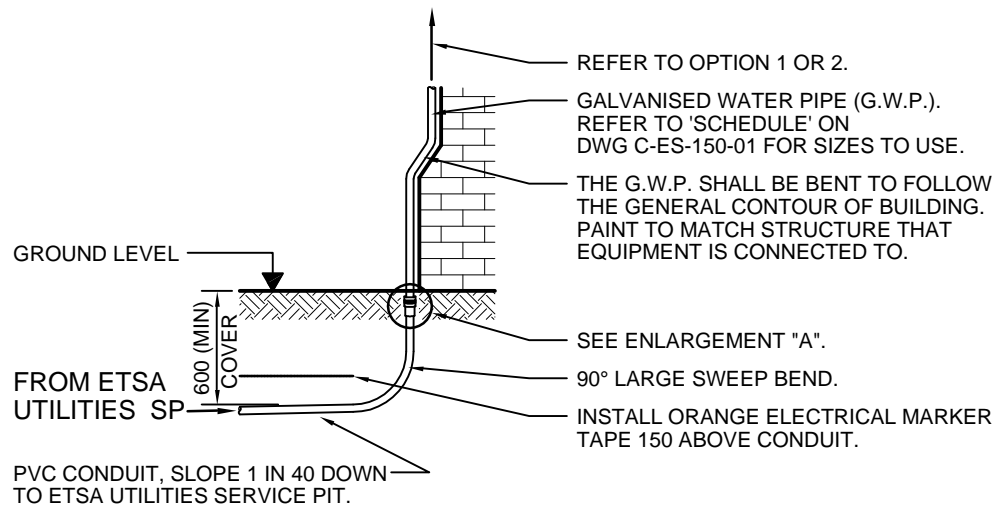
1. CONTRACTOR TO LIAISE WITH TELECOMMUNICATIONS AUTHORITY FOR SHARING OF CONSUMER MAINS SERVICE TRENCH (WHERE APPLICABLE).
2. METHOD AND TYPE OF FIXINGS USED FOR GWP SHALL BE TO APPROVAL OF SUPERINTENDENT.
3. THE INSTALLED PVC BEND AND COUPLING ADAPTOR SHALL BE INSPECTED BY SUPERINTENDENT PRIOR TO BACK FILLING.
4. THE PROPOSED GWP AND FUSE ENCLOSURE SHALL BE PAINTED WITH PRIMER AND TWO COATS OF EXTERIOR PAINT. COLOUR TO MATCH THE WALL OR STRUCTURE THAT EQUIPMENT IS MOUNTED TO.
5. FOR ELEVATIONS, REFER TO STANDARD LT800-02 (Dwg C-ES-150-02) .

**SCHEDULE**

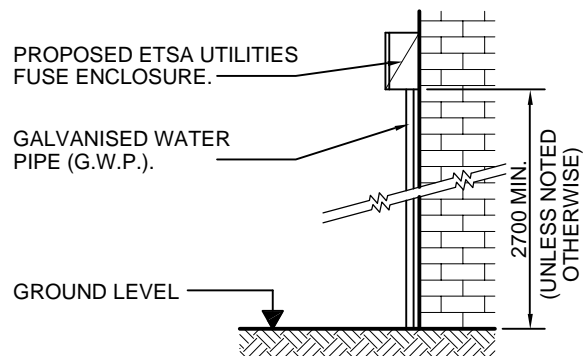
**NEW CONSUMER MAINS SERVICE**

SERVICE TYPE	No. OF PHASES	SERVICE CAPACITY	CABLE SIZE & TYPE Cu,PVC/PVC	U/G CONDUIT HD UPVC NOM.SIZE	ABOVEGROUND GWP (MEDIUM DUTY) NOM. BORE	DIMENSIONS OF FUSE ENCLOSURE (W x H x D)
A	1	70AMP	16mm <sup>2</sup>	32Ø	25Ø	380 x 200 x 180
B	2	60AMP	16mm <sup>2</sup>	40Ø	32Ø	380 x 200 x 180
C	3	60AMP	16mm <sup>2</sup>	40Ø	32Ø	380 x 300 x 180
D	3	100AMP	25mm <sup>2</sup>	50Ø	40Ø	380 x 300 x 180
E	3	100AMP	35mm <sup>2</sup>	50Ø	40Ø	380 x 300 x 180
F	3	200AMP	95mm <sup>2</sup>	65Ø	65Ø	800 x 370 x 250

DESIGNED TL	CHECKED TL	<p>© COPYRIGHT</p> <p>This document produced by City of Adelaide shall not copied without written consent.</p>	<p>CONSTRUCTION STANDARD</p> <p>Lighting and Electrical</p> <p>UNDERGROUNDING OF PRIVATE PROPERTIES</p> <p>Plan and Schedule</p>		<p><b>DELAIDE</b> CITY COUNCIL</p>
DRAWN JR/JB	CERTIFIED RS				
<p><b>City Projects</b></p>	DATE 05/2001				<p>STANDARD NUMBER</p> <p>LT 800</p>
	SCALE N.T.S.				
	DRWG No. C-ES-150-01				<p>SHEET No.</p> <p>01</p>



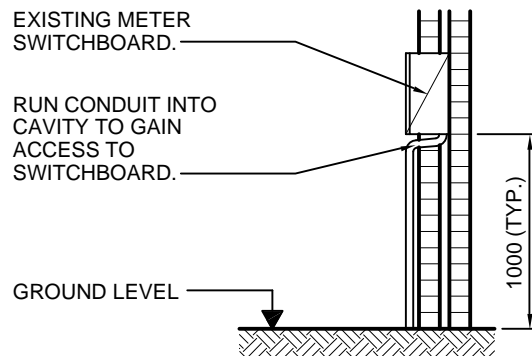
### CONSUMERS SERVICE MAIN



#### OPTION 1

#### TO NEW ETSA UTILITIES FUSE ENCLOSURE

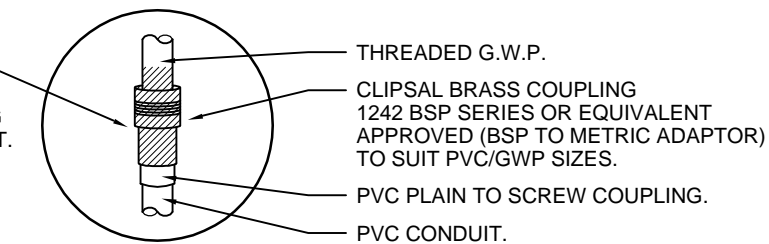
(WHERE METER BOX IS INSIDE BUILDING)



#### OPTION 2

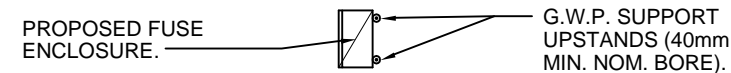
#### TO EXISTING METER SWITCHBOARD

(WHERE METER SWITCHBOARD IS EXTERNAL TO BUILDING)

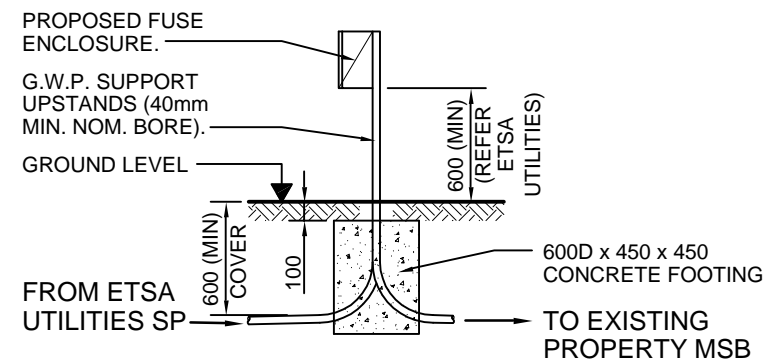


#### ENLARGEMENT 'A'

(N.T.S.)





#### OPTION 3 - PLAN VIEW

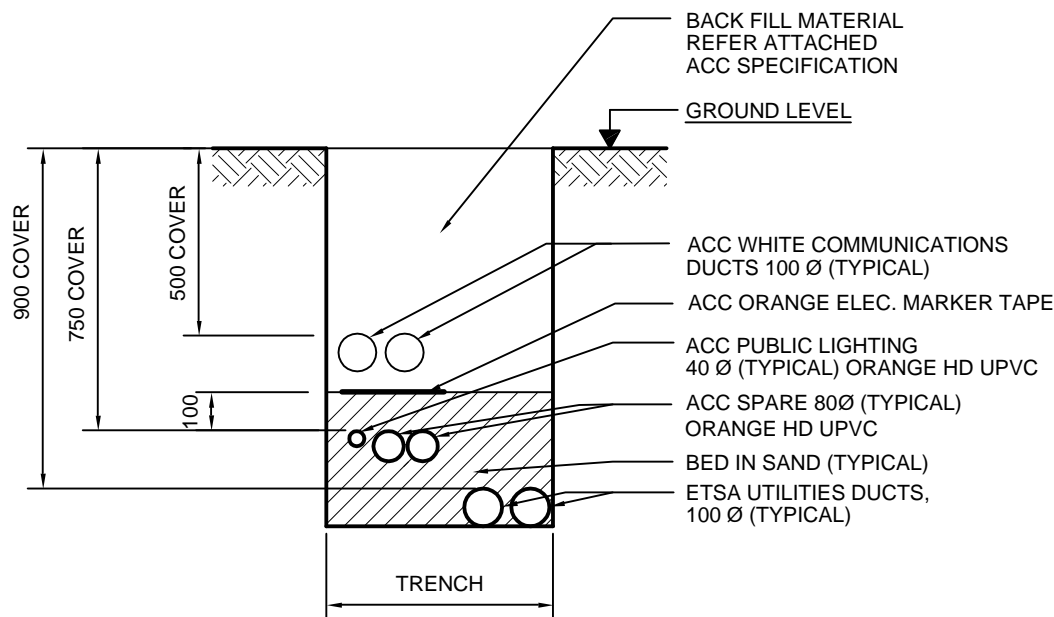


#### OPTION 3

#### TO NEW FUSE ENCLOSURE ON UPSTAND

(WHERE THE FUSE ENCLOSURE CANNOT BE FIXED TO BUILDING)

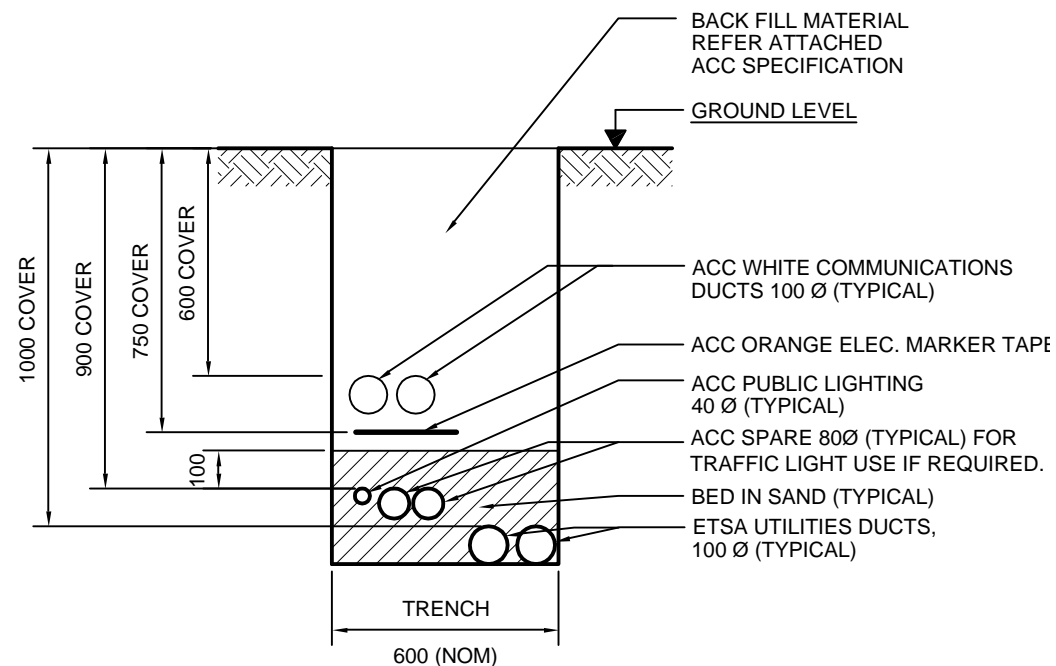
DESIGNED TL	CHECKED TL	<div>© COPYRIGHT</div> <div>This document produced by City of Adelaide shall not copied without written consent.</div>	<div>CONSTRUCTION STANDARD</div> <div>Lighting and Electrical</div> <div>UNDERGROUNDING OF PRIVATE PROPERTIES</div> <div>Details</div>		<div></div>	
DRAWN JR/JB	CERTIFIED RS					
	DATE 05/2001					
	SCALE N.T.S.					
	DRWG No. C-ES-150-02					
				STANDARD NUMBER	SHEET No.	
				LT 800	02	



600 (NOM) WITH ETSA UTILITIES DUCTS  
300 (NOM) WITHOUT ETSA UTILITIES DUCTS

### FOOTPATH

(ACC & ETSA UTILITIES ELECTRICAL DUCTS)



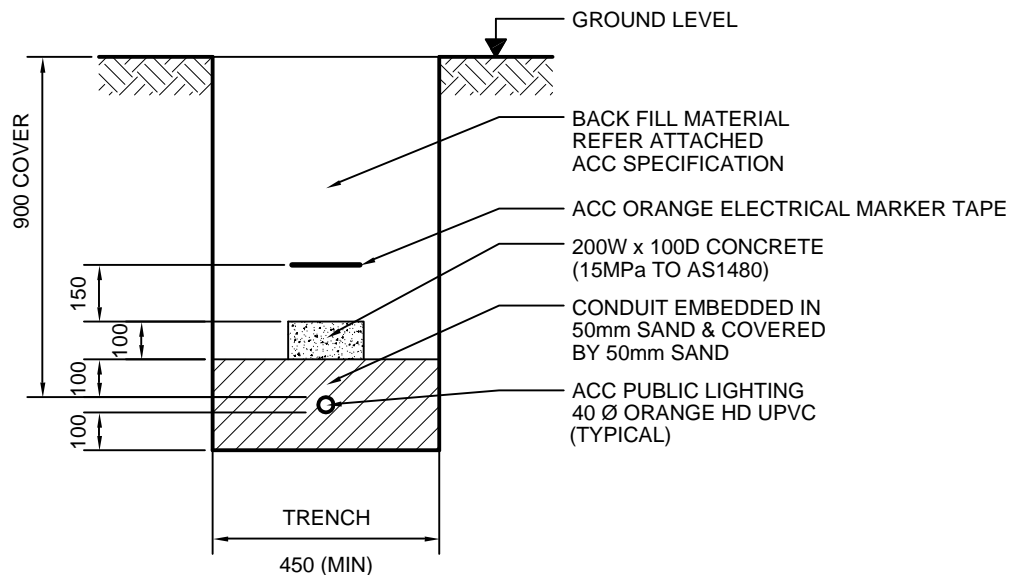
### ROADWAY

(ACC & ETSA UTILITIES ELECTRICAL DUCTS)

### NOTE

1. CO-ORDINATE DUCTING REQUIREMENTS WITH  
ALL SERVICE AUTHORITIES

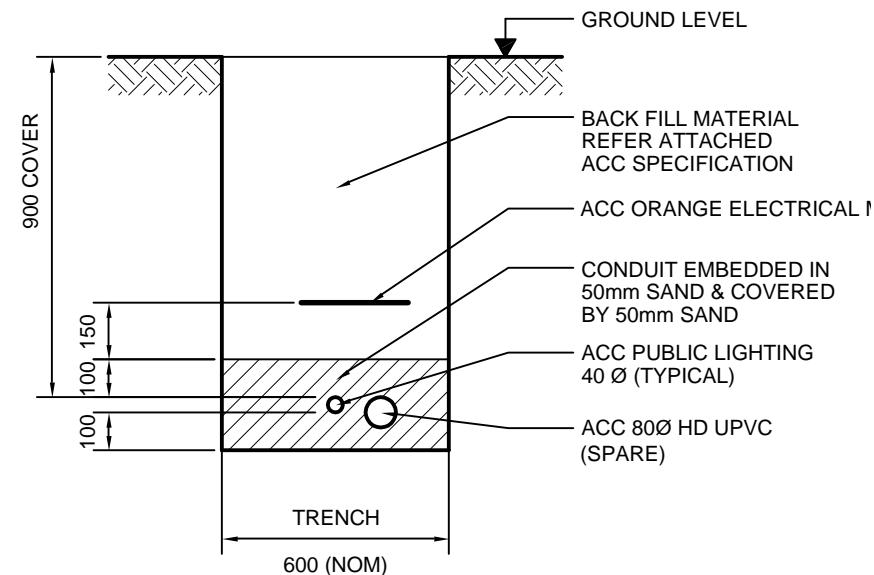
DESIGNED TL	CHECKED TL	<p>CONSTRUCTION STANDARD</p> <p>Lighting and Electrical</p> <p>TRENCHES</p> <p>Streets</p>		<p>DELAIDE CITY COUNCIL</p>	
DRAWN JR/JB	CERTIFIED RS				
	DATE 05/2001			STANDARD NUMBER	SHEET No.
	SCALE N.T.S.			LT 900	01
DRWG No. C-ES-140-01		© COPYRIGHT This document produced by City of Adelaide shall not copied without written consent.			



### PARK LANDS - GENERAL

### NOTE

- 1 CO-ORDINATE DUCTING REQUIREMENTS WITH ALL SERVICE AUTHORITIES.
- 2 PERMANENT CABLE MARKERS REQUIRED AT MAXIMUM SPACING OF 30 METRES FOR LONG STRAIGHT ROUTES AND AT ANY CHANGE OF DIRECTION.
- 3 EVENT AREAS SHALL BE AS PARKLANDS GENERAL, BUT WITH 1500mm COVER.

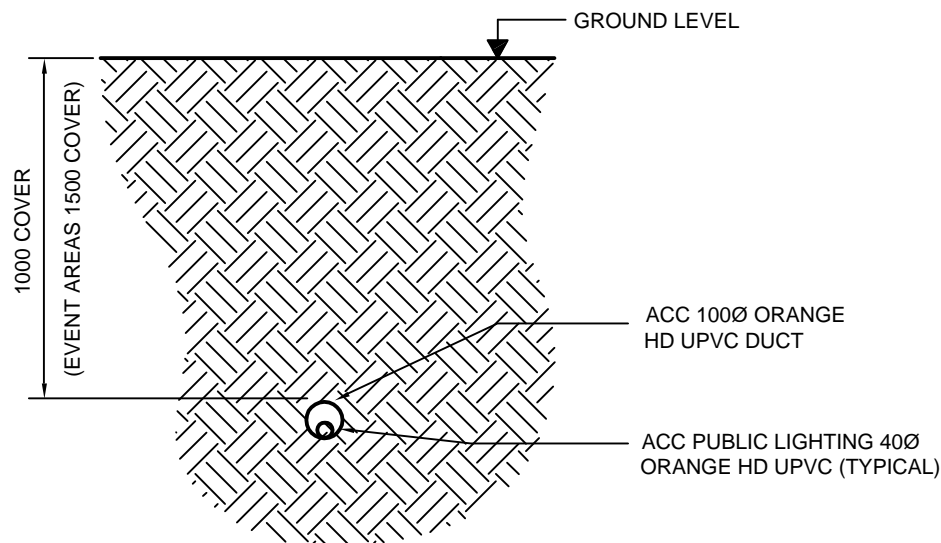


### PARK LANDS - PATHWAY LIGHTING

(FOR PUBLIC LIGHTING UNDER OR ADJACENT TO PATHWAYS, WHERE CABLE ROUTE IS CLEARLY DEFINED. CONTACT ACC PROJECT MANAGER TO DETERMINE ACCEPTABLE LOCATIONS)  
**IT IS NOT TO BE USED IN EVENT AREAS.**

DESIGNED TL	CHECKED TL	<p>CONSTRUCTION STANDARD</p> <p>Lighting and Electrical</p> <p>TRENCHES</p> <p>Park Lands</p>			
DRAWN JR/JB	CERTIFIED RS				
	DATE 05/2001				
	SCALE N.T.S.				
		<p>© COPYRIGHT</p> <p>This document produced by City of Adelaide shall not copied without written consent.</p>		STANDARD NUMBER	SHEET No.
DRWG No. C-ES-141-01				LT 900	02




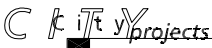


### PARK LANDS - BORED

FOR PUBLIC LIGHTING UNDER OR ADJACENT TO PATHWAYS WHERE CABLE ROUTE IS CLEARLY DEFINED AND TRADITIONAL TRENCHING METHODS ARE NOT PRACTICAL AND/OR MAY CAUSE HARM TO EXISTING VEGETATION. FOR PREFERRED METHOD OF CABLE POSITIONING IN PARK LANDS, SEE STANDARD LT900-02 (Dwg C-ES-141-01).

### NOTE

- 1 CO-ORDINATE DUCTING REQUIREMENTS WITH ALL SERVICE AUTHORITIES.
- 2 PERMANENT CABLE MARKERS REQUIRED AT MAXIMUM SPACING OF 30 METRES FOR LONG STRAIGHT ROUTES AND AT ANY CHANGE OF DIRECTION AND AT ANY ENDS OF CONDUIT/CABLE RUN.
- 3 EVENT AREAS 1500mm COVER.

DESIGNED TL	CHECKED TL	<div></div> <div>© COPYRIGHT This document produced by City of Adelaide shall not copied without written consent.</div>	CONSTRUCTION STANDARD Lighting and Electrical BORED TRENCHES Park Lands		<div>STANDARD NUMBER LT 900</div> <div>SHEET No. 03</div>	
DRAWN NS/JB	CERTIFIED RS					
<div></div>	DATE 05/2001					
	SCALE N.T.S.					
	DRWG No. C-ES-141-02					