

LUTHERAN SEMINARY (Formerly Whinham College)

102-120 Jeffcott Street



(CD Ref 1345/15)

The massive main building of this complex, the former Whinham College, in substantial grounds at the corner of Jeffcott and Ward streets is a landmark in North Adelaide.

The building was erected to house one of South Australia's premier educational

establishments and has had continual use as an educational institution. Schools such as St Peter's, Prince Alfred and Whinham colleges, represented the peak of private education in South Australia. Whinham College could afford to erect such an impressive edifice even at a time when the public education system was expanding rapidly. The main building at Whinham College ranks in significance with the best remaining structures representing private education in South Australia; in fact, in terms of scale and detailing, it ranks with significant contemporary commercial structures. The design, and the use of polychrome brick, bluestone and cast-iron, are hallmarks of a building of the boom period, an unprecedented period of confidence, physical development and cultural maturity in the colony.

John Whinham was born in 1803 in Northumberland and arrived in South Australia in 1852 where he intended to engage in farming, rather than his previous occupation of teaching. He brought letters of introduction to some leading colonists but was soon convinced of the possibility of teaching as a livelihood. He became a tutor in mathematics at St Peter's College, then opened his own school in Margaret Street, North Adelaide, with three scholars. In 1854 he opened a secondary school in Ward Street, the North Adelaide Grammar School (forerunner to Whinham College), which became the best known school in the city.

From the 1870s private schools flourished in North Adelaide. Nesbit, Field, the Misses McMinn, and Lindon ran highly regarded educational establishments. Nevertheless, Whinham College remained the largest and most important school. In 1873 John Whinham retired, and his son Robert took over. To cope with an influx of scholars, plans were drawn up by the architect Thomas Frost for the construction of new school buildings at the corner of Ward and Jeffcott streets. The building was opened in 1882 and enjoyed a brief period of great influence and renown. It had a reputation as the most modern and best equipped secondary school in South Australia. In 1884, however, Robert Whinham was killed in a fall

Heritage of the City of Adelaide

from a horse and John Whinham was forced to resume control. From this time the reputation of the school deteriorated.

The building remains testimony to the high esteem in which the school and the Whinham family were held and was described in considerable detail in the *South Australian Register*, 25 September 1882.

The main building with its principal frontage to Jeffcott Street comprised a centre building and wings two storeys high. Wings at the rear extended with transepts enclosed three sides of an open court. 'The whole erection is in the Elizabethan style of architecture, and contains upwards of 40



(CD Ref 2018/83)

rooms'. The most prominent feature in the Jeffcott Street frontage, then as now, was the clock tower of white and red bricks, with cement enrichments and freestone columns with carved caps.



(CD Ref 1345/14)

The tower rises to a height of 53 feet . . . surmounted with clock dormers and ornamental windvane at summit of roof . . . and an excellent clock, imported from London, is fixed in the turret, the hours being struck on a large bell which can also be utilised as a school bell.

The centre block was recessed from the wings, providing space for a veranda/balcony. The centre block contained eight rooms, including the principal's private apartments. The front wings on the ground floor, were the dining room and sitting room, and on first floor, large dormitories.

The contract also included the boundary walls enclosing the two town acres, the main frontage being enclosed ' . . . with handsome iron railing, with double and single gate at either side'. The contractors for the main building were James King & Son of Hindmarsh, and for the second part of the work Fry & Bampffield of North Adelaide, under the superintendence of Thomas Frost. The cost was about £10 000.

Heritage of the City of Adelaide

In 1884 the property was vested with the Merchant Banking Co. of London Ltd. Ownership passed to John Howard Angas in 1889. The building was known as Whinham College until 1898, in 1900 becoming Angas College and then the Angas College Military Hospital until 1923. In that year it was sold to Immanuel College which occupied the site until the Second World War moving here from its original Tanunda location. The building is still owned by the Lutheran Church and used as its seminary for the Lutheran Church in Australia.

Frearson's Monthly Illustrated Adelaide News, November 1884; Loyau, G.E. *Notable South Australians*, 1885, p. 45; *South Australian Register*, 25 September 1882, 13 October 1884, 14 October 1884, 21 October 1884.

The text in this Information Sheet was copied from the **Heritage of the City of Adelaide: An Illustrated Guide**, (1996). The photographs contained in this Information Sheet are a selection of those held by Heritage Services, in digital format.

The property described in this Information Sheet is included in the Register of State Heritage places. A heritage listing does not mean or imply right of access by the public to such properties.

The heritage related Principles of Development Control as well as the Precinct specific objectives and Principles of Development Control are contained in the Adelaide (City) Development Plan. These should be referred to in whole when contemplating any development.

Further information on the Heritage Incentives Scheme, an initiative of Council to sponsor timely and appropriate conservation action is available upon request of the Customer Service Centre.



CITY OF ADELAIDE HERITAGE STUDY

The City Heritage Register-Definition of Items

Prepared by the Dept. of Planning and Development

Item	LUTHERAN SEMINARY (Former WHINHAM COLLEGE)	Building No	31/0705-5
Address	On land 194-240 Ward Street, North Adelaide 102-120 Jeffcott Street	CT	529/10

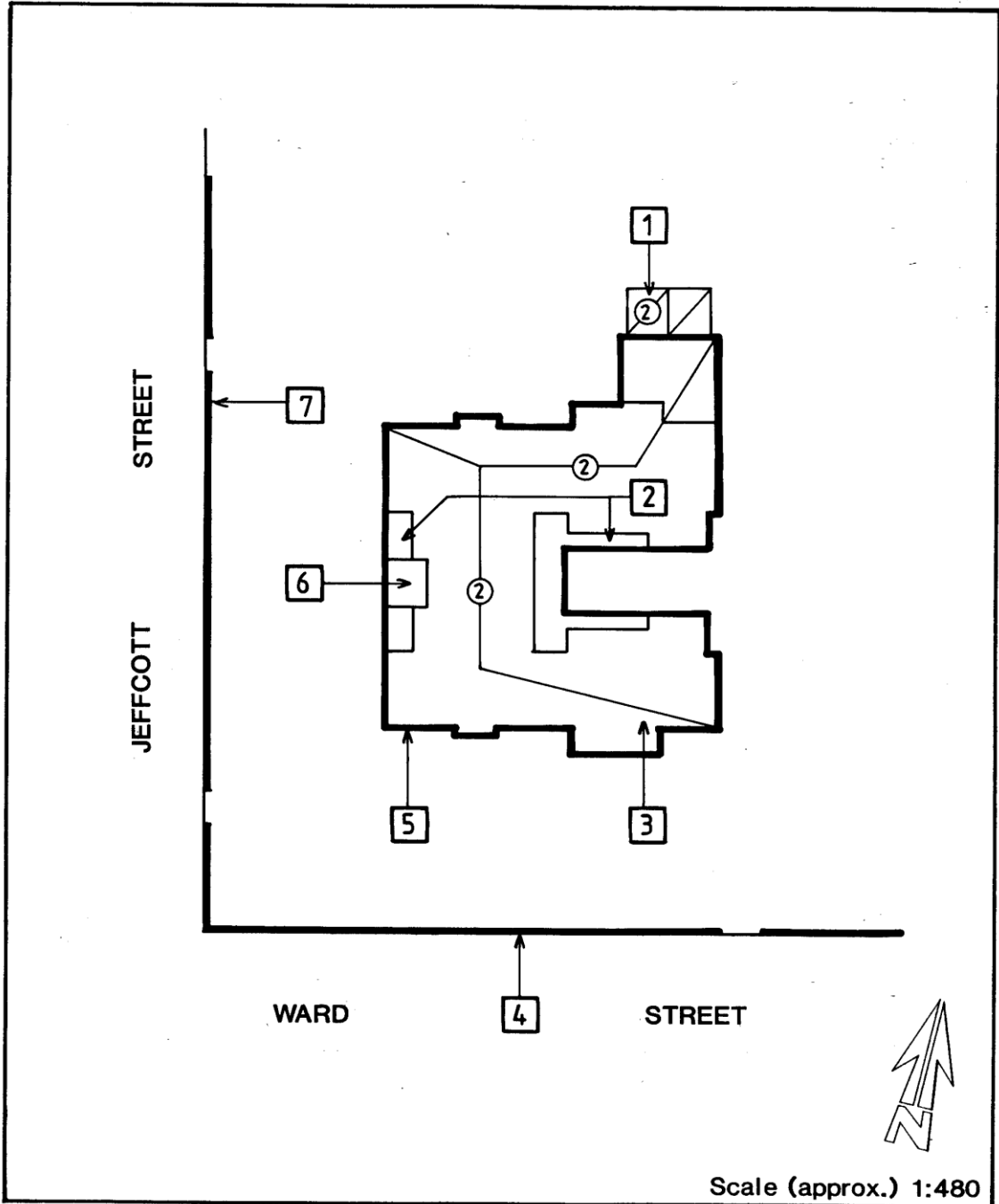


Image scanned - not to stated scale.

This Curtilage Map has been prepared as a guide only and no warranty or assurance is given about the accuracy of the content as it may contain obsolete information. The Corporation excludes all liability [including for negligence] in relation to your use of these documents.



CITY OF ADELAIDE HERITAGE STUDY

The City Heritage Register - Definition of Items

Prepared by the Dept. of Planning and Development

Item	LUTHERAN SEMINARY (Former WHINHAM COLLEGE)	Building No
		31/0705-5
Address	On land 194-240 Ward Street, North Adelaide	
	102-120 Jeffcott Street	CT 529/10

NOTES:

1. Brick addition.
2. Verandahs with cast iron balustrades, friezes, spandrels and columns.
3. Note: chimneys.
4. Coursed random sandstone fence with brick capping and pillars and rendered plinth.
5. Coursed random bluestone with brick quoins and enrichment, rendered plinth and polychrome dressings.
6. Clock tower - brick with stucco enrichment.
7. Cast iron fence with rendered plinth.