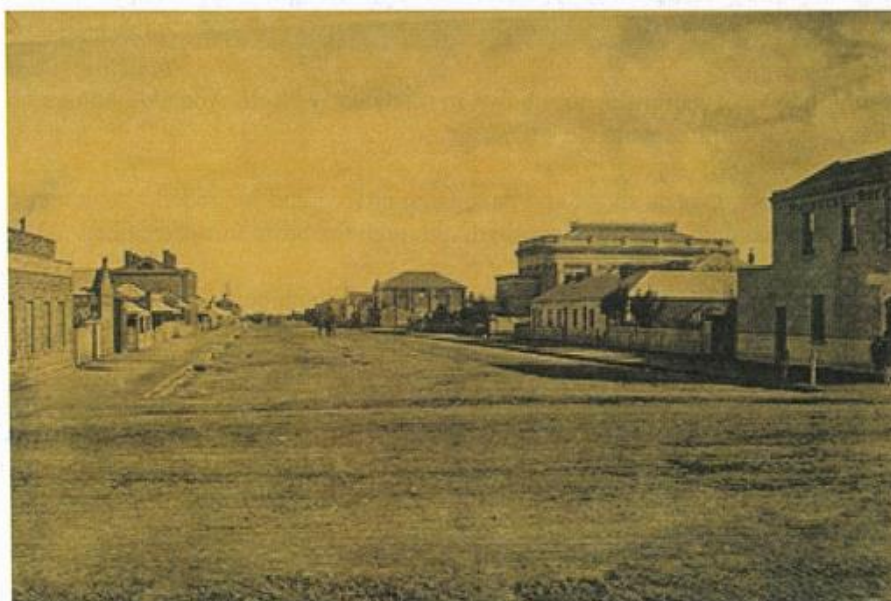


SHOPS (Former Row Houses)

134-140 Tynte Street

In her social history of North Adelaide, Paula Nagel described the impact of new colonial prosperity and resumed immigration in 1845: immigrant labourers, masons and plumbers were soon busily engaged in building and embellishing houses for the new rich and, in strong contrast, constructing small brick or stone cottages for the working classes.

Some of these cottages were built by businessmen for their labourers or servants, '... and others were the result of men who saw in this period of prosperity the opportunity for continual rental return, for a small initial outlay'. These cottages all followed a similar, simple pattern; often in a terrace divided only by partition walls, there was a narrow front veranda and three or four rooms, including parlour, bedrooms and kitchen. 'Unlike the larger houses that changed with new fashions and new innovations, the pattern of cottages remained the same for many years.' The ownership remained in the same hands also, for few labourers or even ordinary middle-class residents could afford to buy their own houses.



(CD Ref 1345/92)

Amid the monumental late nineteenth century public and commercial buildings of Tynte Street stands a row of modest cottages which perfectly illustrates that early period of speculative small house development. The cottages were built in the late 1840s and early 1850s, probably for James Ferdinand Schmidt as one of a number of property dealings and commercial ventures.

In the earliest recorded rate assessment of 1849 the row was described as only three cottages, each of three rooms, stone and brick. A fourth was added in 1854-55. During that time the row was owned by Schmidt who owned several other properties within and outside Adelaide.

© Corporation of the City of Adelaide

Heritage of the City of Adelaide

His interest in North Adelaide property probably stemmed from his time as licensee of the Queen's Head in Kermode Street from 1847 to 1849. He leased or owned a dozen hotels between 1847 and 1872, including the Golden Fleece, Duke of York, Exchange and Bijou in Adelaide, the Engine and Driver and the Old Spot at Gawler, and the Coach and Horses at Salisbury where he also took up farming.

The Tynte Street cottages were rented to people employed locally. One of the dwellings was used by John Parr as a small private school between about 1865 and 1872.



(CD Ref 1345/93)

Prominently sited almost on the line of the pavement, this small row of vernacular dwellings is important for its relatively original appearance. The hipped roof, small paned double-hung windows and fanlights with radiating glazing bars

exemplify the late Georgian influence shown in many early North Adelaide houses. They are constructed of the local limestone.

The cottages are now used as shops and have been altered and upgraded. As a consequence, their historical authenticity has been impaired, although the basic form remains.

ACA, Assessments, Smith Survey 1880; *Chronicle*, 18 November 1911; GRO, Memorial and deposit index books for J.F. Schmidt; Nagel, P., *North Adelaide 1837-1901*, 1974, pp. 25-6.

The text in this Information Sheet was copied from the **Heritage of the City of Adelaide: An Illustrated Guide**, (1996). The photographs contained in this Information Sheet are a selection of those held by Heritage Services, in digital format.

The property described in this Information Sheet is included in the Register of State Heritage places. A heritage listing does not mean or imply right of access by the public to such properties.

The heritage related Principles of Development Control as well as the Precinct specific objectives and Principles of Development Control are contained in the Adelaide (City) Development Plan. These should be referred to in whole when contemplating any development.

Further information on the Heritage Incentives Scheme, an initiative of Council to sponsor timely and appropriate conservation action is available upon request of the Customer Service Centre.

© Corporation of the City of Adelaide



CITY OF ADELAIDE HERITAGE STUDY

The City Heritage Register-Definition of Items

Prepared by the Dept. of Planning and Development

Item SHOPS, former HOUSES
Address 134-140 Tynte Street, North Adelaide

Building NO
30/0224
CT 3328/14
CT 3328/15
CT 3328/16

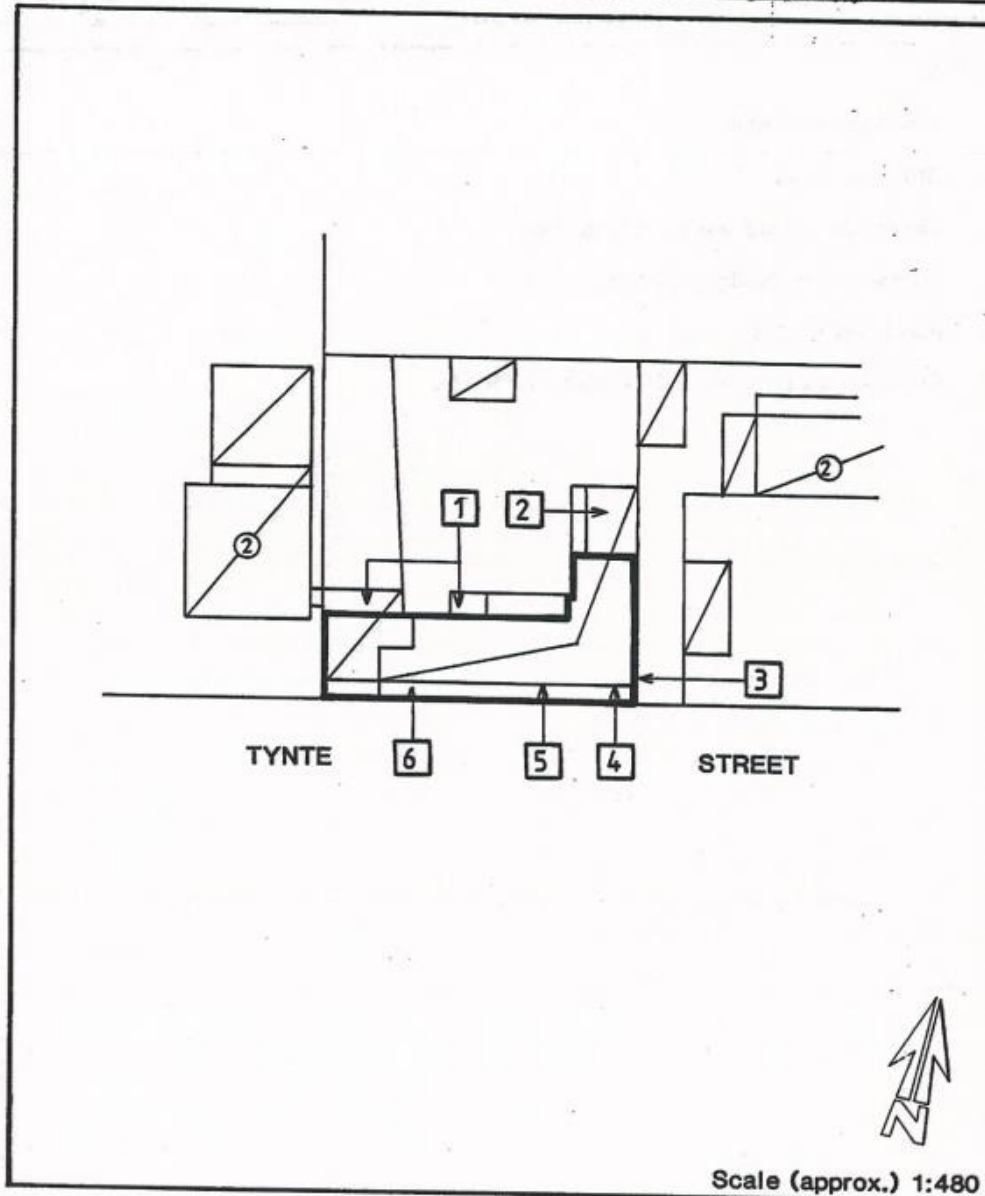


Image scanned - not to stated scale.

This Curtilage Map has been prepared as a guide only and no warranty or assurance is given about the accuracy of the content as it may contain obsolete information. The Corporation excludes all liability [including for negligence] in relation to your use of these documents.

© Corporation of the City of Adelaide

N:\PP\DP\Development and Transport Policy\Heritage\Data-Info Sheets for Website\tynte street 134-140 _shops (fmr row houses).DOC



CITY OF ADELAIDE HERITAGE STUDY

The City Heritage Register-Definition of Items

Prepared by the Dept.of Planning and Development

Item SHOPS, former HOUSES

Building NO
30/0224

Address 134-140 Tynte Street, North Adelaide

CT 3328/14
CT 3328/15
CT 3328/16

NOTES:

1. Closed-in verandah.
2. Brick addition.
3. Limestone rubble with brick quoins.
4. Doorway and fanlight altered.
5. Rendered facade.
6. Convex verandah for half length of facade.