

## FORMER HORSE TRAM ADMINISTRATION OFFICES

(rear) 62-80 Gover Street



(CD Ref 1724/47)

The horse tram depot was one of the earliest of its type constructed in Australia, and expressed the development of a new form of public transport - the creation of Adelaide's horse-drawn tram network. Only two other horse tramway depots remain in metropolitan Adelaide - at Maylands, and Prospect. However, the historical character of the North Adelaide depot was considerably reduced, at first

as a result of a fire in the car barn (in 1897) and then by later changes for its new uses as stables and then a garage for a bakery.

Apart from a brief, unsuccessful effort by a Sydney company in the 1860s, the first company in Australia to operate a horse tram business was the Adelaide and Suburban Tramway Co. Ltd. which was formed immediately after the enabling act of 1876. Previously, Australian cities were served by an ad hoc system of horse-drawn 'omnibus' services; however, the vast majority of the population walked. The introduction of regular horse tram services had an almost immediate impact on the shape and character of the cities, among which Adelaide took pride of place as the pioneer.

The tram network helped build up the population in a 'commuter belt' of suburbs, with an almost immediate effect on North Adelaide which experienced a pronounced building boom partly as a result. At the same time, as all lines terminated in the city, its commercial dominance was reinforced.



(CD Ref 1724/52)

## Heritage of the City of Adelaide

---

The Adelaide and Suburban Tramways Act, 1876, permitted horse trams to operate in the city and suburbs. Initially, the principal routes were from Rundle Street to Kensington, and from North Terrace to Barton Terrace, North Adelaide. The first line, to Kensington, was opened on 10 June 1878. The North Adelaide line was taken in hand immediately and - despite delays caused by disputes with the Council over works and the sharing of Costs - the first tram ran on 10 December 1878.

The Adelaide and Suburban Tramways Co. built the horse tram depot (tram sheds and stables) off O'Connell Street also in 1878. It was designed by the company's engineer Edmund Wright. The line to North Adelaide was opened by the governor who brought with him the visiting English cricket team. Together with the tramway company staff, they all sat down to luncheon in the new tram shed after their inaugural journey from the city.



Interior now Demolished (CD Ref 1724/51)

The first office for the company was next to the terminus at the Caledonian Hotel. In late 1882 a new office (the present building) was built adjacent to the depot next to the lane leading to the car sheds.

The depot and office continued in use until 1908 when the company was taken over and the lines electrified by the Municipal Tramways Trust which took over from all the horse tram companies operating in the metropolitan area. The North Adelaide depot was sold to the Golden Crust Bakery which was bought by Tip Top Bakery in the late 1940s. The working horses were kept in the old stables through the 1960s until they were finally replaced by vans.

ACA, Assessments, *Digest of Proceedings*, 1882, Smith Survey; Brimson, S., *The tramways of Australia*, 1983, p. 16, *Critic, the tramways of Adelaide, past, present and future*, 1909; Kingsborough, L.S., *The horse tramways of Adelaide and its suburbs*, 1967, p. 6; MLSA, Historical photographs (Town Acre 909);

Nagel, P., *North Adelaide 1837-1901*, 1971, p. 50; *South Australian Register*, 23 March 1878, 10 April 1878.

The text in this Information Sheet was copied from the **Heritage of the City of Adelaide: An Illustrated Guide**, (1996). The photographs contained in this Information Sheet are a selection of those held by Heritage Services, in digital format.

The property described in this Information Sheet is included in the Register of State Heritage places. A heritage listing does not mean or imply right of access by the public to such properties.

## Heritage of the City of Adelaide

---

*The heritage related Principles of Development Control as well as the Precinct specific objectives and Principles of Development Control are contained in the Adelaide (City) Development Plan. These should be referred to in whole when contemplating any development.*

*Further information on the Heritage Incentives Scheme, an initiative of Council to sponsor timely and appropriate conservation action is available upon request of the Customer Service Centre.*

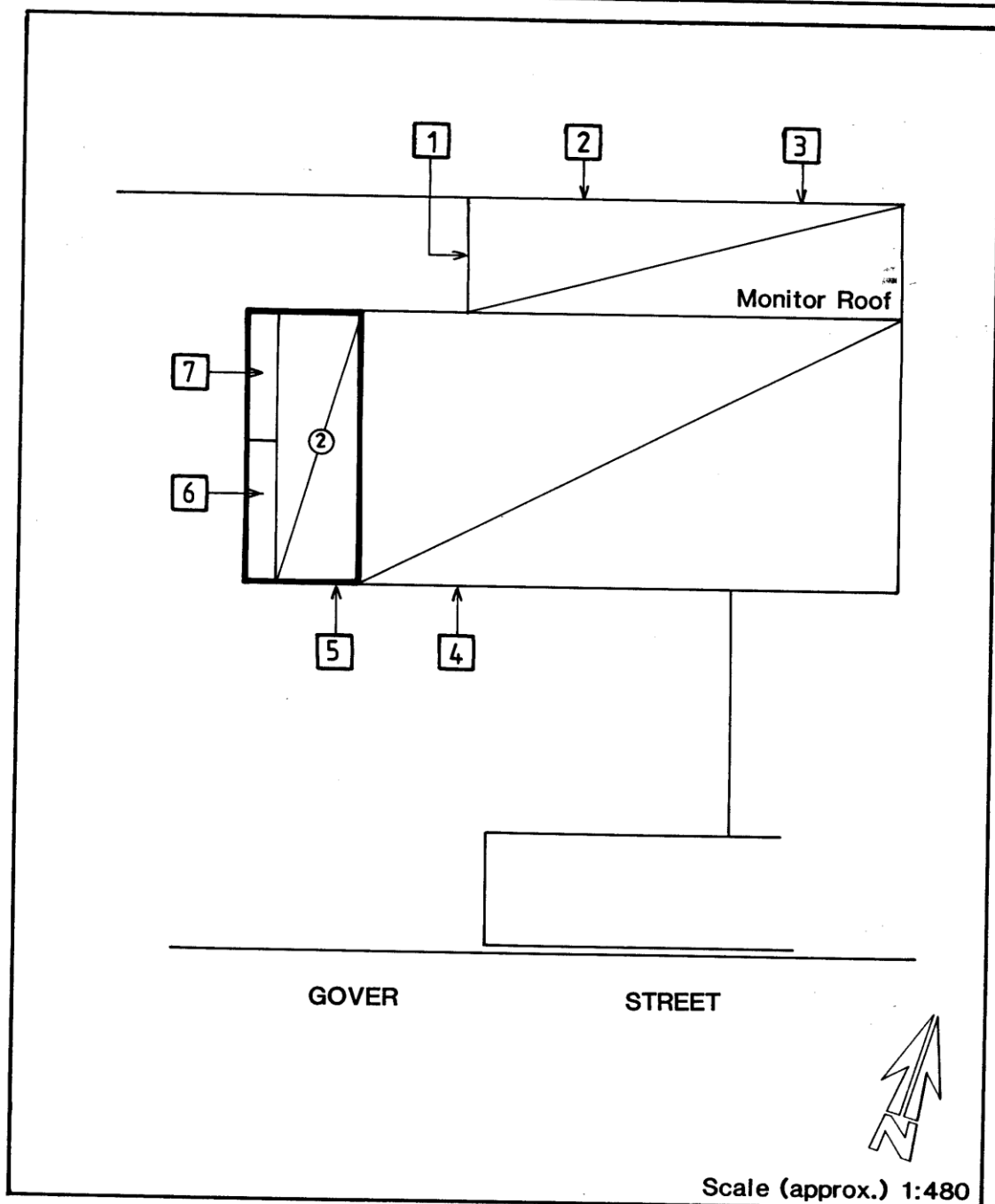


# CITY OF ADELAIDE HERITAGE STUDY

## The City Heritage Register-Definition of Items

Prepared by the Dept. of Planning and Development

Item	FORMER HORSE TRAM DEPOT ADMINISTRATION OFFICES	Building No 32/0117-2
Address	Rear 80 Gover Street, North Adelaide (On part of land at 62-80 Gover Street)	CT 4123/420



***Image scanned - not to stated scale.***

This Curtilage Map has been prepared as a guide only and no warranty or assurance is given about the accuracy of the content as it may contain obsolete information. The Corporation excludes all liability [including for negligence] in relation to your use of these documents.



## CITY OF ADELAIDE HERITAGE STUDY

### The City Heritage Register-Definition of Items

Prepared by the Dept. of Planning and Development

Item	FORMER HORSE TRAM DEPOT ADMINISTRATION OFFICES	Building NO 32/0117-2
Address	Rear 80 Gover Street, North Adelaide (On part of land at 62-80 Gover Street)	CT 4123/420

#### NOTES:

1. This elevation and associated entrance are intimately linked with the function of this complex.  
They mark the point of departure of Horse Trams to O'Connell Street via the facing lane.
2. Brick parapet above bluestone rubble wall.
3. 1880 boundary.
4. Recent unsympathetic entrance.
5. Bluestone rubble with brick quoins.
6. Verandah.
7. Verandah partially infilled.