

City of Adelaide Heritage Survey (2008)

NAME: *Edinburgh Castle Hotel, 233-239 Currie Street* **ZONE/POLICY AREA:** MU - PA19

APPROVED / CURRENT USE: Hotel w/out Accommodation
FORMER USE: Hotel
DATE(S) OF CONSTRUCTION: 1878-1879

LOCATION: 233-239 Currie Street
ADELAIDE SA 5000
LOCAL GOVERNMENT AREA: Adelaide City Council
LAND DESCRIPTION: CT-5389/438

HERITAGE STATUS: Local Heritage Place
OTHER ASSESSMENTS McDougall & Vines, 1993



Edinburgh Castle Hotel – View to the southwest

NAME: *Edinburgh Castle Hotel, 233-239 Currie Street* **ZONE/POLICY AREA:** *MU - PA19*

DESCRIPTION:

A two-storeyed hotel on a corner site has bluestone walls with rendered and painted brick quoins to window and door surrounds. There are brick chimneys with decorative tops. There is a ground floor verandah and first floor balcony and verandah to the Currie Street elevation. Verandah posts are of timber, balustrading to the first floor balcony is of timber. There are pressed metal panels under front verandah that look to be new and are pop riveted. Street corner door to bar has green terrazzo step (as has front door). The cellar opening is on the east end. Windows and doors are timber framed, with the windows of double-hung sash. There are decorative paired timber brackets under slatted roof eaves.

There are colour leaded windows to the Penfolds St Henri Claret Room; the Kaiser Stuhl Green Ribbon Rhine Riesling Parlour (two western windows onto Currie St with iron guards); above Currie St door are floral and leaf leaded panels, and in the door's side panes (protected by perspex); there is a remnant door bell. Later addition to the west of bluestone and brick with cement base has three lead pane windows: Minchinbury Champagne Dining Room; Kaiser Stuhl Rosé (with a Barossa Valley rural scene in black and brown in the central oval pane); and Penfolds Club Port Dining Room. The side door glass panel has Edinburgh Hotel lettered and a lion rampant to the right within a shield escutcheon

This assessment includes the form of the original hotel under the hipped roof, the face bluestone and decorative detailing to the northern, eastern and western elevations, the verandahs and balcony and the leadlight detailing.

The assessment does not include the stone additions to the western elevation, additions to the southern elevation, and has not included the interior.

STATEMENT OF HERITAGE VALUE:

The building is of heritage value because of its architectural detailing, its, largely original appearance and the manner in which it reflects the changing social life of this once residential area. It illustrates several key themes in the city's history: *2.5 City Dwellers: City, state and business leaders; 3.1.1 Early Development Patterns; 3.5.1 A City of Pubs; 3.7 Working Men and Women; 4.3 Development of the Building Industry, Architecture and Construction; 4.4.2 Other Forms of Accommodation; 4.5.2 Victorian commercial (1870s to 1890s); 6.2.3 Hotels, Bars and Wineshops.*

RELEVANT CRITERIA (Under Section 23(4) of the *Development Act 1993*):

The building is recommended for Local Heritage listing because it satisfies the following criteria:

- (a) it displays historical, economical or social themes that are of importance to the local area, being one of several hotels in the western part of the city that once served a working-class population and the site of the first publican's licence issued in South Australia; and

- (e) it is associated with notable local personalities, namely, architects Rowland Rees and F. Kenneth Milne & Evans, who designed the existing balcony-verandah in late 1926 for the SA Brewery Co; and
 - (f) it is a notable landmark in the area, prominently sited on the corner of Currie and Gray Streets.
-

ELEMENTS OF HERITAGE VALUE:

Inclusions

- External form and scale of the building, including exterior walls and roof;
- Fabric and detailing of the northern and eastern façades, with the verandahs and balcony to Currie Street.

Exclusions

- Interior detailing
- New services
- Modern signs

[NOTE: The Description of Place and Elements of Heritage Value listed in the Adelaide \(City\) Development Plan for this property are as follows:](#)

[Hotel \(Edinburgh Castle\); external form of two storey building, in particular the fabric and detailing of façade and detailing of the street facades and verandah balcony. Excludes incongruous later additions.](#)

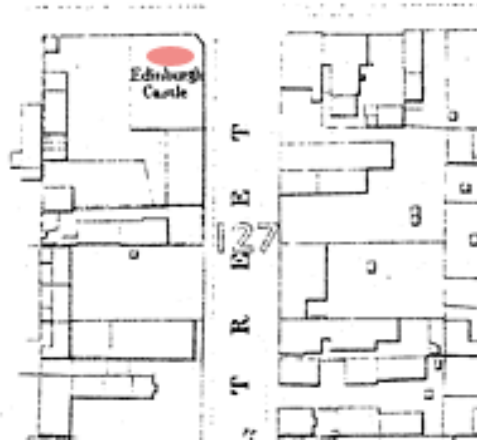
[This is the legally recognised listing and should be used for the purposes of development applicant assessment.](#)

BRIEF HISTORICAL BACKGROUND:

According to Bob Hoad, the hotel was originally known as Guthrie's Hotel and on 31 May 1837 was the site of the first publican's licence issued in South Australia. Guthrie's Hotel became known as the Edinburgh Castle Inn from 6 April 1839 and the Edinburgh Castle Hotel from 26 July 1881.

The hotel retains the distinction of being the oldest continually licensed hotel in South Australia.

The present form of the building dates from 1878–1879 when tenders were called by architect CE Rowland Rees for the re-building of the hotel in June 1878. The hotel is indicated on the Smith Survey of 1880.



B.3733, August 1926 (SLSA)

In December 1926, W Essery & Son, Norwood, were engaged to erect the verandah and balcony to the hotel. Architects were F Kenneth Milne & Evans.

The hotel has continued to be remodelled in accordance with social changes that have been reflected in licensing regulations.

REFERENCES:

Adelaide City Council, Correspondence dated 27.2.1992 from Colliers Jardine and 29.10.1992 from Hassell Planning Consultants, Adelaide City Archives.

Hoad, JL (Bob), *Hotels and Publicans in South Australia, 1836–March 1993*, Second Edition (revised), McLaren Vale, 1999, pp. 148–149.

Jensen, Elfrida & Rolf, *Colonial Architecture in South Australia: A Definitive Chronicle of Development 1836–1890 and the Social History of the Times*, Rigby, Adelaide, 1980, p. 600.

McDougall & Vines, *City of Adelaide, Townscape Context and Local Heritage Assessment*, Adelaide, 1993.

Smith Survey, 1880, Sheet No. 66, Adelaide City Archives.

State Library of South Australia, Library Database (Photographs): B.3733, August 1926.

The Builder: Journal of the Building Industry of South Australia, Adelaide, Vol. 7, No. 48, 15.12.1926, p. 19.