

## BOTANIC HOTEL AND CHAMBERS

301-309 North Terrace



(CD Ref 3964/83)

dressings being more prominent than at present. The form of the three storey hotel with chamfered corner and the later balconies is typical of the Adelaide 'pub', the building being one of the most developed and elaborate versions of this constructional idiom to have been erected. The complex was designed by Michael McMullen architect (associated with the design of numerous Roman Catholic buildings) and built by J. Barry in 1876-77 for Richard Vaughan. Vaughan's obituary in *Frearson's*



(CD Ref 2016/40)



(CD Ref 3964/86)

Kensington Hotel . . .all the result of his perseverance and energy'.

Vaughan leased back for a term of thirty years the corner half acre on which the Botanic Terrace development took place.

*Monthly Illustrated Adelaide News* of May 1884 gives an indication of his substantial contribution to the built form of Adelaide. Vaughan in 1862 began to establish the nearby East End Market for selling general produce. Subsequent to his sale of the market property in 1873 it was estimated that Vaughan spent £80 000 in the erection of the 'Botanic Terrace, Adelaide, the temperance Hotel and villas at Hackney and the

## Heritage of the City of Adelaide

---

A lengthy description in the *South Australian Register* of 13 August 1877 described the complex as:

*. . . a large family hotel, three shops, and seven dwelling houses, which when completed will together form one of the handsomest Terraces in Adelaide . . . The buildings are uniform in style and both substantial and rich in appearance.*

Each of the houses had twelve ' . . . fine large rooms, including bathroom and is fitted up with every convenience'. The houses were all similar in design and dimensions, each with one bay window on the ground floor. 'The seven balconies add to the beauty of the houses generally, and each one is entirely select and apart from the others. A splendid view of the country is to be had from them'. The buildings were constructed of Glen Osmond stone, the fronts being worked up with cement dressings. 'Rustic pilasters' separated the houses, and the mouldings and cement dressings in various classic forms gave the terrace 'a rich and elegant appearance'. The hotel was precisely similar in style, with an additional storey and a roof surrounded by cement balustrades. There were twenty-five rooms.

The Botanic Hotel was granted a liquor licence in 1883 and renovated at a cost of £1200 to designs by architects Wright and Reed. In 1897 the present tiered balconies were erected, the building then reaching its present basic external form. In 1910 the hotel was again altered (mainly internally) to designs by the architect Claude Lindsay. Further renovations took place in the 1920s for the new owners the South Australian Brewing Company.



(CD Ref 3971/32)

The whole complex has again been renovated recently. Externally the buildings are in poor condition, but form a notable backdrop to the Adelaide Botanic Gardens. The complex also occupies one of the most prominent corner positions in the city and acts as an admirable 'book-end' to the streetscape of North Terrace.

*Frearson's Monthly Illustrated Adelaide News*, May 1884; *Illustrated Adelaide News*, March 1879; MLSA Historical photographs (Town Acre 31); *South Australian Register*, 13 August 1877, 6 October 1877.

## Heritage of the City of Adelaide

---

The text in this Information Sheet was copied from the **Heritage of the City of Adelaide: An Illustrated Guide**, (1996). The photographs contained in this Information Sheet are a selection of those held by Heritage Services, in digital format.

The property described in this Information Sheet is included in the Register of State Heritage places. A heritage listing does not mean or imply right of access by the public to such properties.

*The heritage related Principles of Development Control as well as the Precinct specific objectives and Principles of Development Control are contained in the Adelaide (City) Development Plan. These should be referred to in whole when contemplating any development.*

*Further information on the Heritage Incentives Scheme, an initiative of Council to sponsor timely and appropriate conservation action is available upon request of the Customer Service Centre.*

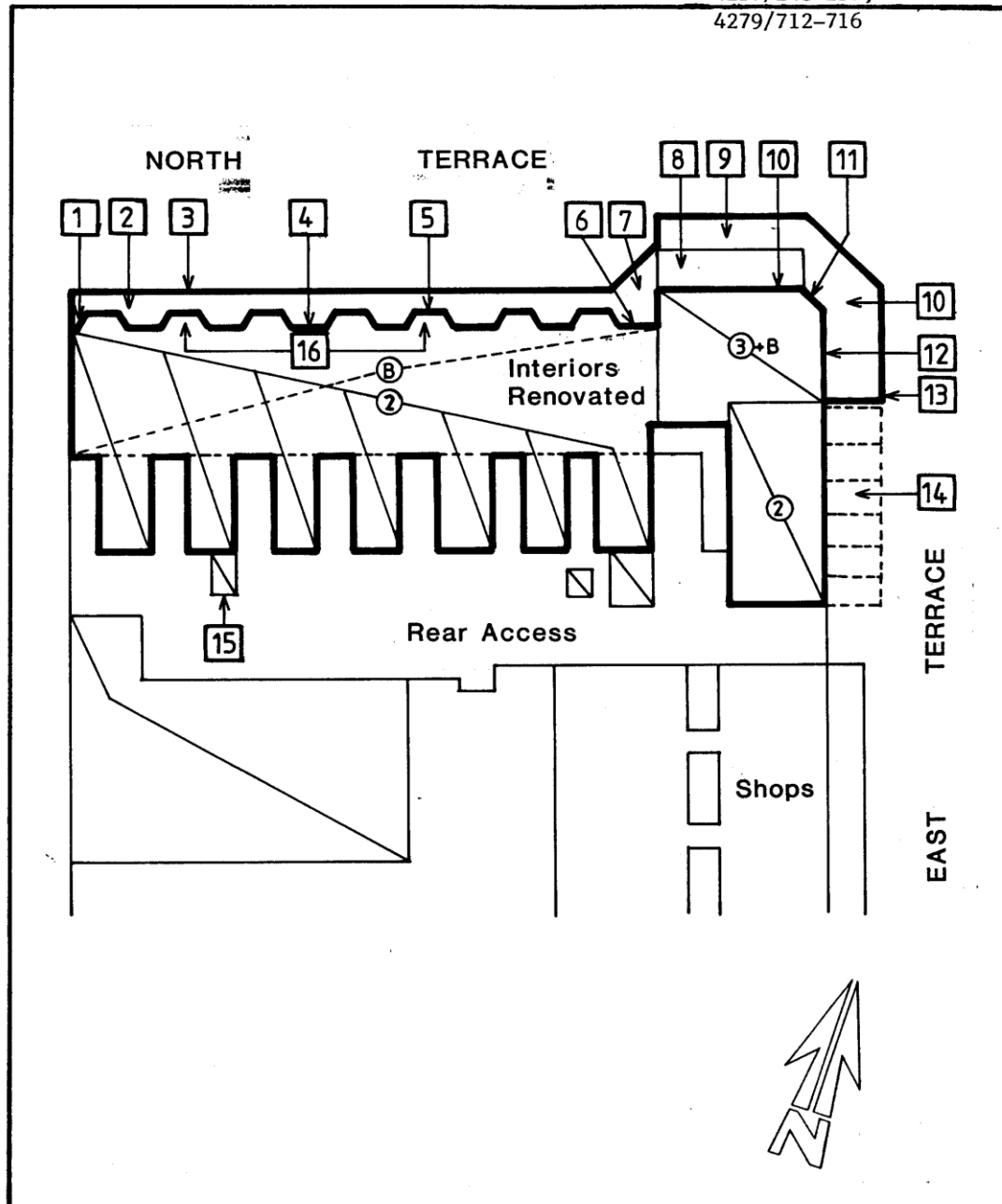


## CITY OF ADELAIDE HERITAGE STUDY

### The City Heritage Register-Definition of Items

Prepared by the Dept. of Planning and Development

Item	BOTANIC HOTEL AND CHAMBERS		Building No
			4/0206
Address	301-310 North Terrace, 1-4 East Terrace	CTs 4182/463, 4182/466-467, 4254/292-296, 4257/248-257, 4279/712-716	



***Image scanned - not to stated scale.***

This Curtilage Map has been prepared as a guide only and no warranty or assurance is given about the accuracy of the content as it may contain obsolete information. The Corporation excludes all liability [including for negligence] in relation to your use of these documents.



## CITY OF ADELAIDE HERITAGE STUDY

### The City Heritage Register-Definition of Items

Prepared by the Dept. of Planning and Development

Item	BOTANIC HOTEL AND CHAMBERS	Building No 4/0206
Address	301-310 North Terrace, 1-4 East Terrace	CTs 4182/463, 4182/466-467, 4254/292-296, 4257/248-257, 4279/712-716

#### NOTES:

1. Rusticated quoins.
2. Note Basement reveal.
3. Rendered wall and cast iron fence.
4. Bluestone rubble with extensive stucco enrichment.
5. Note Hood moulds to windows and vermiculated keystones.
6. Doorway enclosed.
7. Verandah extension.
8. Three storey verandah.
9. Two storey verandah.
10. Note Brackets, pilasters with floral capitals.
11. Note Windows with turned timber frames.
12. Balustraded parapet.
13. Cast iron balustrading frieze and spandrels.
14. New pergola.
15. Out house and store.
16. Bay windows (typ).