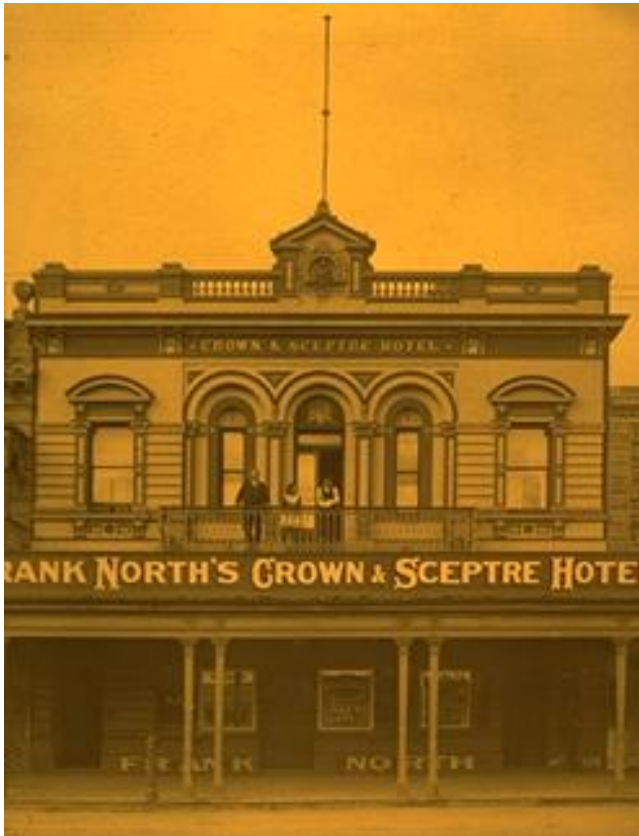


## CROWN AND SCEPTRE HOTEL

308-310 King William Street

The first hotel of this name was converted in 1868 from a coach builder's showroom belonging to Hubble Brothers, founded in 1854. In 1877 a totally new development was designed by architects Woods and McMinn.



(CD Ref 1606/9)

Alfred Hubble's new hotel was opened later that year. This was described in the *South Australian Register*, 6 October 1877 as having been built on the adjoining allotment to the south of the original hotel in King William Street. Economy of space was successfully achieved by the architects as the land had a frontage to King William Street of only 40 feet. The hotel, however, was larger than might be expected with two storeys and extending 100 feet backward from the street. To make the best use of the limited space, bricks were used instead of stone. 'The front elevation has a very neat and effective appearance. It is dressed with cement, and ornated in the Italian style of architecture, some of the cornices being very pretty in design'. A large veranda spanned the footpath and extended the length of the building. Above it was a balcony with handsome iron railings. At the top was a pediment surrounding the 'device' of the hotel: The

Crown and Sceptre. The interior presented the most 'uncommon features'. There were twenty-five rooms, including thirteen bedrooms. On the front ground floor was a large bar, two parlours and a landlord's office. Behind the bar was a wide passage with a serving window for the sale of liquor directly on to the street. Still farther behind was a large dining-room, a kitchen and a washhouse. In the basement under the bar were commodious dry cellars, with a tramway extending to the back of the premises for barrels to be received:

*Ventilation, too, has been unusually well provided for, by means of inlets for fresh air fitted in every window board, and by such arrangement of the kitchen store and flues that some of the heat from the fire there facilitates the exit of vitiated atmosphere from all the rooms in the house.*

The hotel was also supplied throughout with a patent pneumatic bell. Behind the premises were stables, coachhouses, and other outhouses. A.G. Chapman was the contractor for the building, at a cost of about £4500. The newspaper added a few months later that the new

## Heritage of the City of Adelaide

---

hotel was ' . . . one of the finest houses of entertainment in Adelaide and a decided ornament to the street'.

The partnership of architects Edward John Woods and William McMinn commenced in 1875. McMinn has been described as ' . . . one of the earliest practitioners of note to have been trained in South Australia'. He was articled to James MacGeorge about 1860, then enlisted as a surveyor in Boyle Travers Finniss' exploring expedition of 1864, an unsuccessful attempt to settle the Northern Territory. He worked as assistant to colonial architect, Robert George Thomas, then in private practice with Daniel Garlick in 1869. He became overseer of public works in 1870 and came into contact with Woods, who, despite his government position as architect to the Council of Education, had also the right of private practice. Woods was appointed architect-in-chief in January 1878 and McMinn kept the firm of Woods and McMinn going until his premature death in 1884.

Architecturally this building is not typical of the characteristic form of hotels in Adelaide because of its position, and the use of arched forms, together with the interpretation of capitals and pilasters. The composition of the Crown and Sceptre Hotel is tightly contained, rusticated wings' bounding the central arcaded section.

The detailing, including the small pediment with its novel Crown and Sceptre, are all in original and very crisp condition. The building is important for its composition which is robustly handled in so small a facade. Unfortunately the integrity of the ground floor has been marred by its present cladding, the removal of the original



(CD Ref 1606/56)

veranda and its replacement by a bulky cantilevered veranda. Several outbuildings associated with the hotel have survived in the yard at the rear across Kent Street.

The hotel is a complementary element in this section of King William Street and is particularly well supported by the adjoining building to the north.

ACA, Assessments, Smith Survey 1880; Burgess, H.T., *Cyclopedia of South Australia*, Vol. 1, 1909, p. 538; *Chronicle*, 13 June 1868; Jensen, E., & R., *Colonial architecture in South Australia*, 1980, pp. 363, 606; MLSA, Historical photographs (Town Acre 452); Morgan, E.J.R., & Gilbert, S.H., *Early Adelaide architecture 1836 to 1886*, 1969, p. 69; *Observer*, 11 April 1903; Page, M., *Sculptors in space*, 1986, p. 74; *South Australian Register*, 6 October 1877, 23 March 1878.

## Heritage of the City of Adelaide

---

The text in this Information Sheet was copied from the **Heritage of the City of Adelaide: *An Illustrated Guide***, (1996). The photographs contained in this Information Sheet are a selection of those held by Heritage Services, in digital format.

The property described in this Information Sheet is included in the Register of State Heritage places. A heritage listing does not mean or imply right of access by the public to such properties.

*The heritage related Principles of Development Control as well as the Precinct specific objectives and Principles of Development Control are contained in the Adelaide (City) Development Plan. These should be referred to in whole when contemplating any development.*

*Further information on the Heritage Incentives Scheme, an initiative of Council to sponsor timely and appropriate conservation action is available upon request of the Customer Service Centre.*

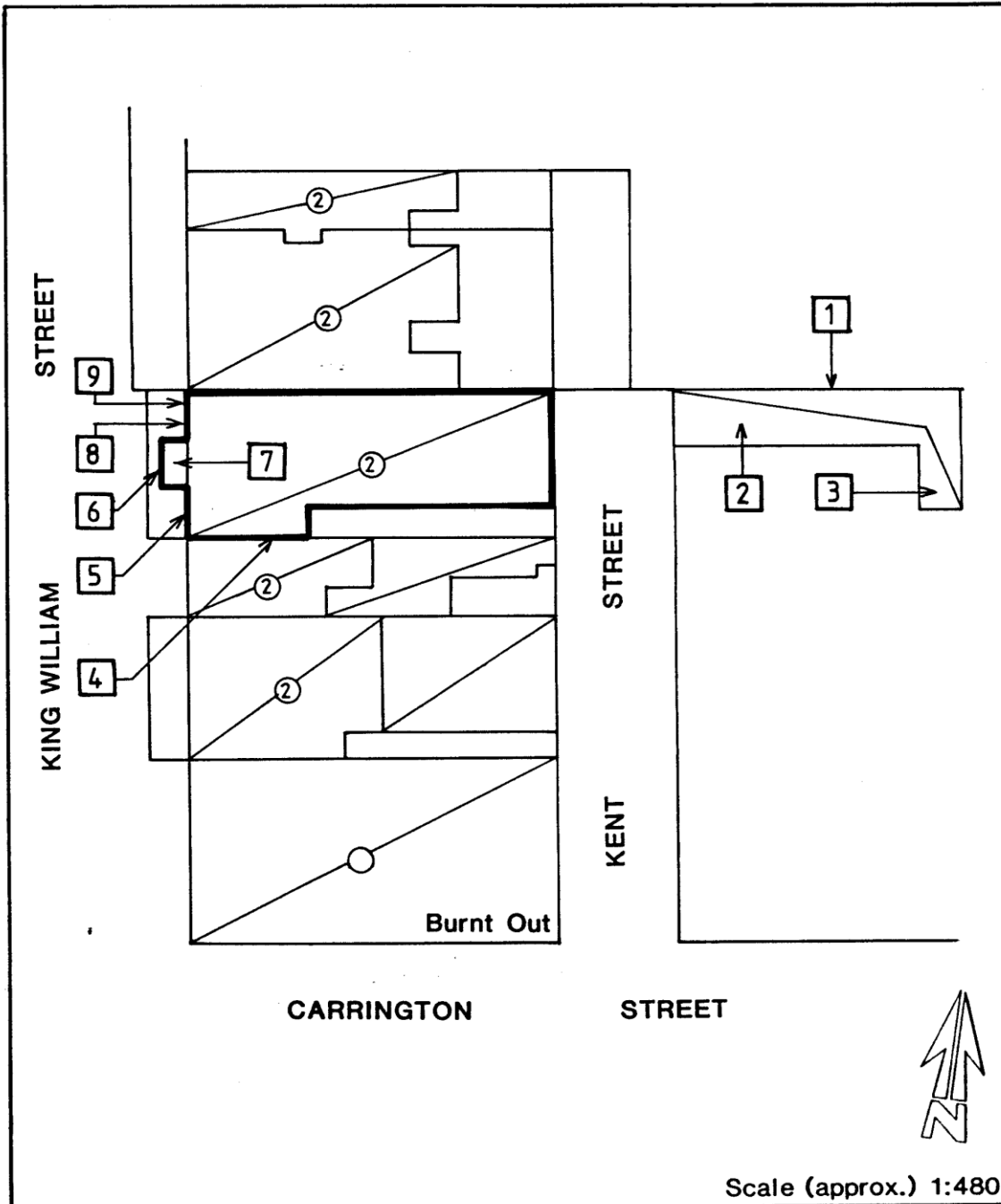


# CITY OF ADELAIDE HERITAGE STUDY

## The City Heritage Register-Definition of Items

Prepared by the Dept. of Planning and Development

Item	CROWN AND SCEPTRE HOTEL	Building No	16/0112
Address	308-310 King William Street; 11-13 and 10-14 Kent Street		CT 3380/198*



***Image scanned - not to stated scale.***

This Curtilage Map has been prepared as a guide only and no warranty or assurance is given about the accuracy of the content as it may contain obsolete information. The Corporation excludes all liability [including for negligence] in relation to your use of these documents.



## CITY OF ADELAIDE HERITAGE STUDY

### The City Heritage Register-Definition of Items

Prepared by the Dept. of Planning and Development

Item	CROWN AND SCEPTRE HOTEL	Building No 16/0112
Address	308-310 King William Street; 11-13 and 10-14 Kent Street	CT 3380/198 *

#### NOTES:

1. Outbuildings not included.
  2. Brick construction (English bond).
  3. Iron and timber clad stables.
  4. Brick construction (English bond).
  5. Note: Rustication at first floor level.
  6. Unsympathetic awning.
  7. Original balcony with cast iron balustrade.
  8. Rendered facade with stucco enrichment including window mouldings, parapet and pilasters. Fenestration altered at ground floor level.
  9. Note: Balustraded parapet with Crown and Sceptre insignia on pediment.
- \* Conservation site comprises that part of the above CT from the King William Street alignment to the Kent Street alignment.