

EPWORTH BUILDING

31-35 Pirie Street

The Epworth building was built as administrative offices for the Methodist Church during the period of Methodist growth. Between 1920 and 1930 fifty-two churches and forty-nine halls erected.

In 1900 the three branches of the Methodist Church, the Wesleyans, Bible Christians and Primitive Methodists had united for a variety of sensible reasons which included similar ideals and worship practices, as well as for economic efficiency. In effect, Methodist union meant that the Bible Christians and the Primitive Methodists succumbed to the strength of the Wesleyan Church which had twice the numbers, the best buildings and generally a better educated ministry. Wesleyanism was also the central stream of religious life which had flowed from the work of John Wesley, in England. Union saw the merging of bookshops and the consolidation of church funds and properties.

After a period of consolidation the Methodist Union decided to construct an administrative building which was referred to as the Pirie Street Connexional building. This was next to the Pirie Street Methodist Church (since demolished). The new premises were called Epworth Building to commemorate John Wesley's birthplace in the county of Lincolnshire, England. The name is perpetuated in many Methodist institutions, notably the Epworth Publishing House in London.

The office building was designed by the architects English & Soward and constructed on the site of the former Pirie Street manse. C.H. Martin was the builder. Constructed of reinforced concrete with brick infill, the consulting engineer was H.G. Jenkinson. Reverend William Robinson was one of the principal advocates of the erection of the Epworth building. He was appointed the church's first full-time connexional secretary in 1926. One of the original tenants was the Methodist Book Depot which before 1900 was three separate book depots representing the three denominations. In 1929 the name changed to the Epworth Book Depot which still occupies part of the building.

This 'impressive pile' is of architectural importance due to composition of its facade and the unusual use of elements which are derived from the Gothic style. The design of the facade features lancet windows in groups of three sets symmetrically about a central gabled panel which stands proud on the face of the building. Gothic derived moulds, capitals and cornices help to make this a strong and disciplined element of Pirie Street. The scale of the building relates to the adjacent Colonel Light Centre and makes a positive contribution to the streetscape. The strongly-detailed facade, also provides visual diversity to Pirie Street.

ACA, BSO, index. Plan 34, 1925: *Builder*, 19 November 1924; Hunt, A., *This side of heaven*, 1986, pp. 210, 218, 220, 224, 228, 303, 304; MLSA, Historical photographs (Town Acre 204).

The text in this Information Sheet was copied from the **Heritage of the City of Adelaide: An Illustrated Guide**, (1996). The photographs contained in this

Heritage of the City of Adelaide

Information Sheet are a selection of those held by Heritage Services, in digital format.

The property described in this Information Sheet is a place of Local Heritage (City Significance). A heritage listing does not mean or imply right of access by the public to such properties.

The heritage related Principles of Development Control as well as the Precinct specific objectives and Principles of Development Control are contained in the Adelaide (City) Development Plan. These should be referred to in whole when contemplating any development.

Further information on the Heritage Incentives Scheme, an initiative of Council to sponsor timely and appropriate conservation action is available upon request of the Customer Service Centre.



CITY OF ADELAIDE HERITAGE STUDY

The City Heritage Register-Definition of Items

Prepared by the Dept. of Planning and Development

Item	EPWORTH BUILDING	Building No 7/2003
Address	31-35 Pirie Street	CT 3752/40

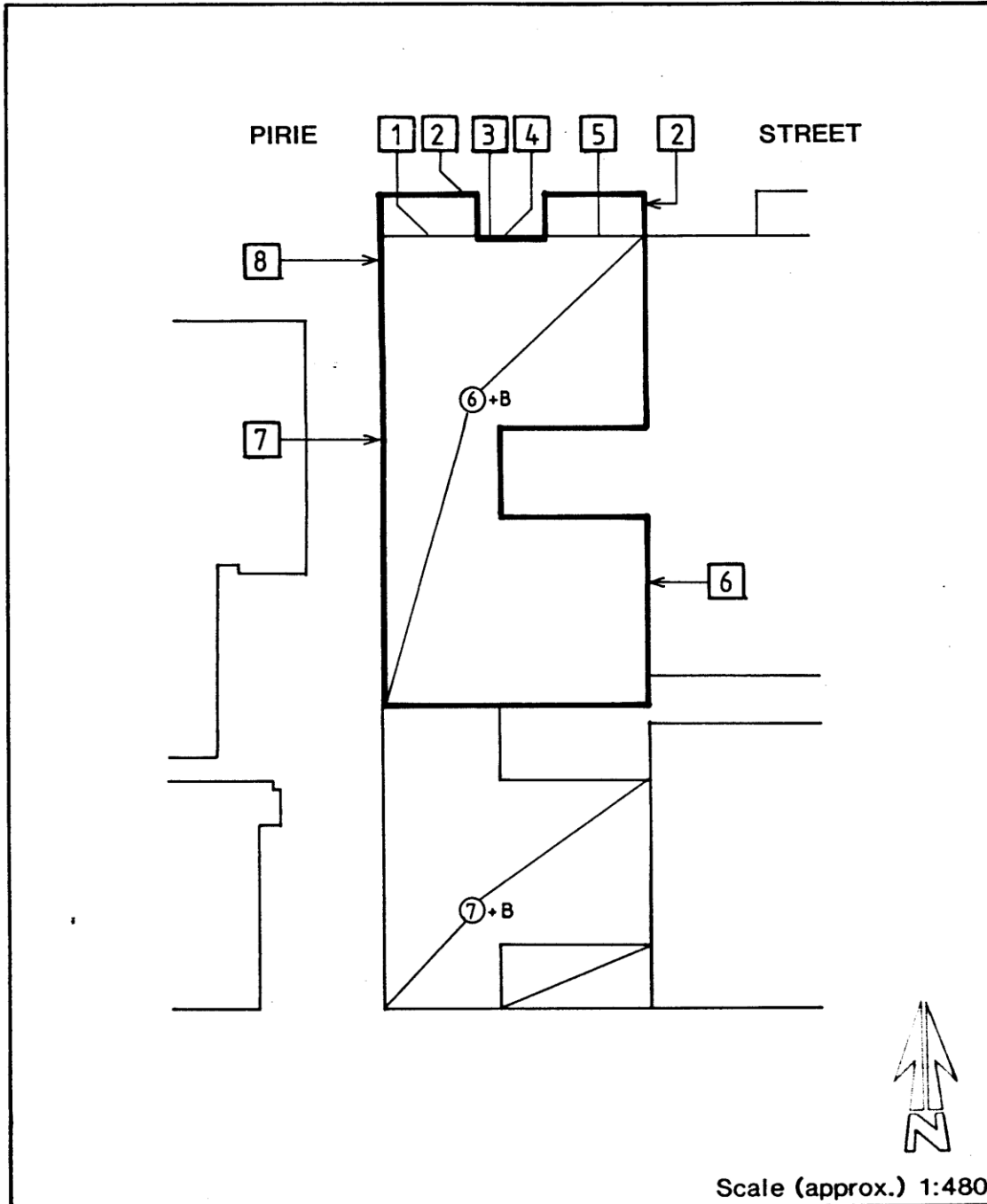


Image scanned - not to stated scale.

This Curtilage Map has been prepared as a guide only and no warranty or assurance is given about the accuracy of the content as it may contain obsolete information. The Corporation excludes all liability [including for negligence] in relation to your use of these documents.



CITY OF ADELAIDE HERITAGE STUDY

The City Heritage Register-Definition of Items

Prepared by the Dept. of Planning and Development

Item	EPWORTH BUILDING	Building No
Address	31-35 Pirie Street	7/2003
		CT 3752/40

NOTES:

1. Altered fenestration at ground floor level.
2. Canopies included.
3. Note Mouldings to main entrance.
4. Note Leadlight above canopy level.
5. Rendered masonry construction with stucco enrichment and lined render.
6. Brick facade.
7. Multi gabled facade.
8. Note Hood moulds and supporting columns around windows.