

HOUSE

378-381 South Terrace

The origins of this house are quite enigmatic. It is difficult to determine not only when it was built but also for whom, and even whether the architect was the one suggested by Morgan and Gilbert in *Early Adelaide architecture*. The design of this building, in common with a number of others, has been confidently attributed to the architect George Kingston simply because the porches appear to be similar to some designed by him. Such design elements were common enough, however, and could have been taken from any of a great range of architectural pattern books of the nineteenth century. (For example, similar designs appear in Loudon's *Encyclopaedia of cottage farm and villa architecture*, 1839.) Yet there is no evidence to suggest the hand of another architect in this house.

Morgan and Gilbert state that it was built in 1857 for Edward Wright, junior. This is possible, but Wright's amalgamation of Town Acres 660, 661, 662 and 663, their subsequent subdivision, and inconsistencies in the City Council Rate Assessment descriptions, confuse the situation to such an extent that it is virtually impossible to establish a precise date of erection for this building. However, the present form of the building was almost certainly complete by the time of sale by George Morphet to William Bartley in 1872.

The rate book for 1857, actually surveyed in late 1856, is considered one of the most accurate of the 1850s surveys and indicates a new or altered house on the site, and so probably at least, part of the house dates from 1856. This date is also indicated by the use of slate roof cladding and the design of the porch, found in other houses of the 1850s.

Despite the 'ifs and buts' in its historical documentation, the house remains significant as an example of residential development in the city. It appears to be in original order, and is noted for its crisp if austere detailing. It remains an excellent record of construction of the mid-nineteenth century and reinforces the residential character of the south-east corner.

ACA, Assessments, Smith Survey 1880; Morgan, E.J.R., & Gilbert, S.H., *Early Adelaide architecture 1836 to 1886*, 1969, p. 78; South Australian Directories, 1849-1863.

The text in this Information Sheet was copied from the **Heritage of the City of Adelaide: An Illustrated Guide**, (1996). The photographs contained in this Information Sheet are a selection of those held by Heritage Services, in digital format.

The property described in this Information Sheet is included in the Register of State Heritage places. A heritage listing does not mean or imply right of access by the public to such properties.

The heritage related Principles of Development Control as well as the Precinct specific objectives and Principles of Development Control are contained in the Adelaide (City) Development Plan. These should be referred to in whole when contemplating any development.

Heritage of the City of Adelaide

Further information on the Heritage Incentives Scheme, an initiative of Council to sponsor timely and appropriate conservation action is available upon request of the Customer Service Centre.



CITY OF ADELAIDE HERITAGE STUDY

The City Heritage Register - Definition of Items

Prepared by the Dept. of Planning and Development

Item HOUSE

Building No

23/2206

Address 378-381 South Terrace

CT 4078/337

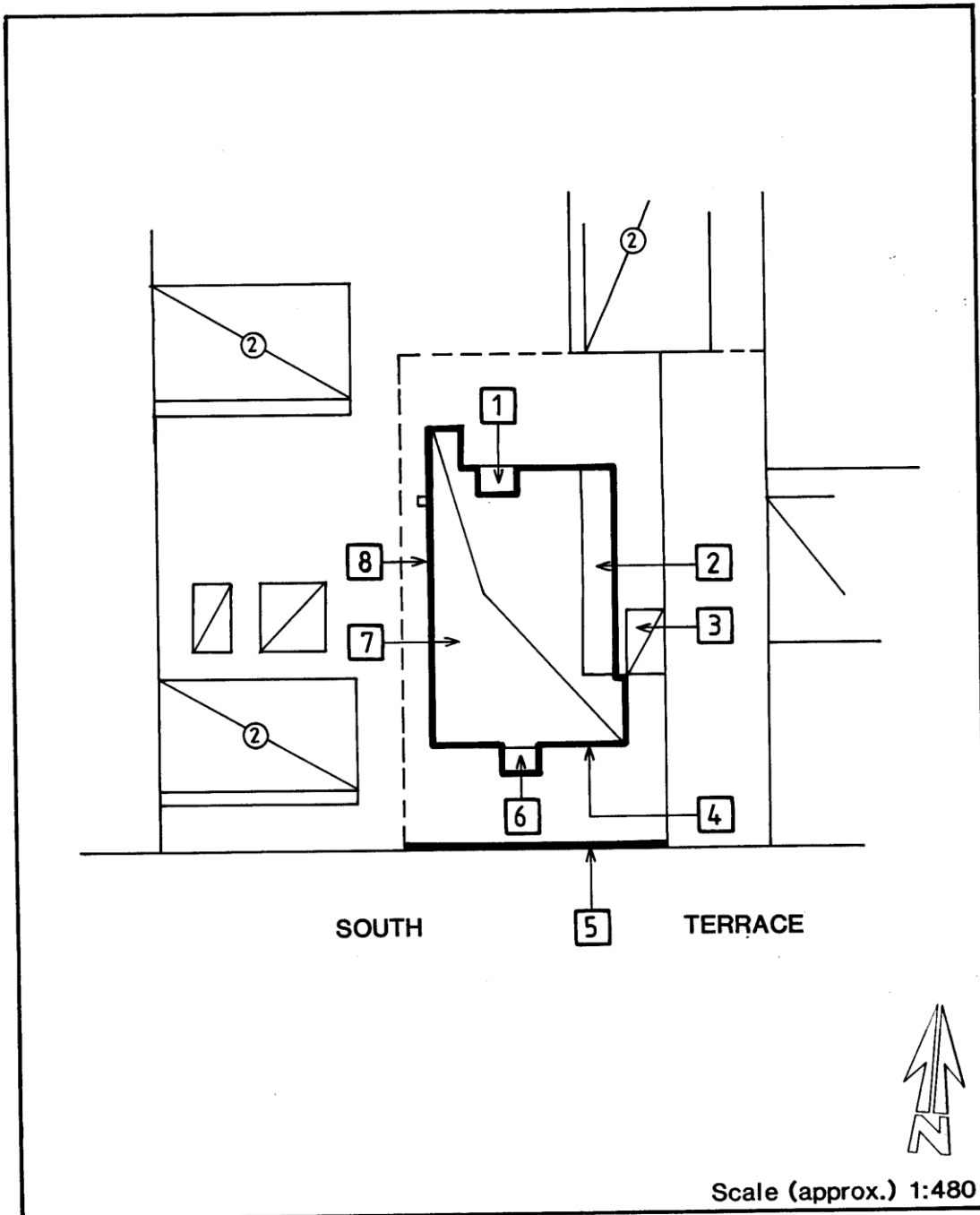


Image scanned - not to stated scale.

This Curtilage Map has been prepared as a guide only and no warranty or assurance is given about the accuracy of the content as it may contain obsolete information. The Corporation excludes all liability [including for negligence] in relation to your use of these documents.



CITY OF ADELAIDE HERITAGE STUDY

The City Heritage Register-Definition of Items

Prepared by the Dept. of Planning and Development

Item HOUSE

Address 378-381 South Terrace

Building No
23/2206

CT 4078/337

NOTES:

1. Timber addition.
2. Verandah.
3. Carport.
4. Coursed random bluestone with stucco enrichment.
5. Bluestone rubble wall and cast iron railings with rendered pillars.
6. Rendered portico.
7. Slate shingle roof.
8. Bluestone rubble with brick quoins.